

OECD Services Trade Restrictiveness Index (STRI)

FINLAND – 2020

Key findings

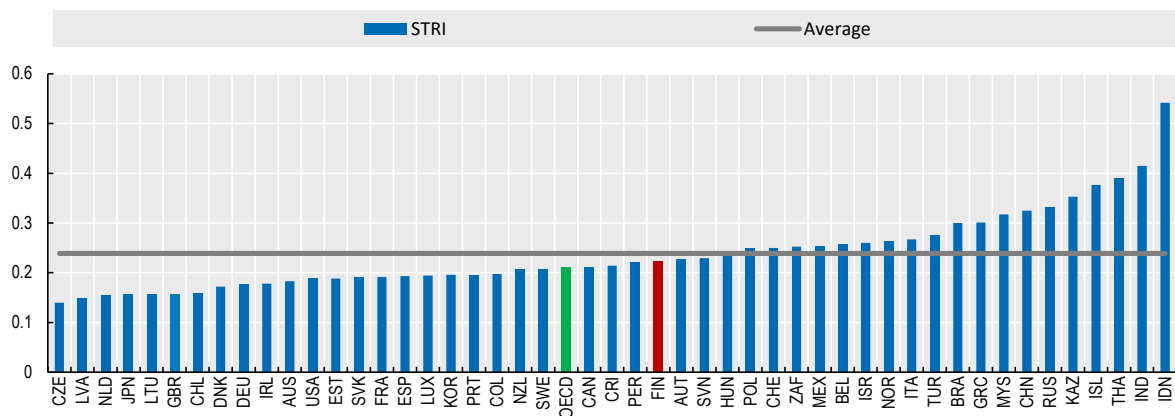
- The 2020 STRI of Finland is slightly above the OECD average, and has increased compared to 2019.
- Legal services is the most open sector in Finland while distribution services is the most restricted.
- Finland introduced new requirements in 2020 on the acquisition of real estate by non-EU/EEA nationals and new conditions on interest rates for consumer credits.

Recommendation

- Innovation and adoption of technology relies on access to knowledge and to the networks, people, goods and services that carry the knowledge around the world. In this context, Finland could benefit from more open markets for services trade.

The 2020 STRI of Finland is slightly above the OECD average and has increased compared to 2019 (Figure 1).

Figure 1. Average STRI across countries, 2020



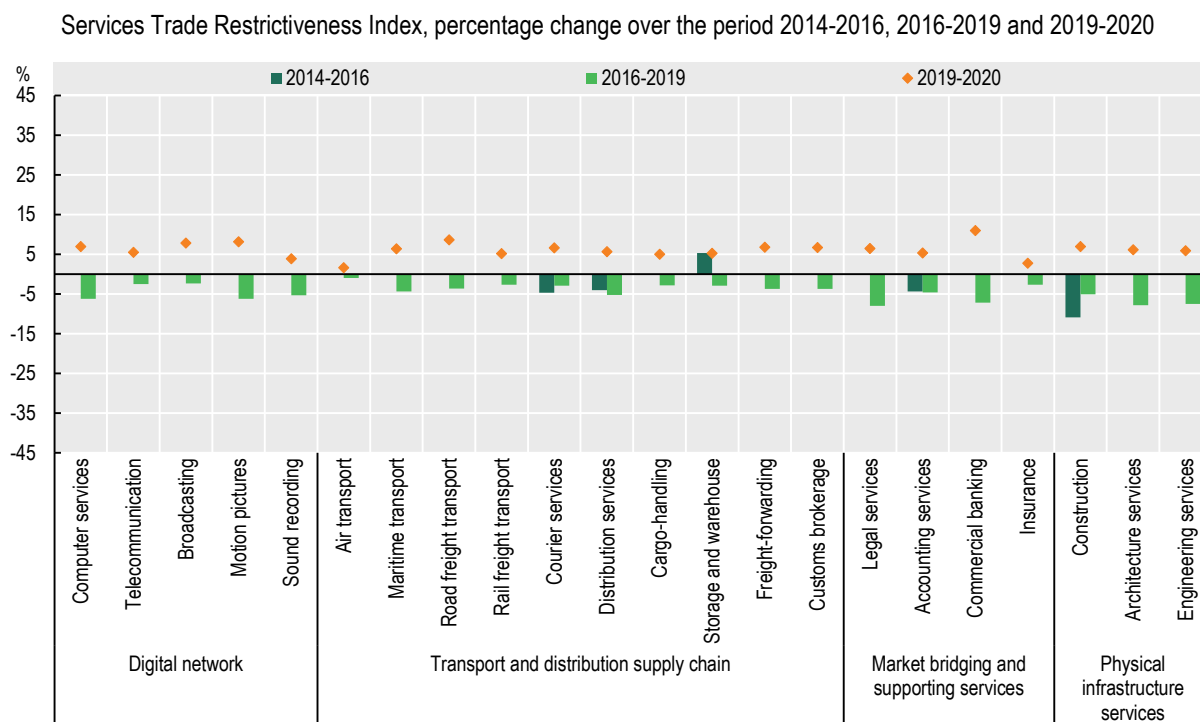
Note: The STRI indices take values between zero and one, one being the most restrictive. The STRI database records measures on a Most Favoured Nations basis. Air transport and road freight cover only commercial establishment (with accompanying movement of people). The indices are based on laws and regulations in force on 31 October 2020. The STRI regulatory database covers the 37 OECD countries, Brazil, China, Costa Rica, India, Indonesia, Kazakhstan, Malaysia, Peru, Russia, South Africa, and Thailand.

Source: OECD STRI and TiVA databases (2020).

Finland applies labour market tests for workers seeking to provide services in the country on a temporary basis as intra-corporate transferees, contractual services suppliers or independent services suppliers. These categories may stay in the country for up to 12 months on their first entry permit. At least one board member and the manager (CEO) in corporations must be residents of Finland or the European Economic Area. Furthermore, rights of access to public procurement are limited to regional trade agreement partners and members of the WTO's Government Procurement Agreement. The standards for cross-border transfer of personal data are set at the EU level. Transfers to non-EEA economies can take place when these ensure an adequate level of data protection or, in the absence of this, appropriate safeguards (e.g., binding corporate rules or standard data protection clauses) are in place. Finally, Finland has a restriction on the establishment of foreign branches and a minimum amount of capital must be deposited in a bank or with a notary in order to register a public limited liability company.

Economy-wide regulatory changes affecting the acquisition of real estate by foreigners contributed to a moderate increase in Finland's STRI across sectors in 2019-2020 (Figure 2). However, in previous years, notably in 2016-2019, moderate reforms are shown across many sectors.

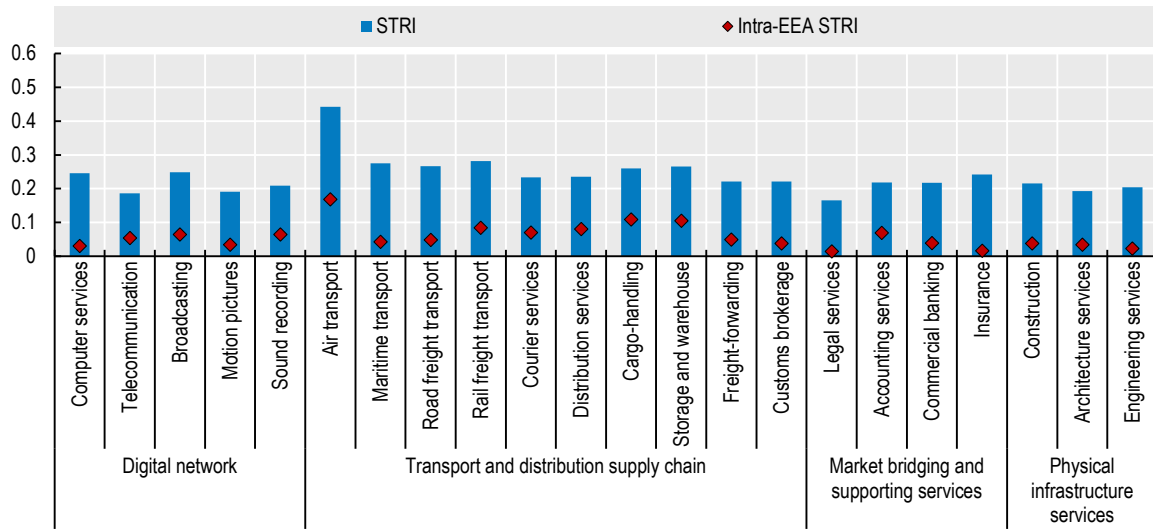
Figure 2. Evolution of STRI scores by sector in Finland



Source: OECD STRI database (2020).

Services trade barriers are significantly lower within the European Economic Area across all services sectors (Figure 2b). Finland maintains an open market for services suppliers from other EU Member States.

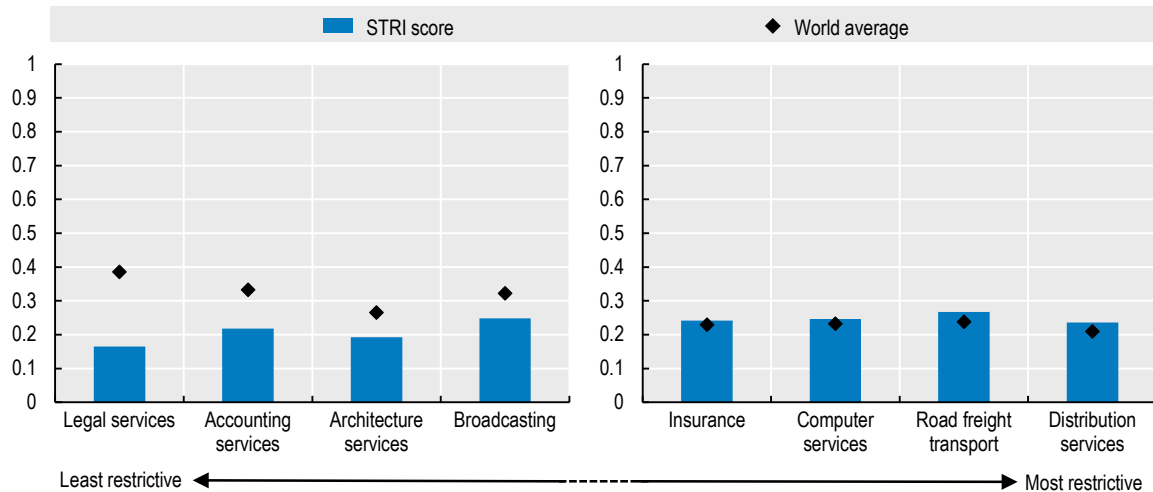
Figure 2b. Regulatory barriers affecting services trade within the European Economic Area (EEA)



Note: The traditional STRI indicates the level of restrictiveness on Most-Favoured Nation basis towards third countries, and the intra-EEA STRI indicates the level of restrictiveness towards EEA members. Intra-EEA STRI covers 24 countries (Austria, Belgium, Czech Republic, Denmark, Estonia, Finland, France, Germany, Greece, Hungary, Ireland, Iceland, Italy, Latvia, Lithuania, Luxembourg, Netherlands, Norway, Poland, Portugal, Slovak Republic, Slovenia, Spain, Sweden).
Source: OECD STRI database (2020).

Legal services, accounting services, architecture services and broadcasting are the sectors with the lowest score relative to the average STRI across all countries (Figure 3). Insurance, computer services, road freight transport, and distribution services are the sectors with the highest score relative to the average STRI across all countries.

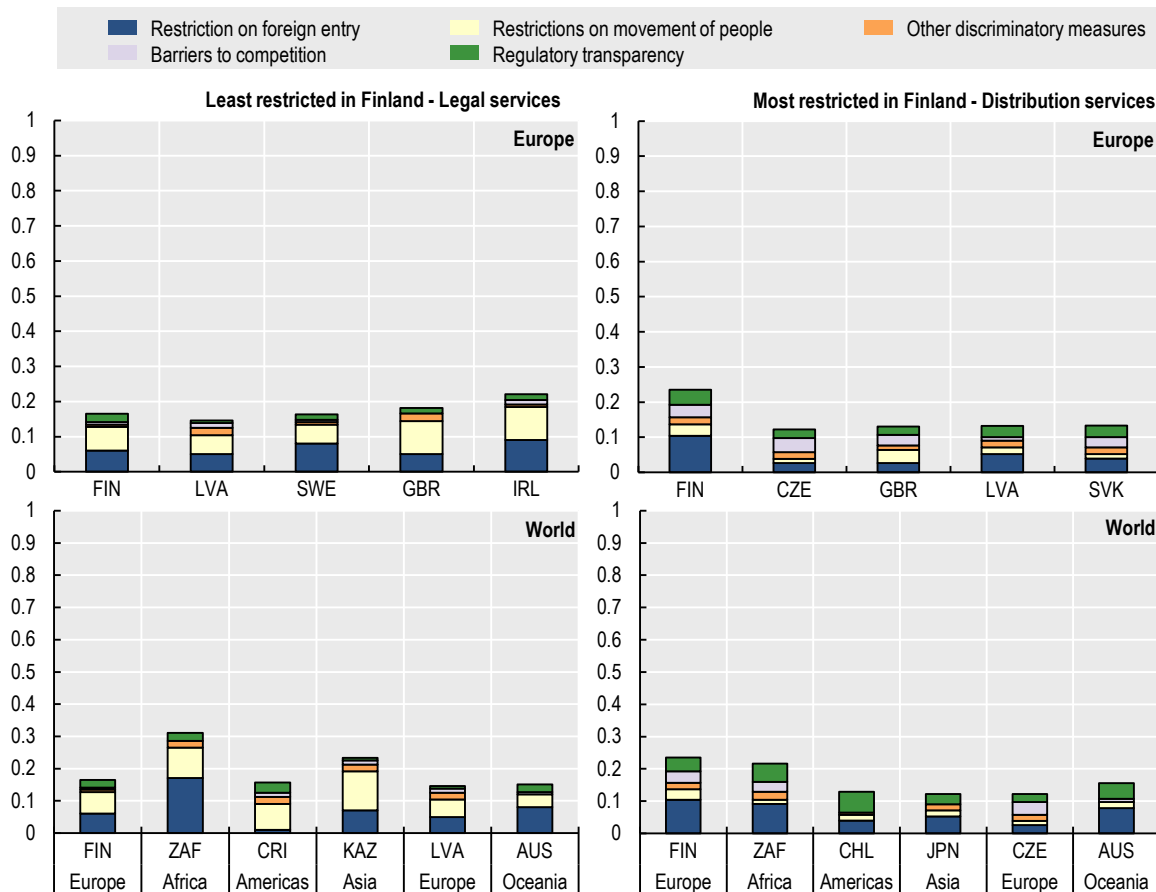
Figure 3. Sectoral breakdown – The least and most restricted sectors in Finland



Note: Selection was made based on how far the sectors' score were from the world average score, as a percentage difference
i.e. $(STRI_{country, sector} - STRI_{world average, sector}) / STRI_{world average, sector}$
Source: OECD STRI database (2020).

Legal services are the least restricted services sector in Finland compared to Europe and the other best performers elsewhere while road freight transport are the most restricted (Figure 4).

Figure 4. Finland compared to Europe and World's best performers

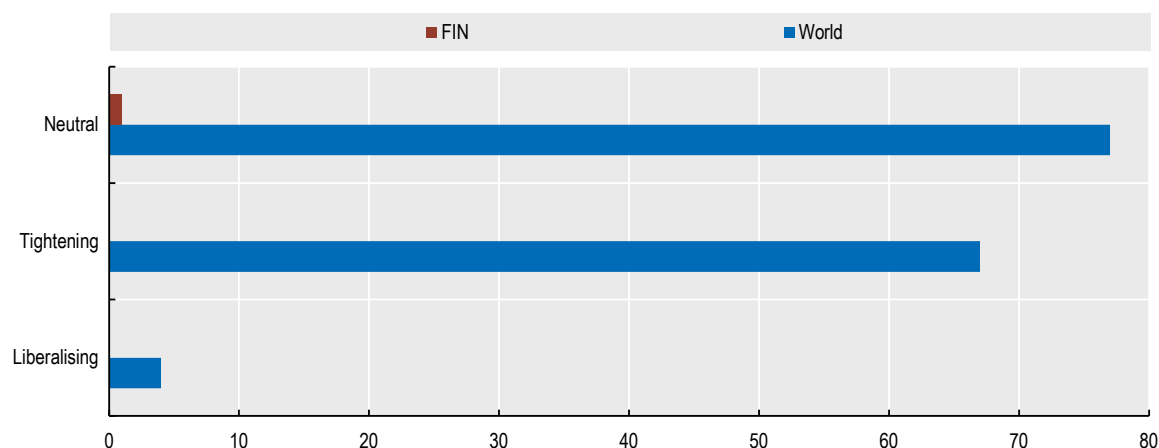


Source: OECD STRI database (2020).

Special focus: Impact of COVID-19-related measures on the stringency of services regulations

While Finland has adopted several measures in response to the COVID-19 crisis, these were either temporary in nature or not directly relevant for the measures considered in the STRI database. This includes the extension of partial exemption of certain anti-competitive agreements from competition law in the maritime transport sector, following a 2020 EU regulation. Many countries have tightened their regulatory framework following the COVID-19 shock, by tightening their investment screening process or their visas requirements (Figure 5).

Figure 5. COVID-19 related measures in Finland and in the world



Source: OECD STRI database (2020).

Key reforms

In 2020, Finland also introduced new conditions for non-EU/EEA individuals and entities seeking to buy real estate in the country. In commercial banking, new regulations were introduced in 2020 on interest rates and conditions for consumer credits.

Recent changes affecting Finland were due to changes in EU law. Regulation 2019/452 allows EU Member States to maintain, amend or adopt mechanisms to screen foreign direct investments in their territory on grounds of security or public order. It applies from 11 October 2020. In the context of the COVID-19 pandemic, Regulation 2020/459 waived the 80/20 grandfathering rule for airport slot allocations between 1 March 2020 and 27 March 2021. Accordingly, airport coordinators are required to consider slots allocated for this period as having been operated by the air carrier to which they were initially allocated. In maritime transport, Regulation 2020/436 extended the existing block exemption to liner shipping consortia from competition law until April 2024. In March 2019, EU-wide requirements on accounting separation entered into force for port authorities in receipt of public funds. The new EU General Data Protection Regulation (Regulation 2016/679) entered into force on 25 May 2018 providing a comprehensive update on the EU data protection regime.

More information

- » Access all country and sector notes, and interactive STRI tools on the OECD website at <http://oe.cd/stri>
- » Read more about services trade policies and their impact in [Services Trade Policies and the Global Economy](#)
- » Contact the OECD Trade and Agriculture Directorate with your questions at stri.contact@oecd.org