

Borderlands research and policy in Africa and Europe
Niamey, 4 December 2017

Cities and Borders in West Africa

Marie Trémolières, OECD

Leonardo A. Villalón, University of Florida

Olivier Walther, University of Florida

Lawali Dambo, University of Niamey

Moustapha Koné, University of Niamey

A research-policy partnership

- Memorandum of Understanding, OECD-UF



Source: OECD (2017)

Sahel and West Africa Club

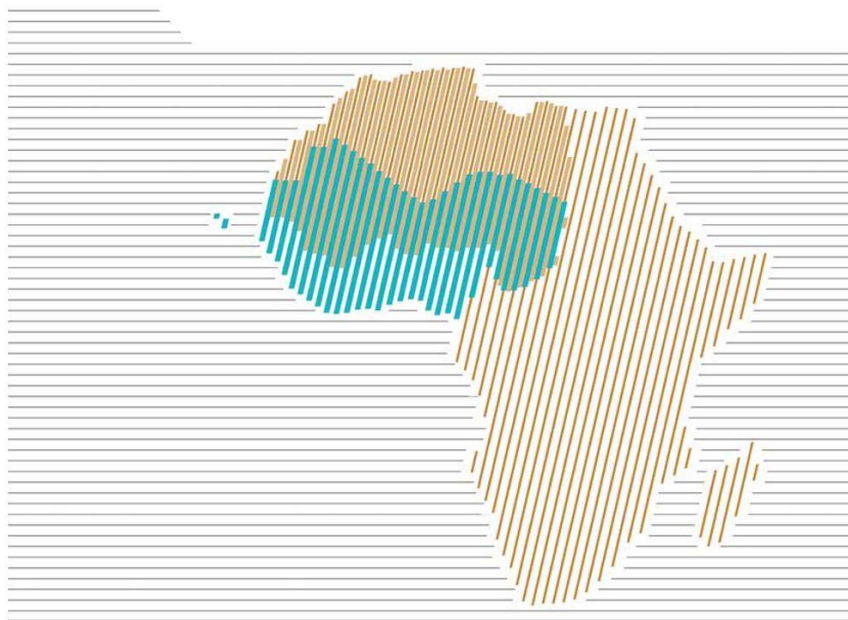
2013-14



West African Studies

An Atlas of the Sahara-Sahel

GEOGRAPHY, ECONOMICS AND SECURITY

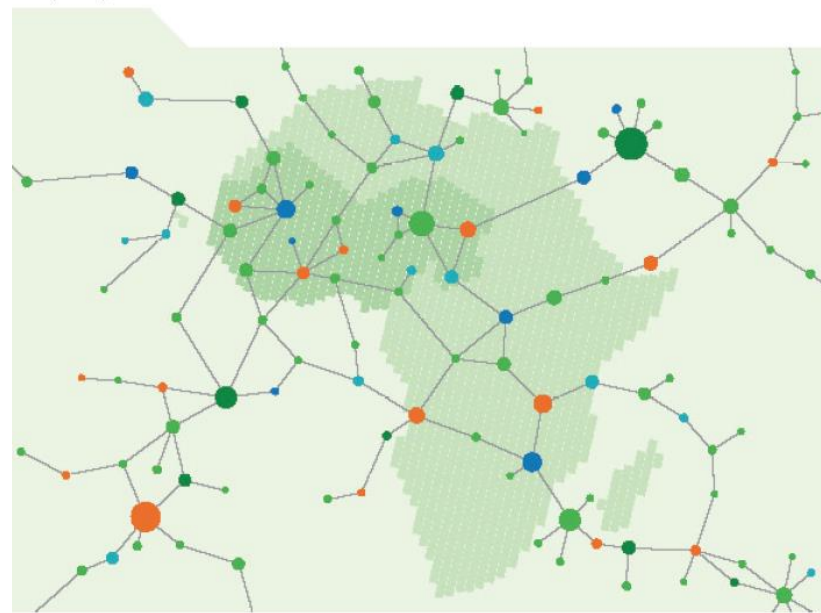


2015-16

West African Studies



Cross-border Co-operation and Policy Networks in West Africa



UF Sahel Research Group



UF | Sahel Research Group
Center for African Studies
UNIVERSITY of FLORIDA



Partners



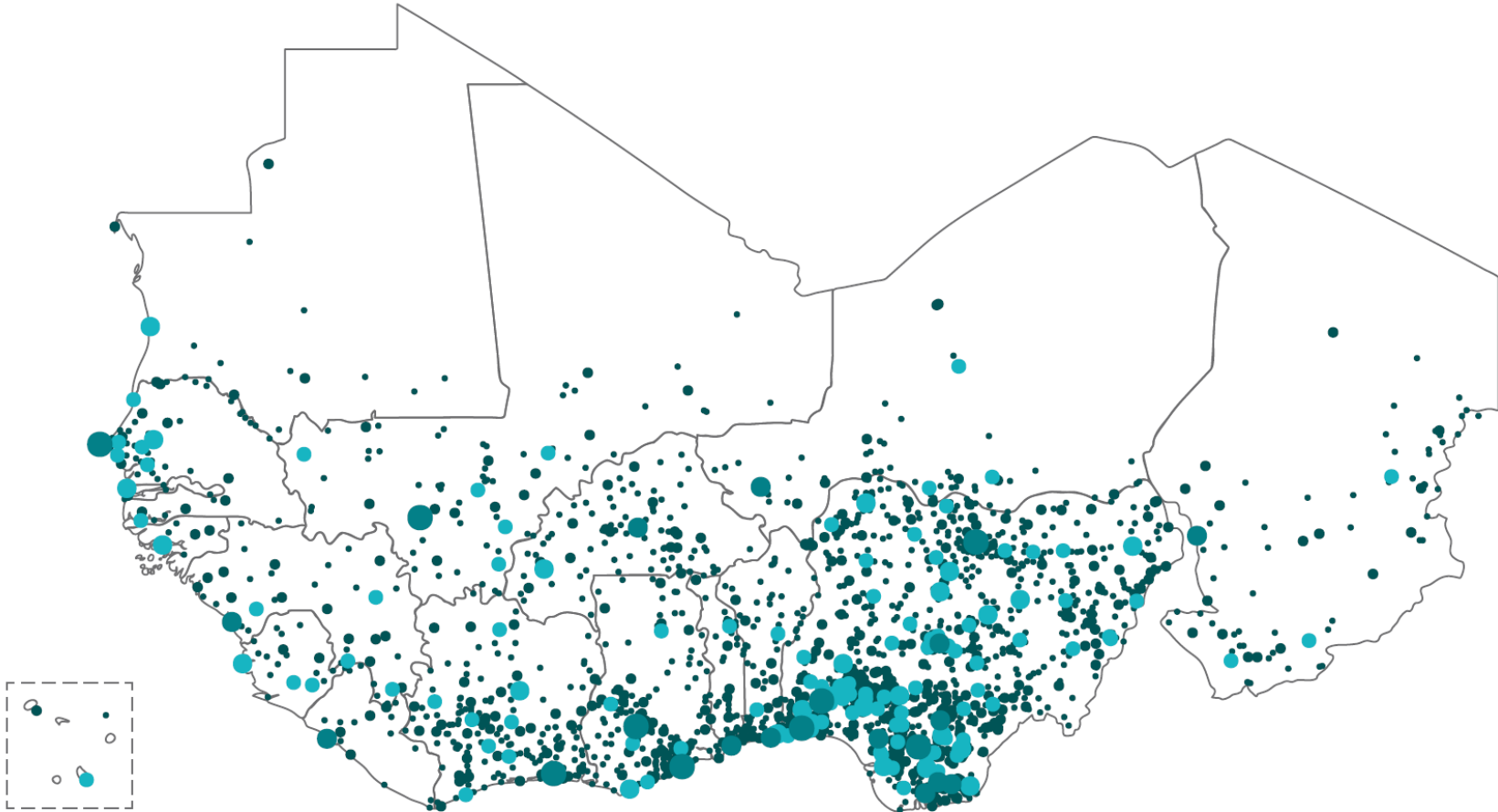
West African cities

2010

1 939
agglomerations

133
million
urban
population

level of
urbanisation
41%



City size

• 10 000 - 30 000

• 30 000 - 100 000

• 100 000 - 350 000

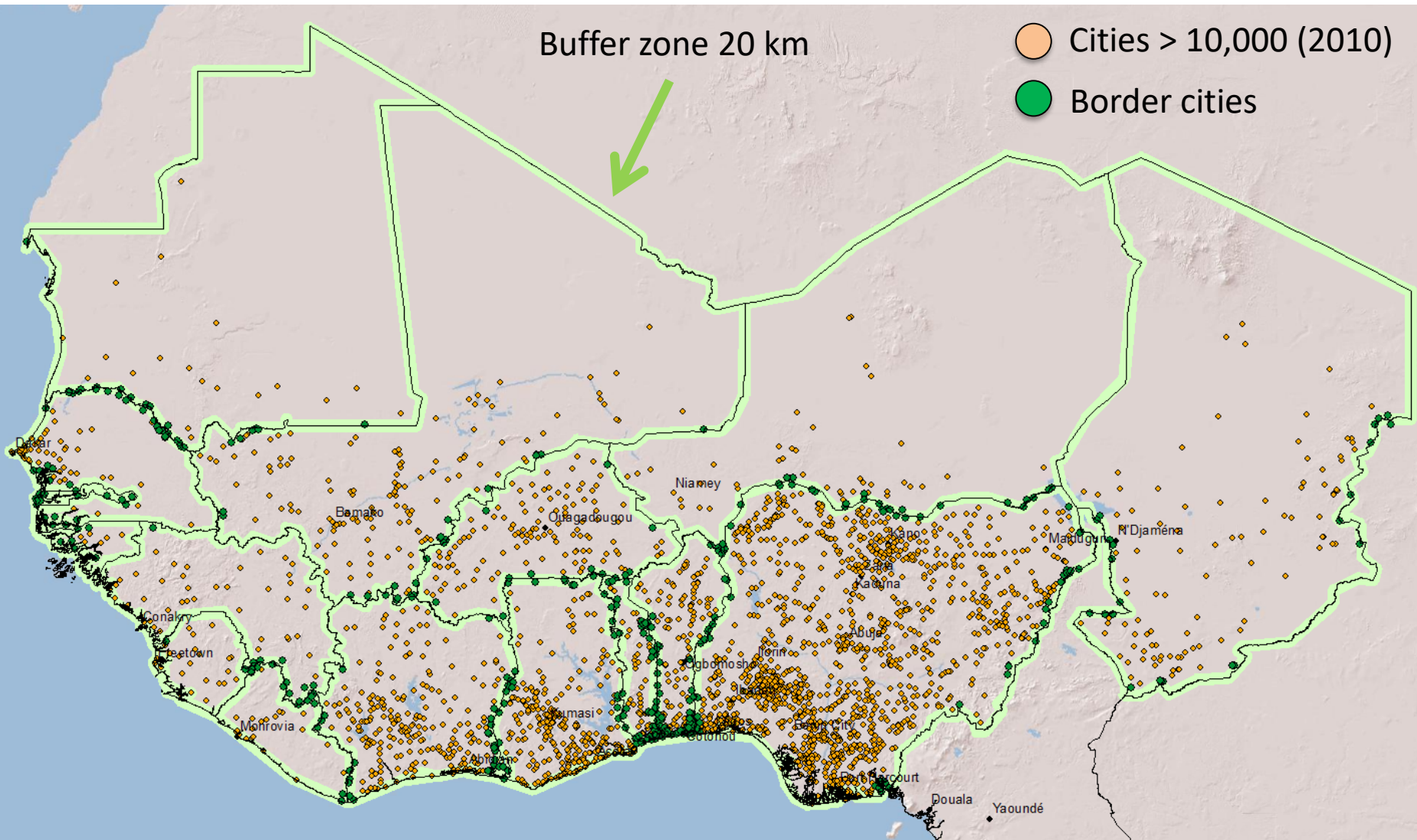
• 350 000 - 1 million

• 1- 2 million

• > 2 million

Source: Prieto Curiel, Heinrigs, Heo (2017)

West African border cities



Source: Africapolis, OECD (2015, 2017)

Objectives

- Identifying city morphologies and functions in terms of their relationships to borders
- Measuring the accessibility of border cities in terms of time and distance
- Analyzing how women traders' networks work

Morphology and functions of border cities

- Quantitative indicators

| | Convergence | Interactions |
|----------------|---|----------------------|
| Demography | Population, density, growth | |
| Morphology | Contiguity | |
| Infrastructure | Transport network, Joint border posts | Accessibility |
| Economy | Border markets, international firms | |
| Social | Health sites | |
| Institutions | Administrative levels | Twin cities |

Morphology

- Lomé and Aflao, the 'odd couple' (Nugent)



Morphology

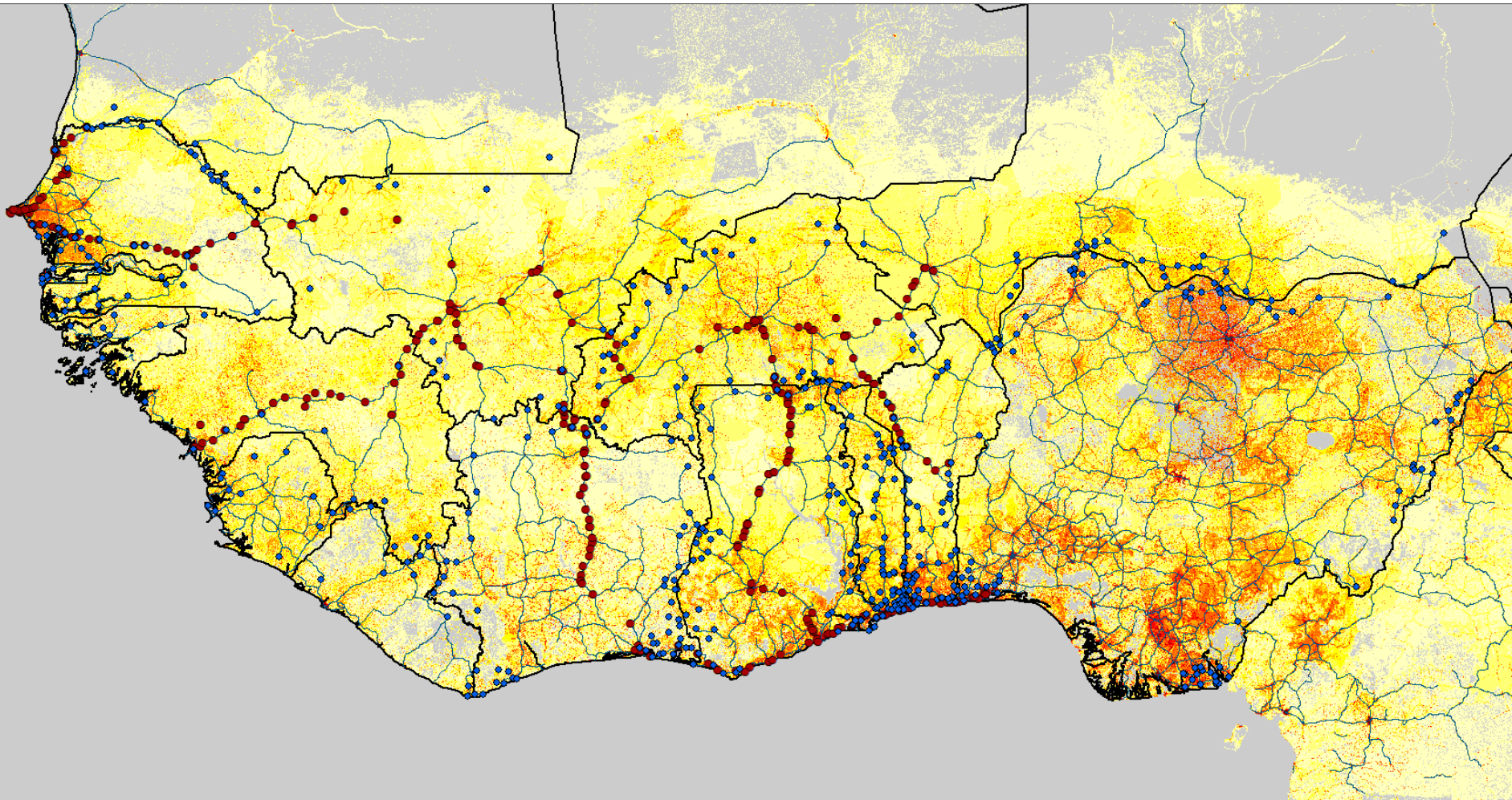
- Malanville's One Stop Border Post, 2002-2017



2002
2008
2010
2011
2012
2013
2016

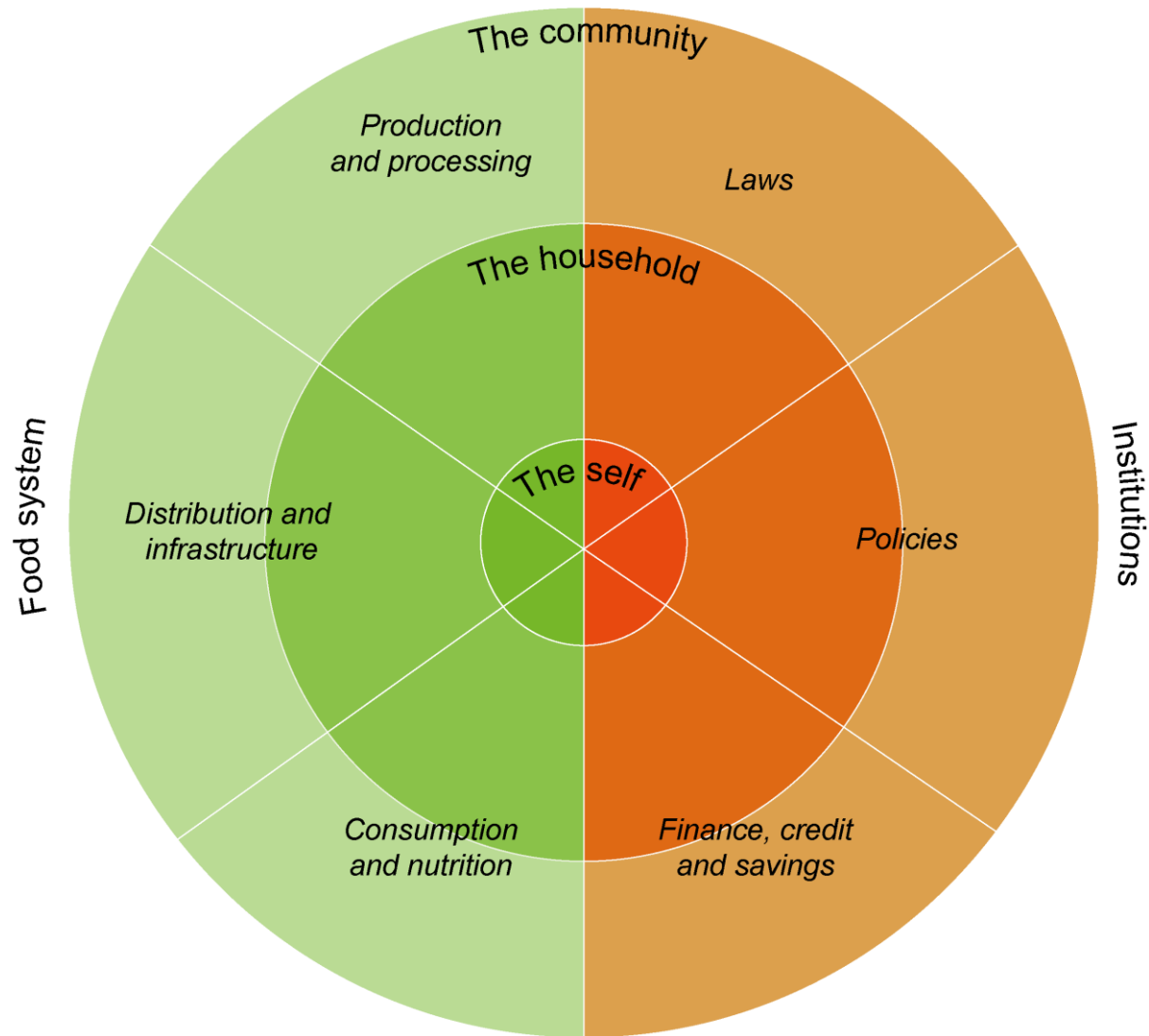
Source: Google Earth Time

Accessibility of border cities



Sources: OECD, Landscan, OSM, gROADSv1, SRTM3, GADM 2.8, Africapolis, CILSS, Walther 2017

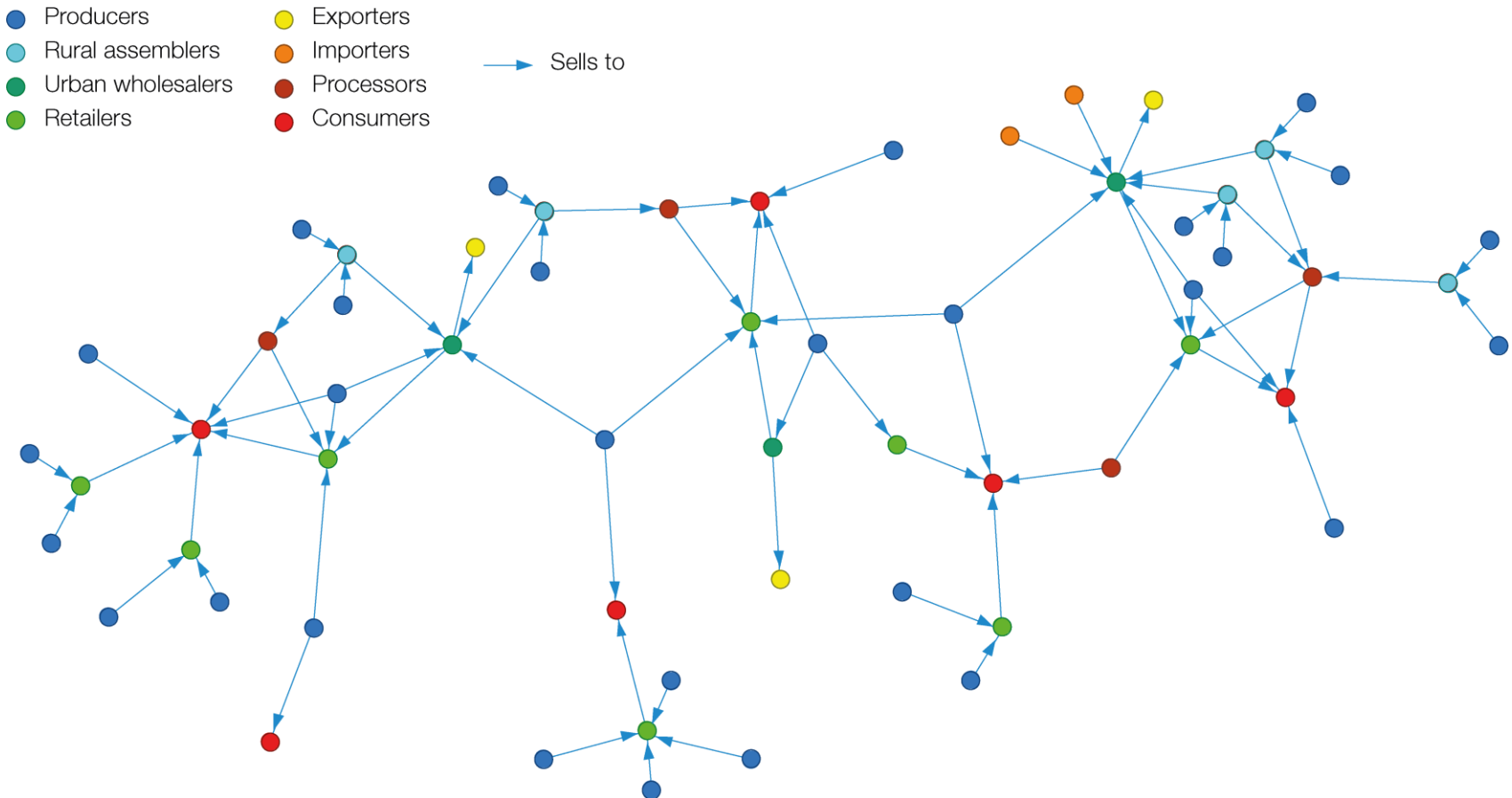
Barriers to women's participation in markets



Sources: World Bank 2012, WFP 2017, Gnisci 2016, Oxfam 2011, USAID 2014 and authors.

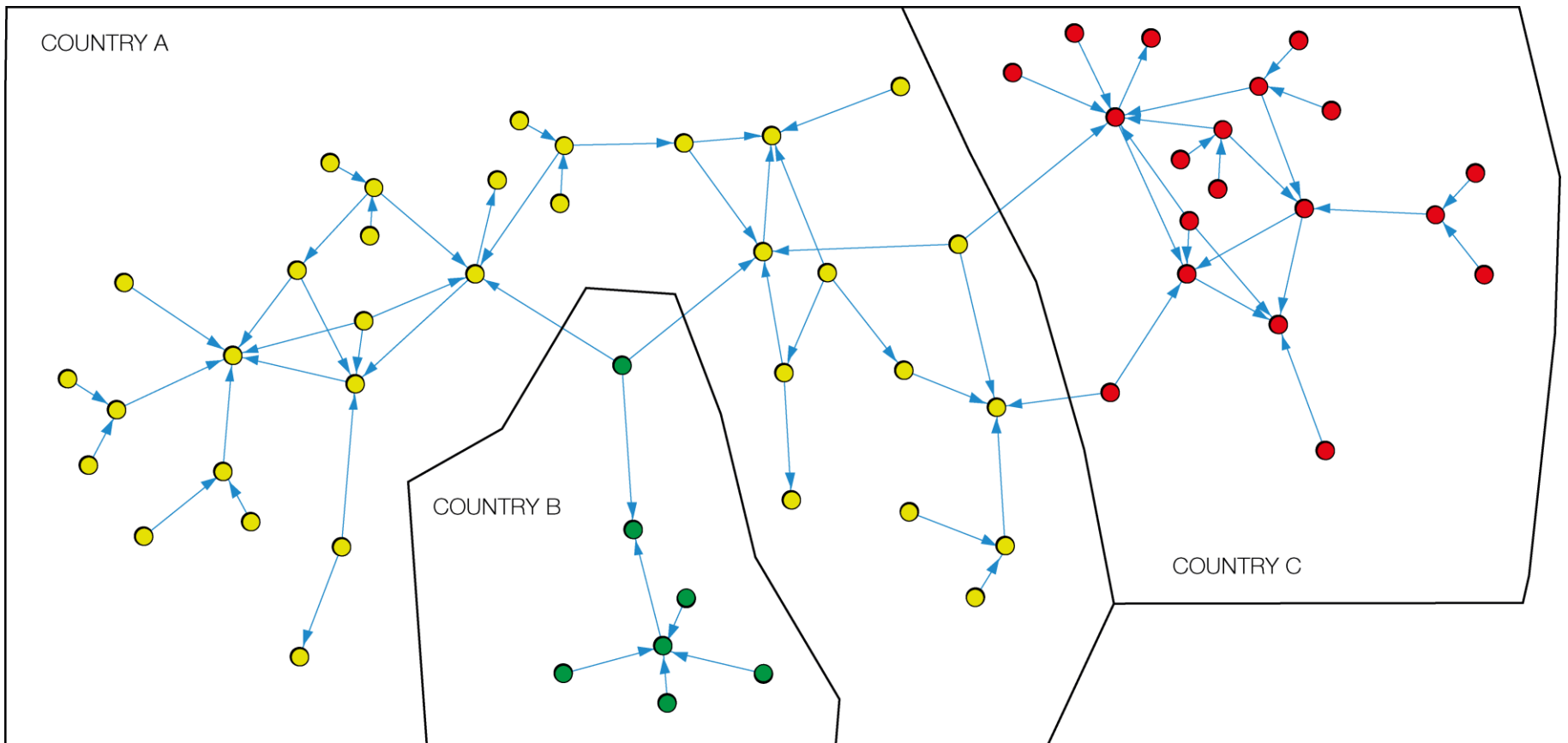
Mapping women's trade networks

- Supply chain, by roles



Mapping women's trade networks

- Supply chain, by country



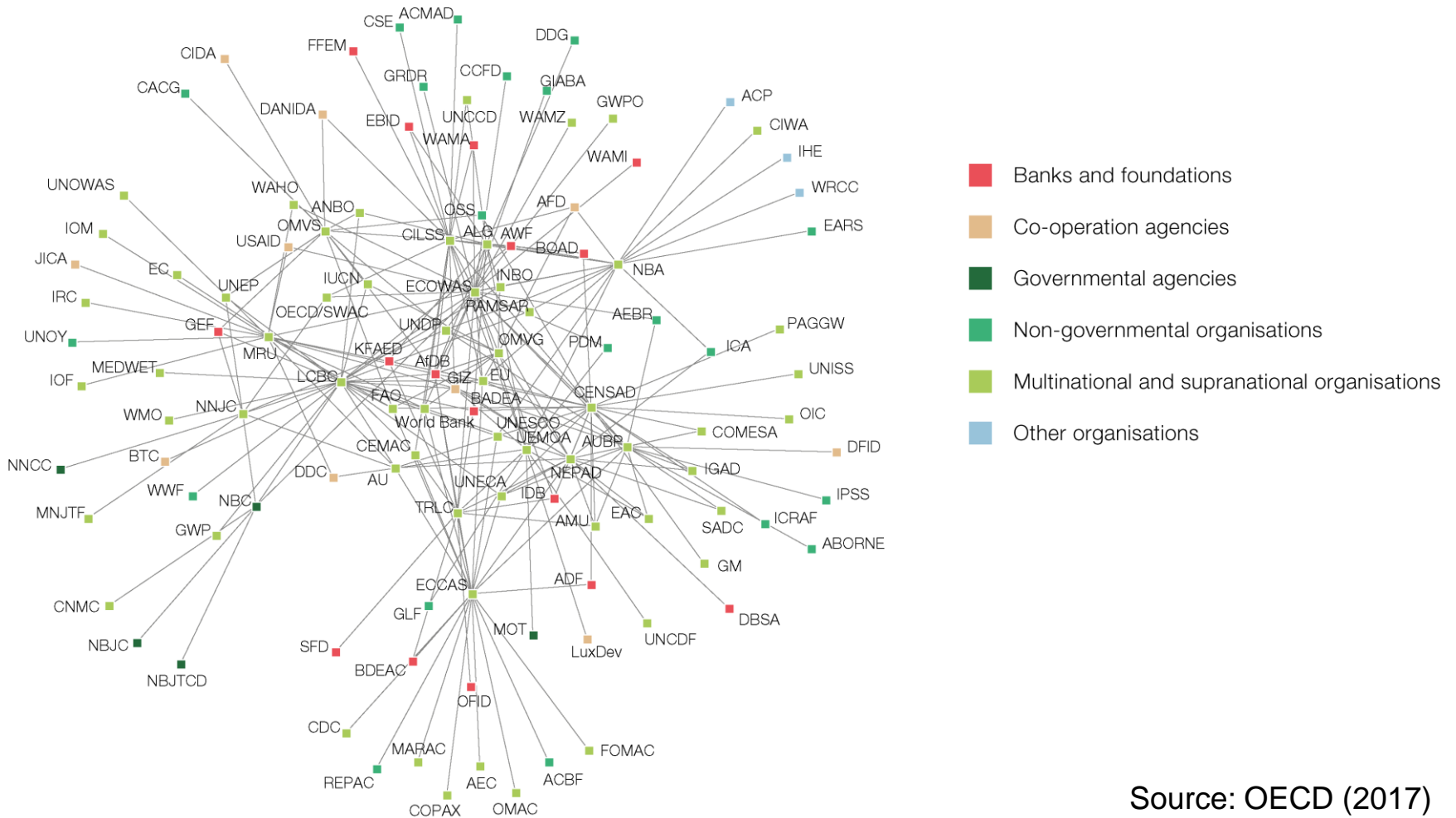
Mapping women's trade networks

- Supply chain, by gender

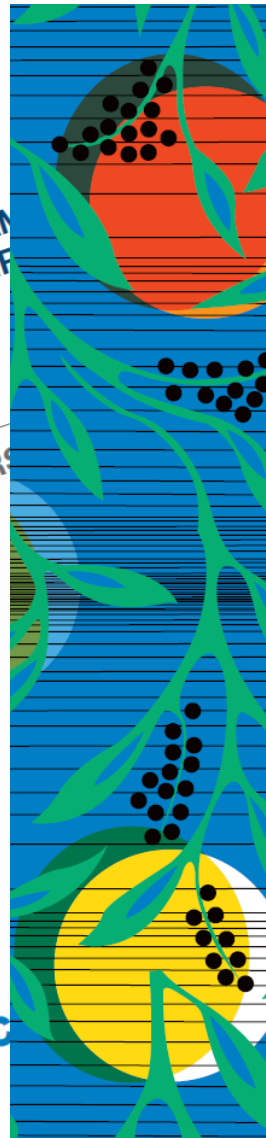
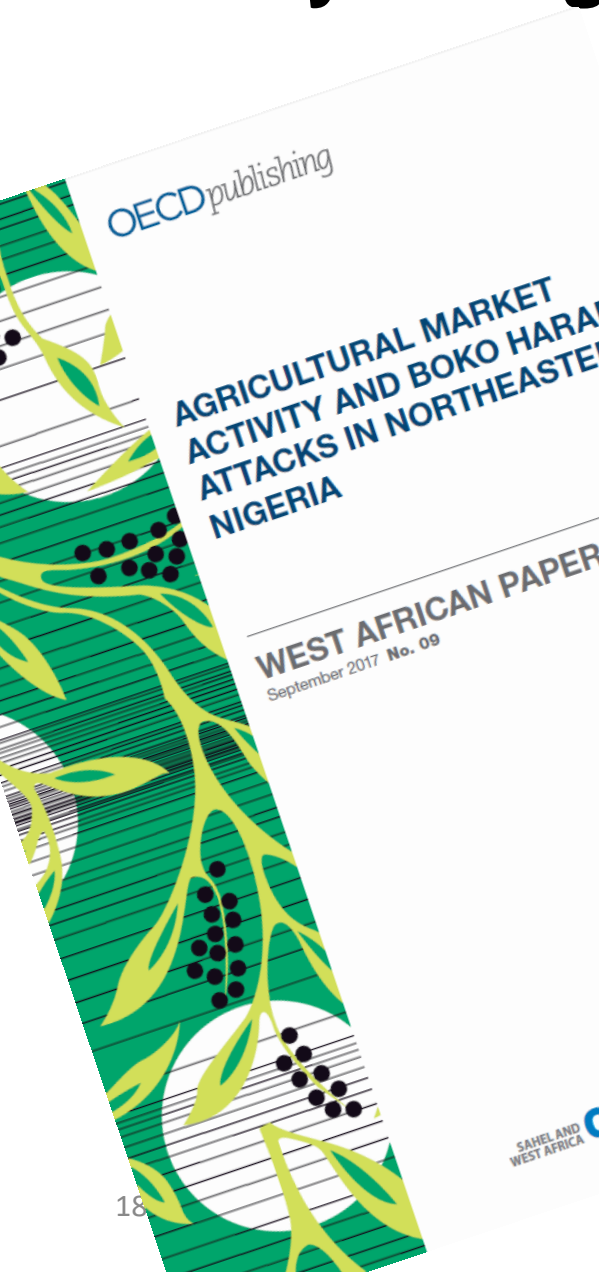


Mapping policy networks

- Empowerment of women's market activities



Policy dialogue



OECD publishing

CROSS-BORDER CO-OPERATION NETWORK IN WEST AFRICA

WEST AFRICAN PAPERS
June 2017 No. 06

SAHEL AND WEST AFRICA Club Secretariat



More information

- Professor Leonardo A. Villalón, PI (lvillalon@ufic.ufl.edu)
- Dr. Olivier J. Walther, Coordinator (owalther@ufl.edu)
- Sahel Research Group, University of Florida
http://sahelresearch.africa.ufl.edu/research/cities_and_borders_oecd/
- Sahel and West Africa Club, OECD –
<http://www.oecd.org/swac/topics/cities-and-borders/>