

Dubrovnik, Croatia
June 16–19 2009

Data processing Flow Chart

From returns to reports

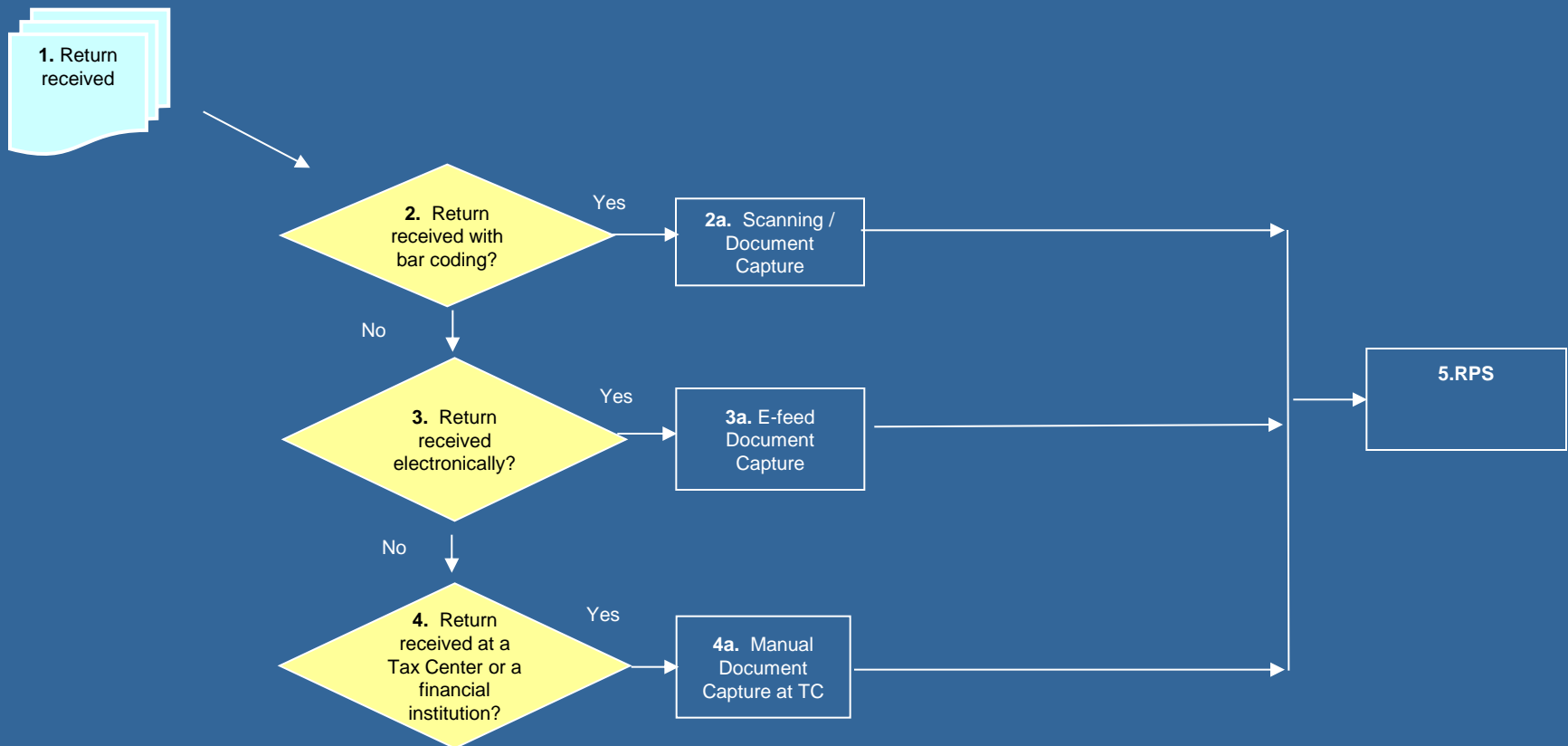
Objectives

- Give an overview of how returns are processed within CRA.
- Show how these data files are used to produce reports.

Major Stakeholders

- Return Processing System (RPS) processes returns.
- Standardized Accounting (SA) processes accounting functions.
- Statistics & Information Management Directorate (SIMD) prepare data for clients (Finance, Provinces, Statistical Agency)

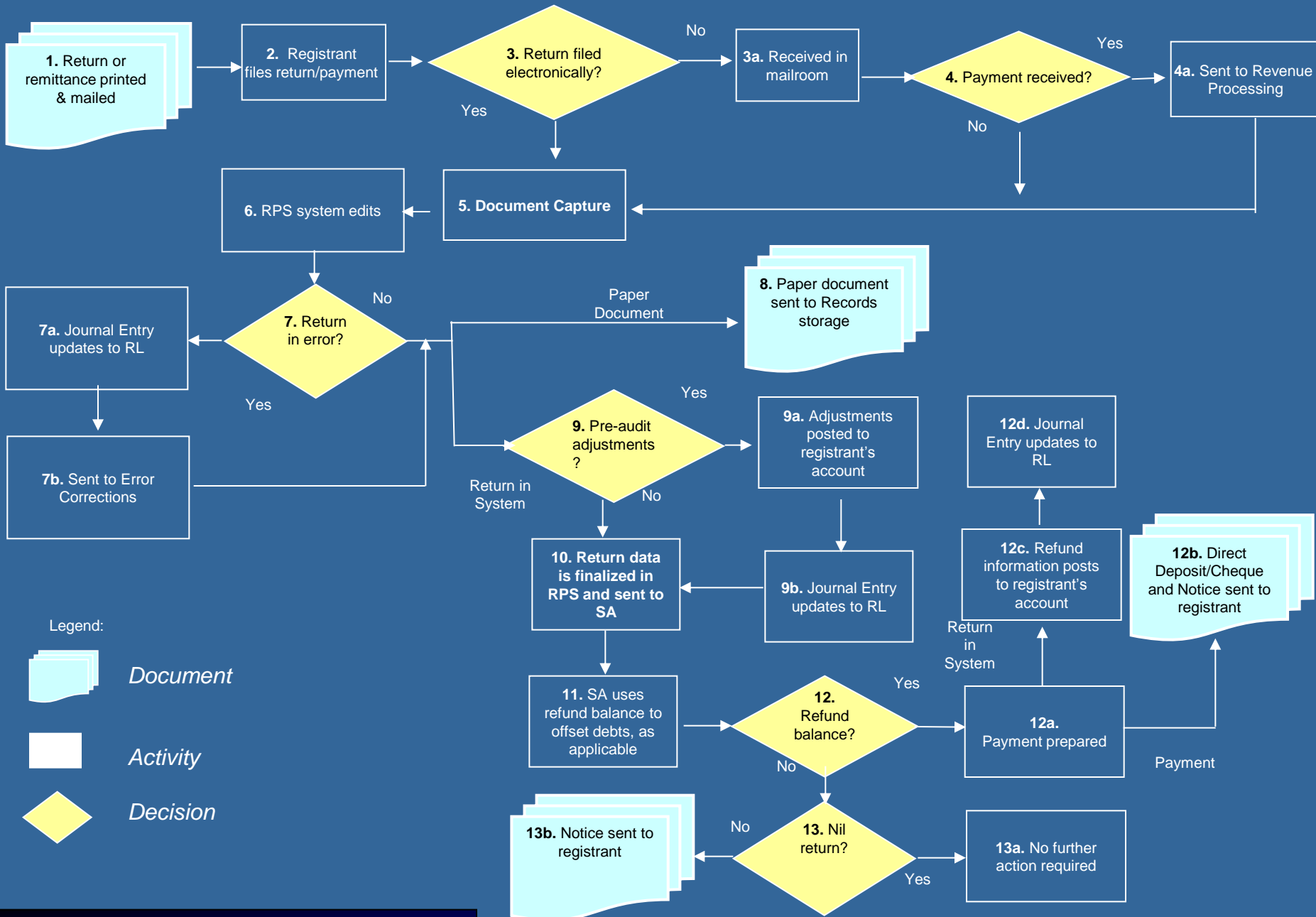
RETURNS DOCUMENT CAPTURE METHODS



Returns

- The **Returns Processing Section** is responsible for processing returns from all jurisdictions (with some exceptions)
- For example, each year in Canada
 - Approximately 7 million VAT returns are processed.
 - Approximately 1.2 million corporate income tax returns are processed
 - Approximately 23 million personal income tax returns are processed

Example of Processing Flow

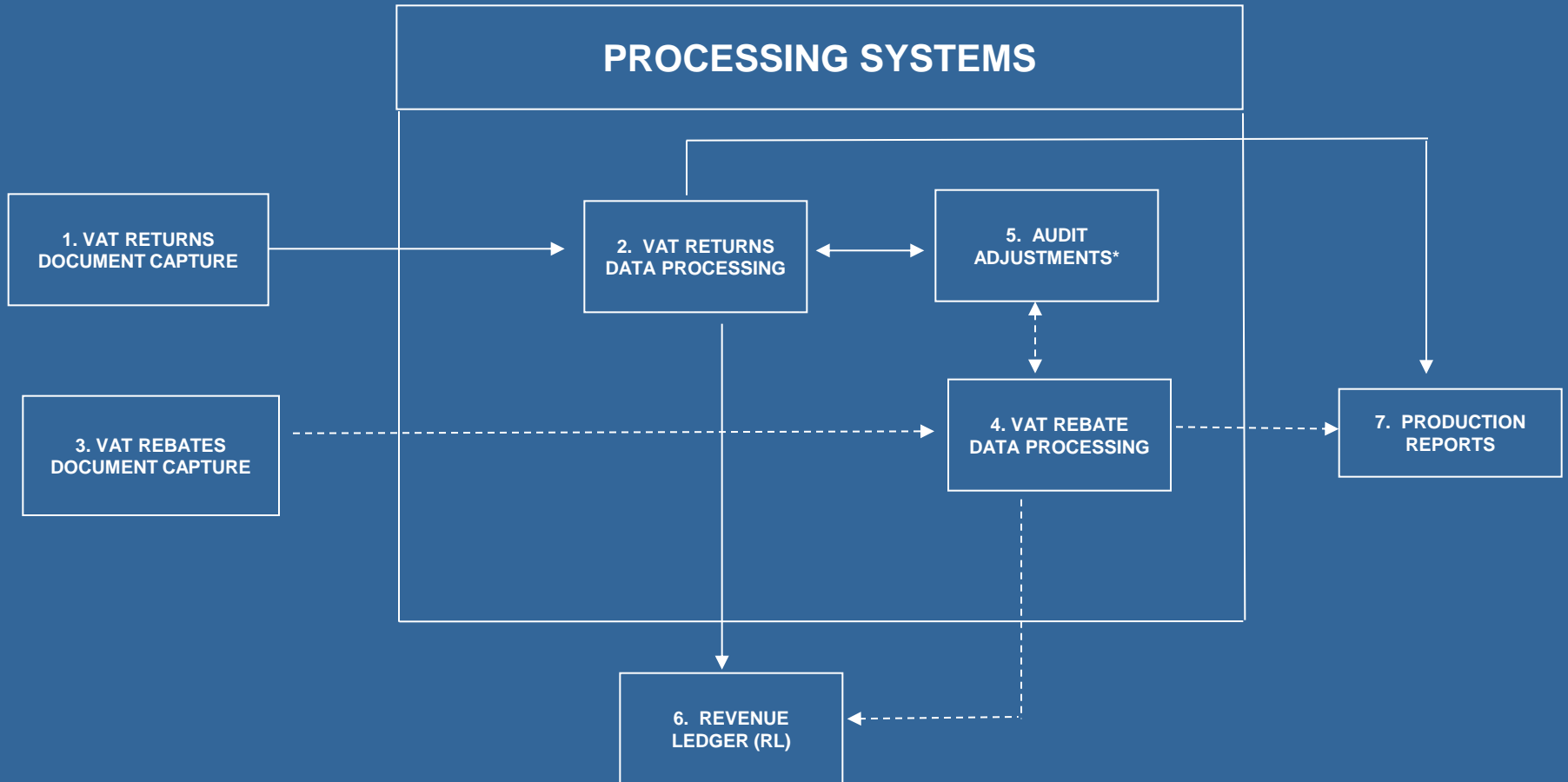


Data processing Flow Chart

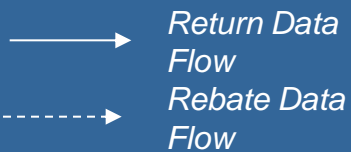
Returns feed to Revenue Ledger and Reports

- This last figure will show how the system feeds in the Revenue Pool Report and micro-data files.

EXAMPLE: VAT Feeds to RL



Legend:



*Audit has two components:
1) Automated edit checks of returns which may lead to a pre-audit
2) Selected post-audits of all returns