

Dynamiques de peuplement et marchés

POA

Secrétariat du Club du Sahel et de l'Afrique de l'Ouest
Perspectives ouest-africaines : peuplement, marché et sécurité alimentaire
7 décembre 2012

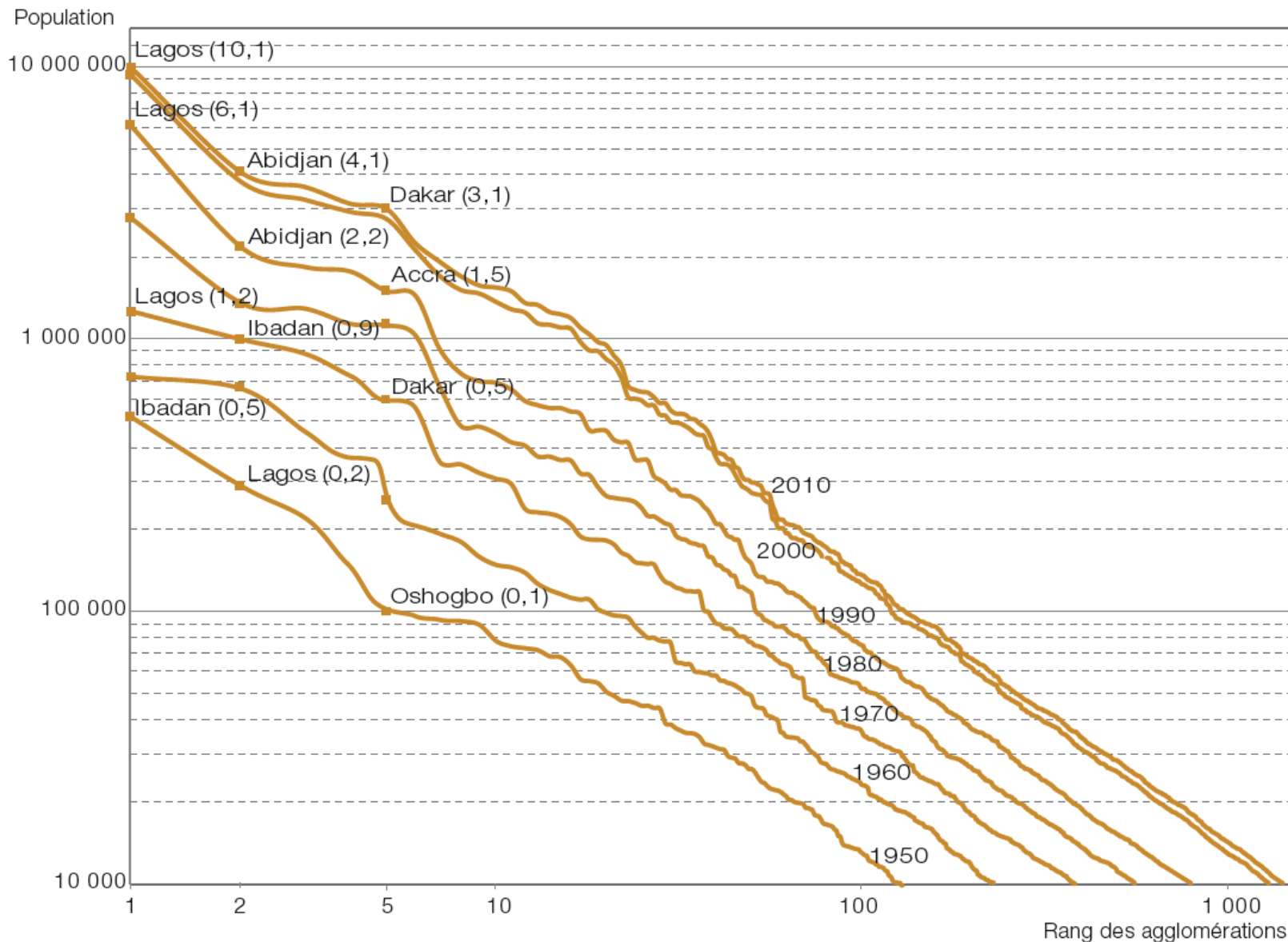
www.oecd.org/csao/poa

Secrétariat du
Club  DU SAHEL ET DE
L'AFRIQUE DE L'OUEST

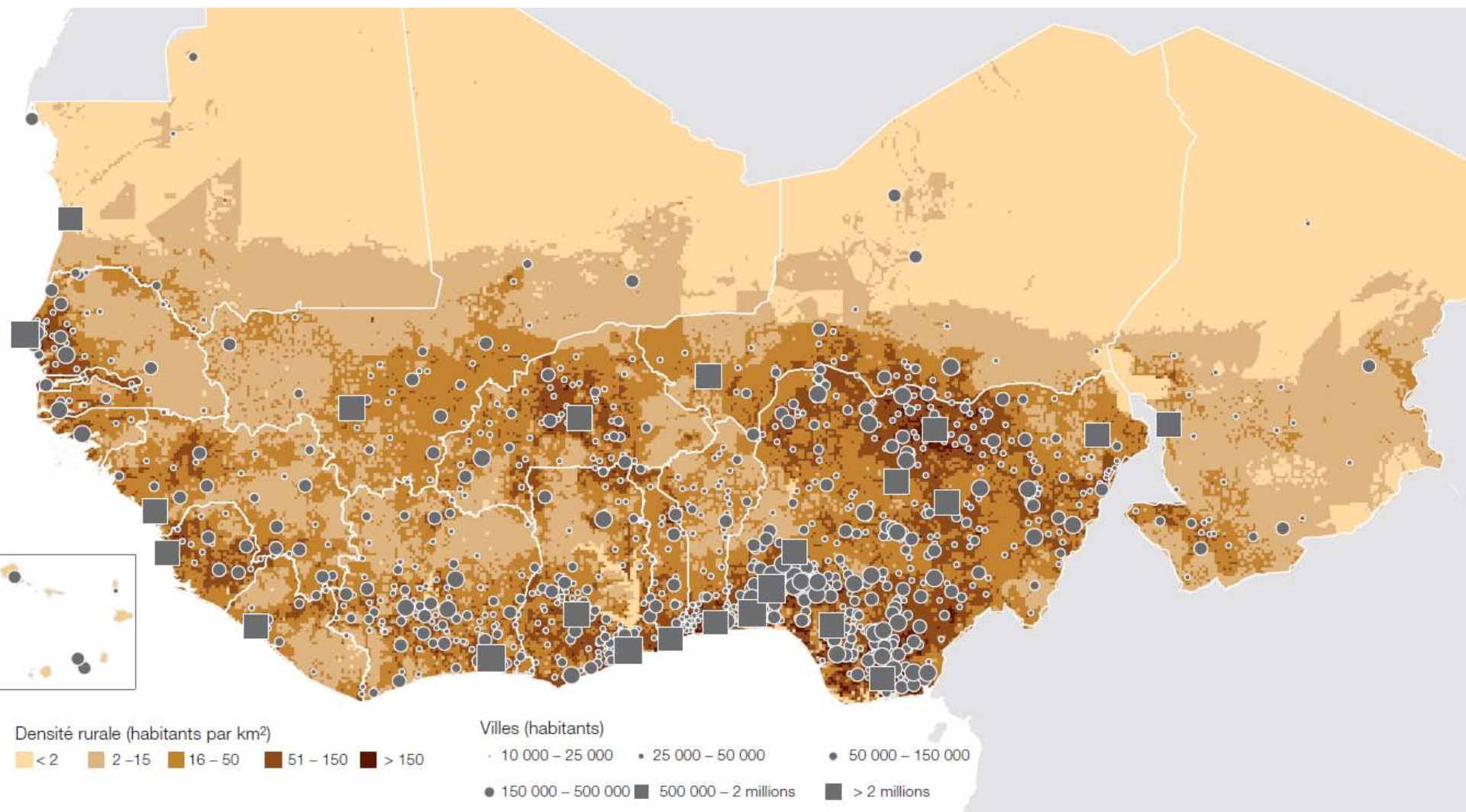


	1950	2010	2050
Benin	4%	49%	70%
Burkina Faso	2%	30%	58%
Cap-Vert	10%	58%	90%
Côte d'Ivoire	7%	55%	77%
Gambie	11%	48%	73%
Ghana	12%	49%	75%
Guinée	4%	32%	56%
Guinée-Bissau	9%	41%	65%
Libéria	3%	51%	72%
Mali	3%	24%	60%
Mauritanie	0%	35%	74%
Niger	2%	21%	54%
Nigéria	10%	42%	69%
Sénégal	15%	52%	68%
Sierra Léone	6%	38%	64%
Tchad	3%	22%	54%
Togo	8%	59%	76%
Afrique de l'Ouest	8%	41%	67%

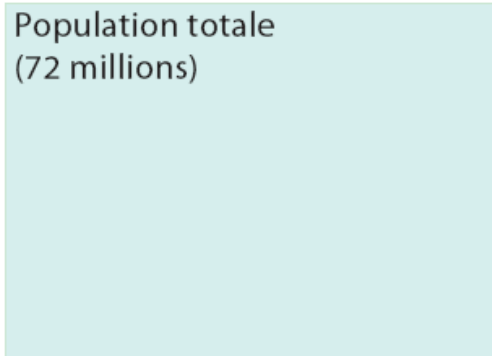
Distribution des agglomérations



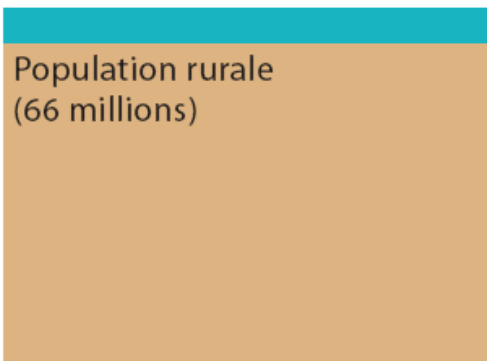
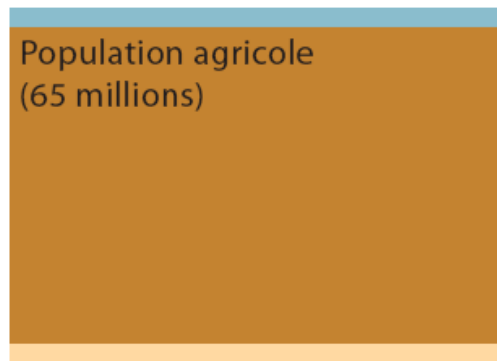
Sources : Africapolis 2008 ; CSAO/OCDE 2012



1950



Population urbaine (6 millions)

Population urbaine
non agricole (3 millions)Population rurale
non agricole (4 millions)

2010

Population totale
(290 millions)

Population urbaine
(118 millions)

Population rurale
(172 millions)

Population urbaine
non agricole (104 millions)

Population urbaine
agricole (14 millions)

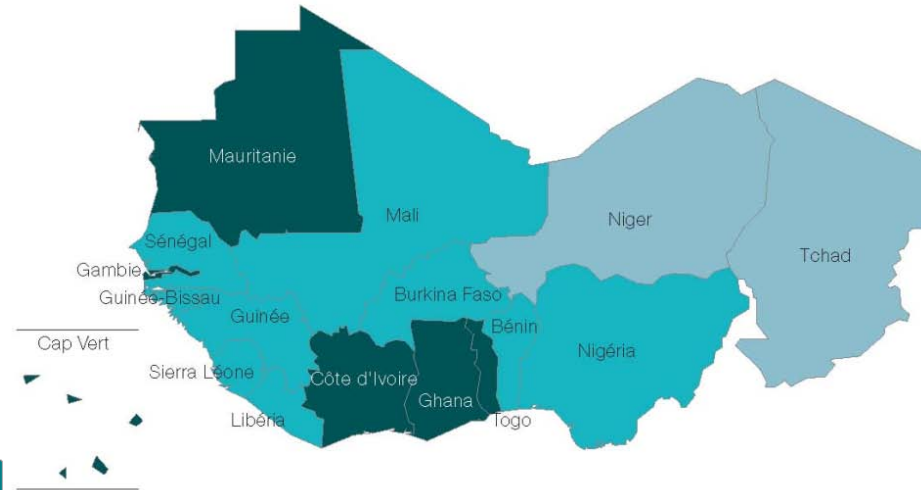
Population rurale
agricole (129 millions)

Population rurale
non agricole (43 million)

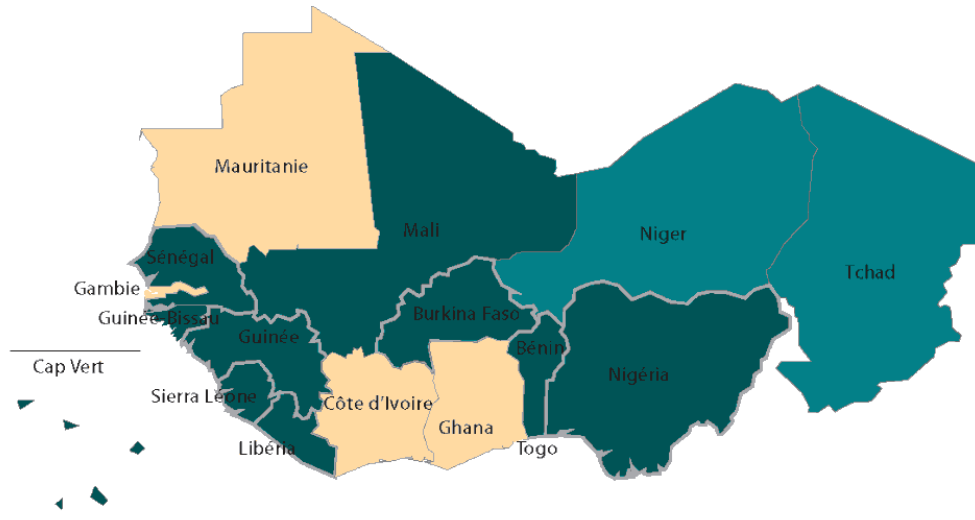
1950



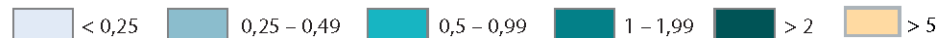
2050



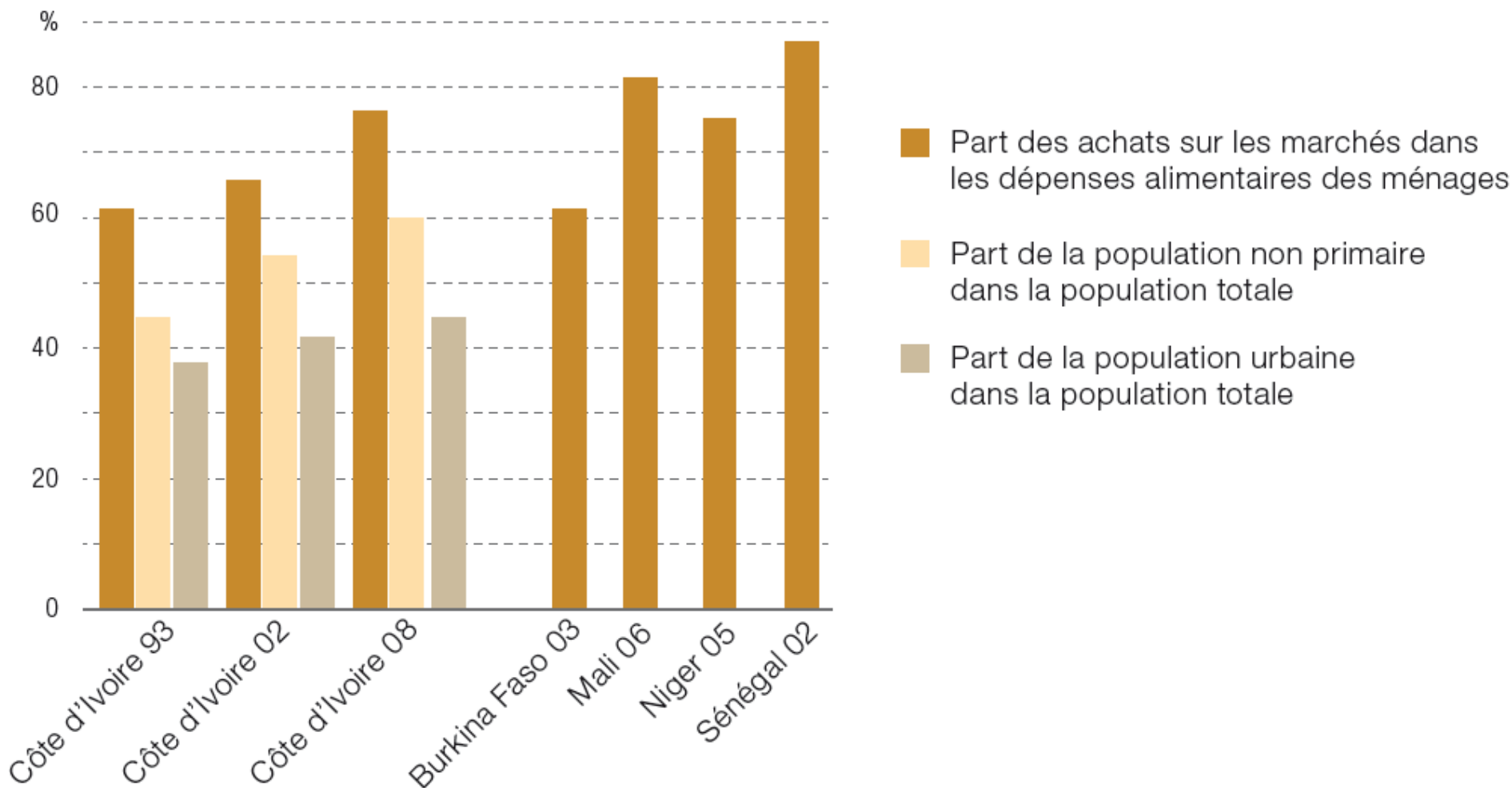
2050



Valeur PNA/PA



Sources : CSAO/OCDE 2012



Sources : MSU, SRAI programme 2011 ; FAO, PopSTAT ; Africapolis 2008 ; et calculs des auteurs

