

Session 1: Understanding BAT around the World

Understanding BAT in Korea

Phil-Goo Kang, Hyeonjeong Hwang
K-BREF Secretariat, NIER, KOREA

최적가용기법 기준서 사무국

BREF Secretariat



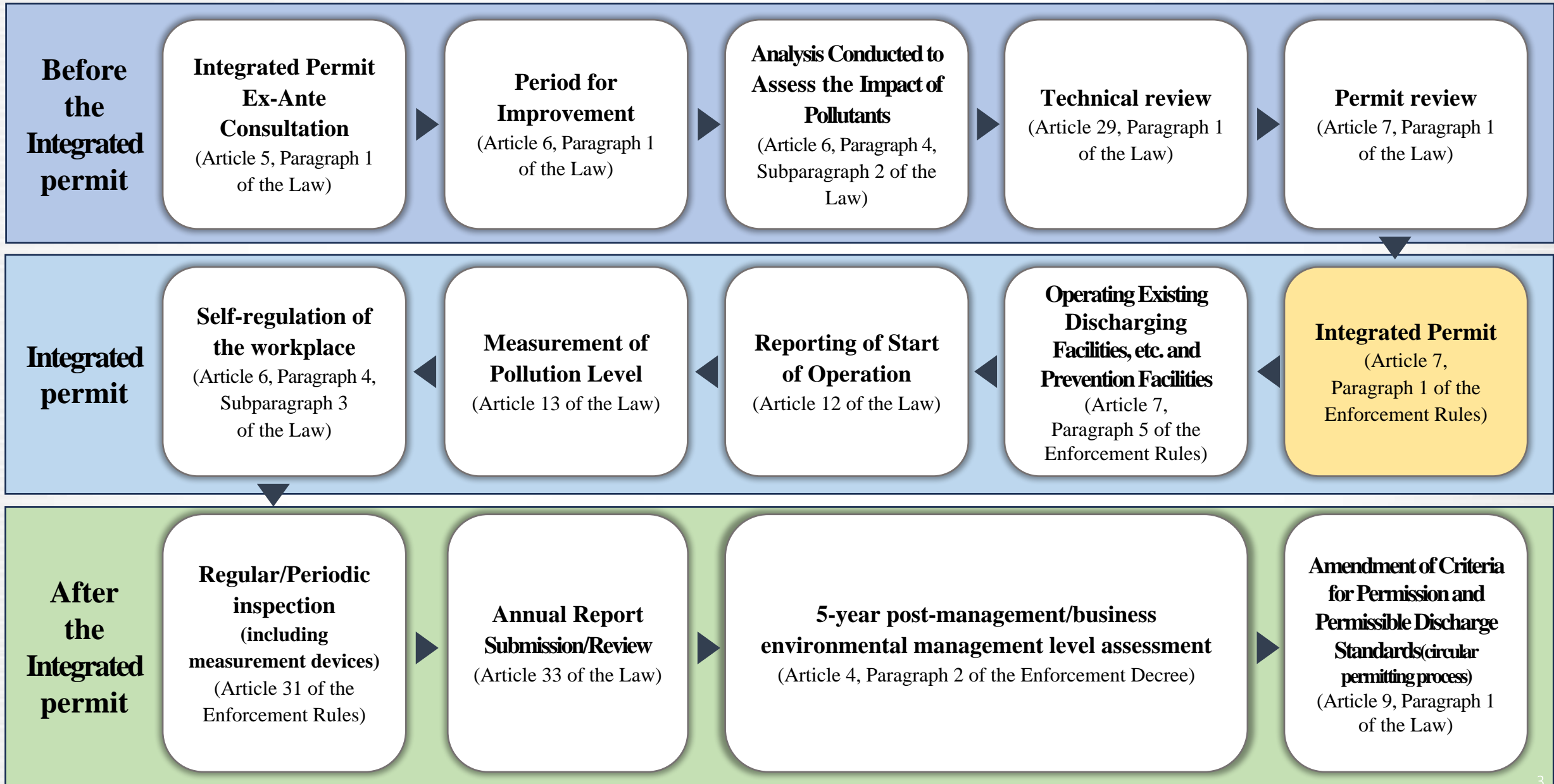
01

CHAPTER

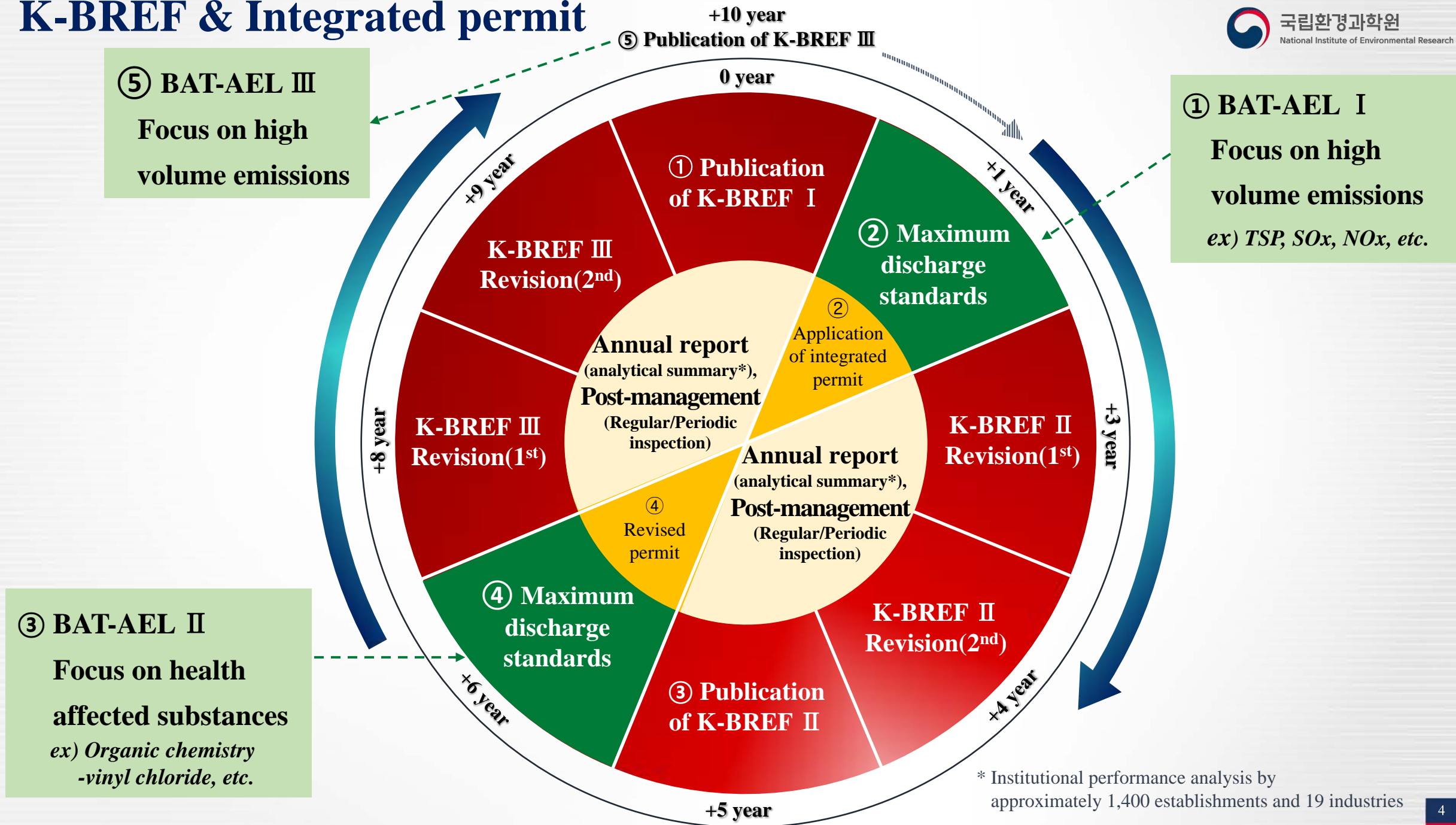
Overview



Integrated Environment Permit Legal Process, Korea



K-BREF & Integrated permit



K-BREF Roadmap

- **1st version (2017-2021)** 19 sectors BREFs and 1 common BREF
- **2nd version (2022-2026)** 5 sectors BREFs revision. And, Waste Treatment(e.g., landfill) and Cement are newly added.

* Legally, every 5 to 7 years of revision is required.

Category	2013	2014	2015	2016	2017	2018	2019	2020	2021	2022	2023	2024	2025	2026	2027	2028	2029	2030	2031
		1 st version								2 nd version					3 rd version				
1. Power generation and steam 2. Waste Incineration	Status*	Draft**		Publish	Enforce		Status	Draft	Annual report (review)	Publish	Apply			Draft	Publish				
3. Steel 4. Nonferrous 5. Organic chemistry		Status	Draft		Publish	Enforce		Status	Draft	Annual report (review)	Publish	Apply			Draft	Publish			
6. Petroleum 7. Inorganic 8. Fine chemistry 9. Fertilizer & N comp.			Status	Draft		Publish	Enforce		Status	Draft	Annual report (review)	Publish	Apply			Draft	Publish		
10. Pulp and paper 11. Electronic component 12. Semiconductor 13. Textile dyeing				Status	Draft		Publish	Enforce (10, 11)	Enforce (12, 13)	Status	Draft	Annual report (review)	Publish	Apply			Draft	Publish	
14. Meat 15. Alcohol 16. Plastic 17. Automotive parts					Status	Draft		Publish	Enforce		Status	Draft	Annual report (review)	Publish	Apply			Draft	Publish
18. Common facilities (Boiler)							Status	Draft	Publish	Apply		Status	Draft	Publish	Apply				
19. Waste treatment								Status	Draft	Publish	Enforce		Status	Draft	Publish	Apply			
20. Cement									Status	Draft	Publish	Enforce		Status	Draft	Publish	Apply		
21. All sector's general BAT (Air and Water)												Status	Draft	Publish	Apply				
22. All sector's general BAT (EMS)													Status	Draft	Publish	Apply			

* **Status:** Technique status survey

** **Draft:** BREF draft

\$ **Annual report review:** Business with integrate permission needs to submit monthly plant operation data, and then, K-BREF Secretariat analyzes data and produces annual report every business and sector.

02

CHAPTER

Success and challenges



Success (Existing plant Permission: `17~24 with sectors)

Quantitative aspect: Need more time (i.e., decrease of pollutants)

- Apparently some decreases of TSP, SOx and NOx are observed in PP and WI

**Qualitative aspect: Increase of industrial interest on BAT and
of investment on installation and human resources**

Challenges

Importance of infra on Ex-Post Management and Countermeasure

Collaboration with advanced and developing countries

Further reflection on Green house gas, net zero policy, etc.

Thank you for your attention



Phil-Goo Kang Senior Researcher, Ph.D.(Biogeochemistry)
BREF Secretariat, Integrated Environmental Permit Research
+82-32-560-7694
philgkang@korea.kr, kangphilgoo@gmail.com



Hyeonjeong Hwang Research Fellow
BREF Secretariat, Integrated Environmental Permit Research
+82-32-560-7681
hhjeong54@korea.kr