



A territorial approach to climate action and resilience

The OECD Programme *A Territorial Approach to Climate Action and Resilience* supports cities, regions and countries in their efforts to drive the zero-carbon transition and build systemic resilience across levels of government, by strengthening localised reporting and monitoring frameworks, fostering dialogue and knowledge sharing, and providing tailored recommendations on policy design and implementation.

Why this programme?

Global warming may reach 1.5°C as early as 2030 at current rates, with climate change impacts worsening as emissions rise.

Cities and regions are at the forefront of implementing ambitious climate action and resilience measures. Many have adopted more ambitious targets and actions than their national governments. However, when acting alone, their full potential for systemic change is untapped.

A territorial approach can promote place-based policy responses to accelerate climate mitigation and adaptation efforts throughout a country and identify potential synergies between climate and wider well-being (e.g. health, equity, incomes, jobs). Countries, regions and cities must work together to factor in local contexts and trigger place-based and people-centred actions.

The COVID-19 crisis risks delaying climate action several precious years, but it presents a chance to align stimulus measures with efforts to “build back better and more sustainably”.

Objectives

The programme aims to support national, regional and local policymakers in their efforts to develop and implement their climate plans, strategies and policy instruments, by proposing a new policy framework applying a territorial approach.

To achieve this goal, the programme will:

- 1) Strengthen the evidence base by developing “zero-carbon transition and climate resilience benchmarks”, to help countries understand subnational climate action potential and identify synergies/trade-offs between climate & well-being outcomes;
- 2) Analyse national and subnational climate policy and governance frameworks across sectors, and develop a “checklist for action” to support policy reform;
- 3) Collect, analyse and disseminate innovative climate policies and initiatives as well as economic stimulus measures that place climate at the centre of priorities; and
- 4) Track subnational climate finance.



Expected outcomes

A territorial approach to climate action and resilience supports cities, regions and countries to drive the zero-carbon transition and build systemic resilience, by delivering:

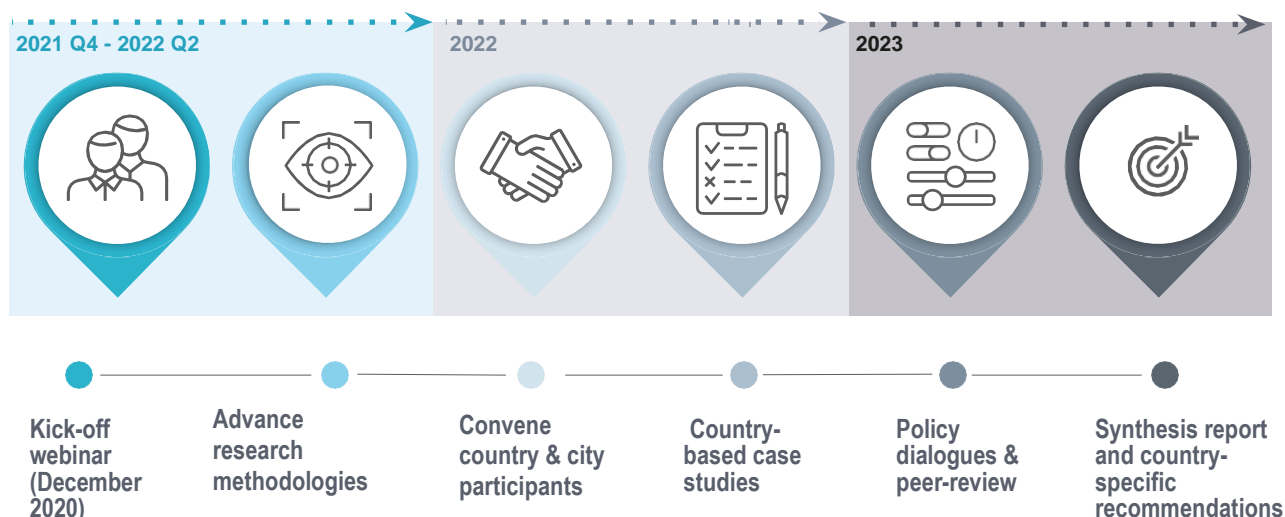
- ✓ **Localised reporting and monitoring** to demonstrate the significant potential of subnational action;
- ✓ **Place-based recommendations and a checklist for action** to inform policymakers by assessing policy and governance frameworks;
- ✓ **Dialogue and knowledge sharing** to conduct international policy dialogues and disseminate innovative policies and programmes applying a territorial approach.

Partnership

Over a period of 18-20 months, the programme will convene **4-6 countries** from diverse contexts to enable international peer learning. Each participating country will engage national ministries/agencies in charge of climate policies and of regional, urban and rural development, as well as **2-3 regions/cities** to actively participate in the programme.

The programme will be conducted jointly by the **OECD Regional Development Policy Committee**, through its Working Parties on Urban Policy and Rural Policy, and by the **OECD Environment Policy Committee**, through its Working Parties on Climate, Investment and Development and Biodiversity, Water and Ecosystems, as well as its Task Force on Climate Change Adaptation.

Programme Timeline



CONTACT

For more information about the programme, or to get involved, contact:

Tadashi Matsumoto, Head of Unit - Sustainable Development & Global Relations, CFE | Tadashi.Matsumoto@oecd.org

Aimée Aguilar Jaber, Programme Manager - Climate Change Mitigation, ENV | aimee.aguilarjaber@oecd.org

Catherine Gamper, Programme Manager - Climate Change Adaptation, ENV | catherine.gamper@oecd.org

About the programme

The OECD Programme *A Territorial Approach to Climate Action and Resilience* supports cities, regions and countries in their efforts to drive the zero-carbon transition and build systemic resilience across levels of government. The Programme is co-led by the City Division of the OECD Centre for Entrepreneurship, SMEs, Regions and Cities, and by the Climate, Biodiversity and Water Division of the OECD Environment Directorate.

 **Websites:** www.oecd.org/cfe
www.oecd.org/env

 **Twitter:** @OECD_local
@OECD_ENV