



# Non-City Based Economic Strategies: Messages from the Tees Valley

26 March 2012

Rachel Ford

Tees Valley Unlimited

# Topics

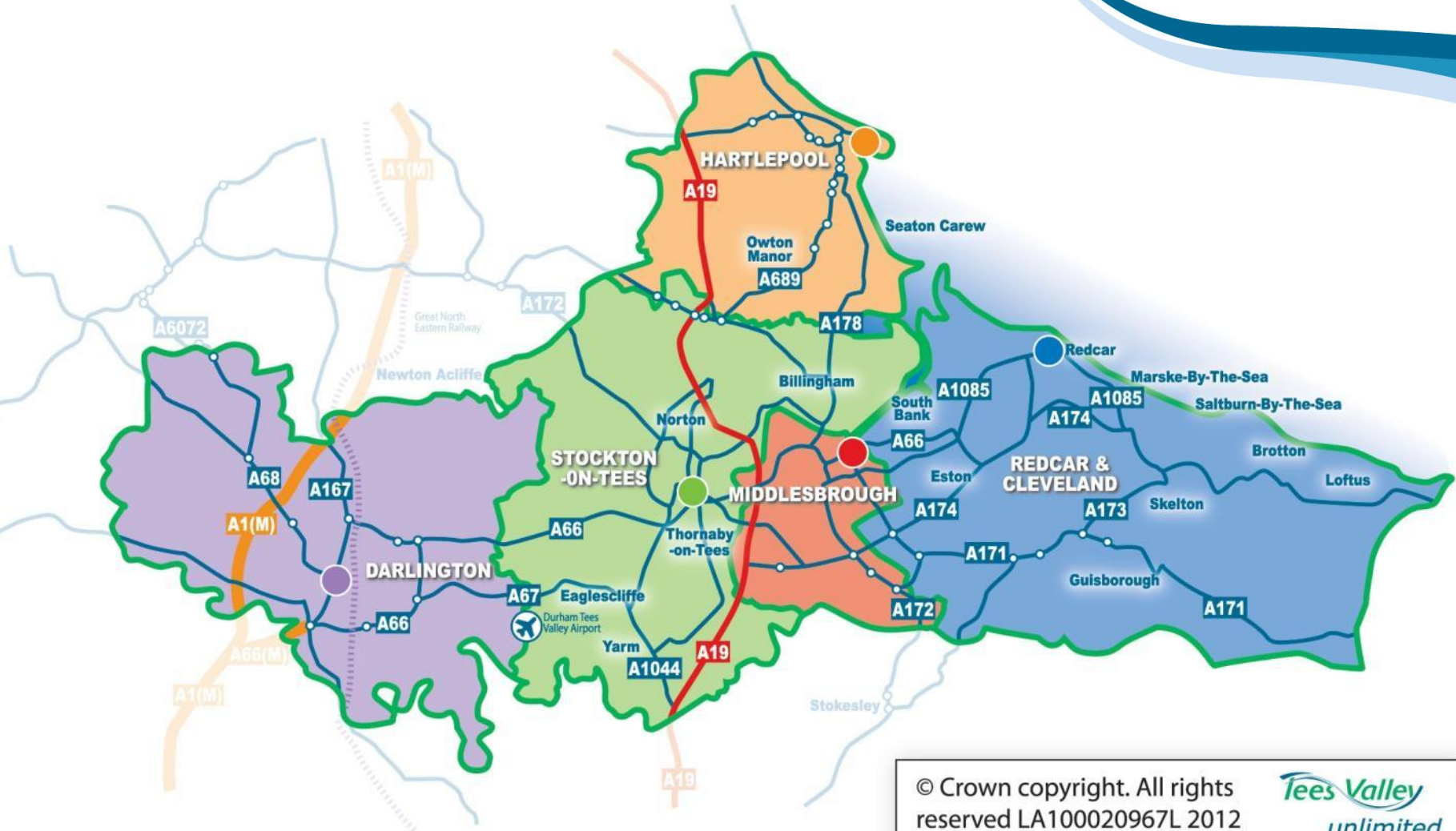
- The Tees Valley
- Tees Valley Unlimited
- The Tees Valley Economy
- Successes
- Key Challenges
- Driving Forward Economic Growth
- Reasons for Success
- Looking forward



- North East England
- Bordering North Yorkshire & Durham
- Covering an area of 304 square miles

- Encompassing Darlington, Hartlepool, Middlesbrough, Redcar & Cleveland and Stockton
- With a population of over 660,000

*Tees Valley*  
unlimited



# **Tees Valley Unlimited – Driving Forward Economic Growth**

- **Statement of Ambition**
  - **Ambition 1 – Transition into High Value Low Carbon Economy**
  - **Ambition 2 – Create a more Diverse and Inclusive Economy**
- **Business Plan**
  - **Objectives over 4 year period**
  - **Priority Actions over next 12-18 months**





# **What does economic growth mean in Tees Valley?**

# History of the Tees Valley economy

- Coal-mining
- Steel-making
- Ship-building
- North Sea Oil Production
- Processing
- Demise of heavy, smokestack industries and loss of ICI

# Current Situation...





**Demonstrating a commitment to the area and a belief in its potential...**



**Nifco UK  
Manufacturing  
£11million**

**Greenergy  
Green Energy  
£10million**

**Mitsubishi Chemical Corp  
Process Industry  
£15million**

**First Source  
Office  
£14.6million**

**KP Chemicals  
Process Industry  
£20million**

**Cummings Ltd  
Manufacturing  
£8.1million**

**SSI  
Manufacturing  
£320million**

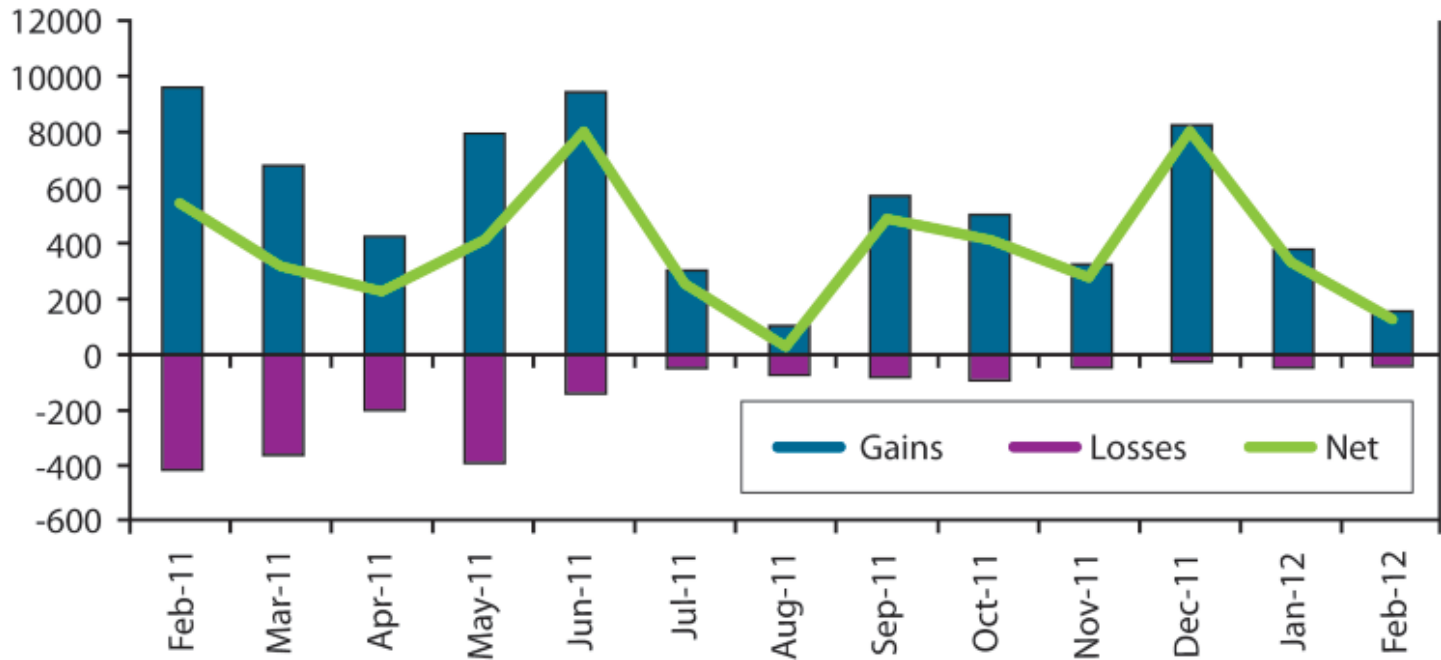
**GrowHow UK  
Manufacturing  
£9million**

**JDR Cables  
Offshore Wind  
£6.3million**

**Lotte Chemical UK Ltd  
Process Industry  
£62.5 million**

**Examples of private sector investment across last 36 months**

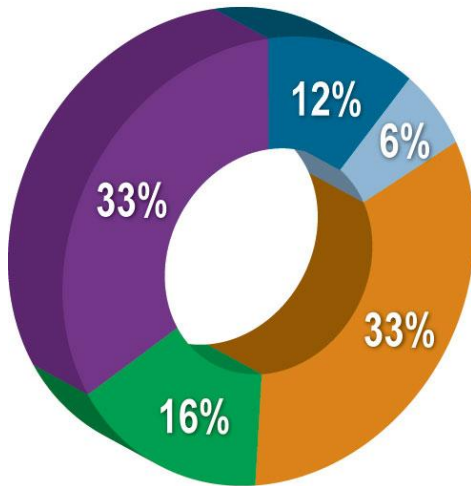
# Private Sector Job creation



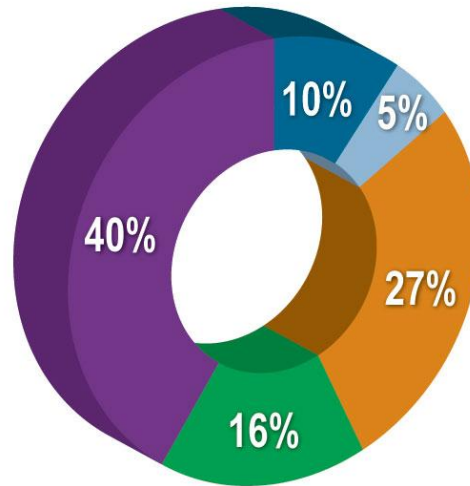
Source: Press Reports, 2011/12

# Employee Distribution

**Tees Valley**  
% of Employees

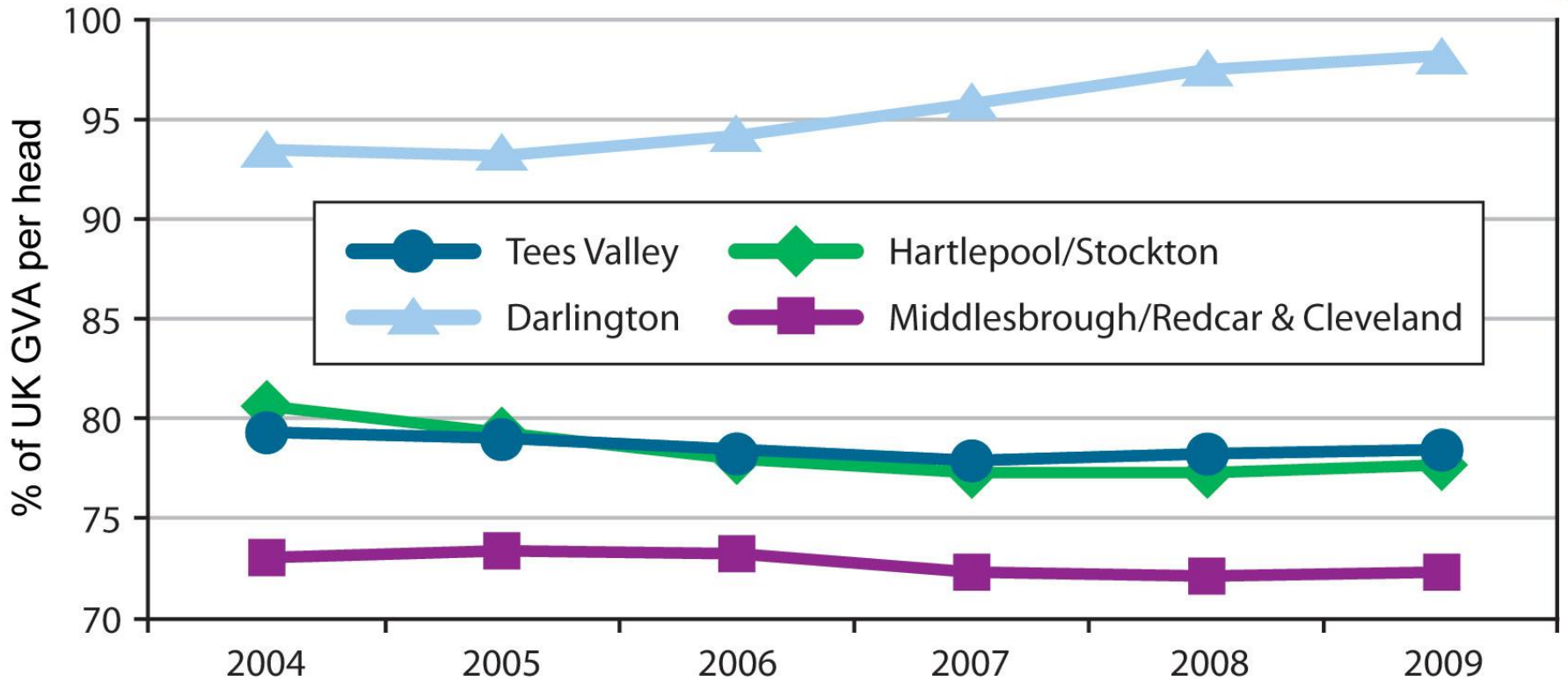


**Great Britain**  
% of Employees



- Production
- Construction
- Public Admin, Education & Health
- Retail
- Other Services (excl Retail)

# GVA



# Key Challenges

- Unemployment: 6.9% (4.1% nationally), youth unemployment 14.4%
- Access to finance
- Public sector austerity
- Private sector
- Enterprise
- Branch plant economy

The background is a solid teal color. A large, white, wavy graphic element is positioned in the upper half of the slide, resembling a stylized wave or a paper cutout. The text is centered within the white area.

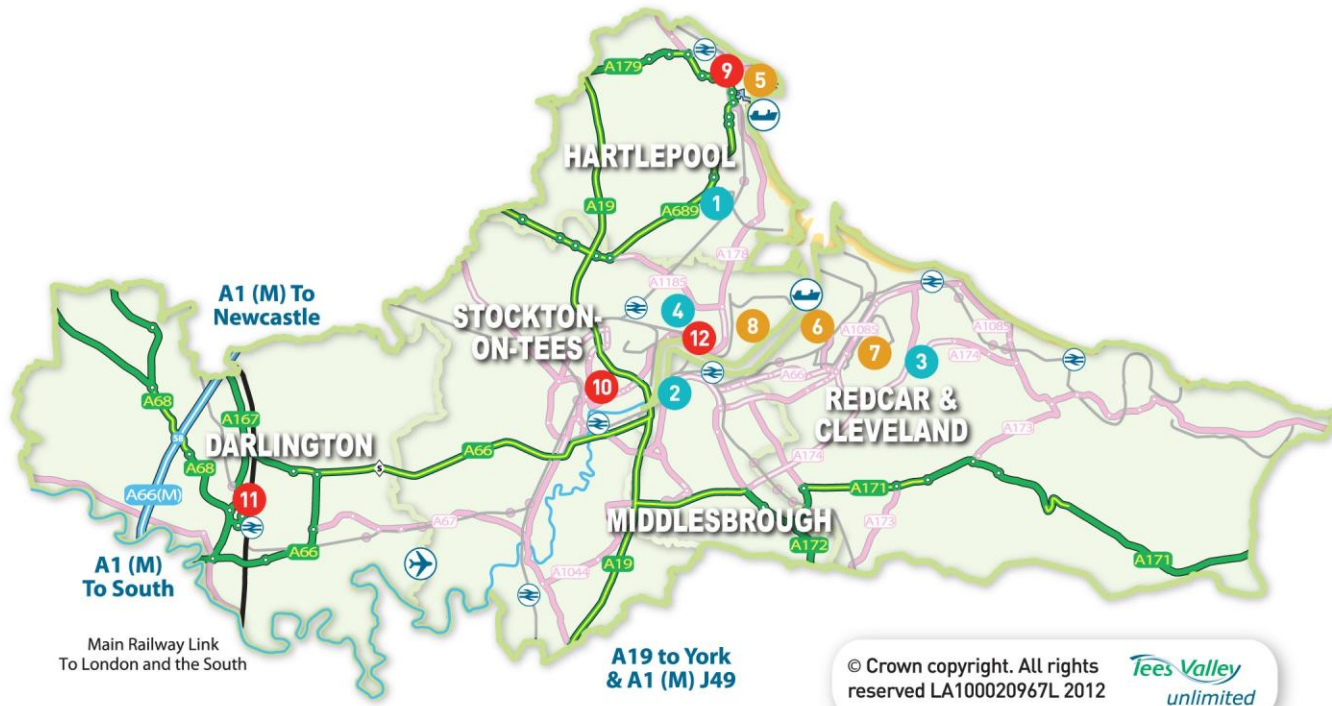
# **The Role of Economic Strategy in Growth**



# Driving Forward Economic Growth

- Regional Growth Fund Bids
- Relationship/Engagement with Business
- Sector Support
- Employment and Skills
- Growing Places Fund
- Removing barriers to growth and realising growth opportunities

# Tees Valley Enterprise Zone



## KEY

### Government Funded Enterprise Zone: Business Rate Discount Sites

- 1 Queen's Meadow Business Park
- 2 Teesside Advanced Manufacturing Park
- 3 Kirkleatham Business Park
- 4 Belasis Hall Technology Park

### Government Funded Enterprise Zone: Capital Allowances

- 5 Hartlepool Port Estates
- 6 South Bank Wharf: PD Ports/Tata
- 7 Wilton
- 8 New Energy & Technology Park

### Tees Valley Funded Zone: Business Rate Discount Sites

- 9 Oakesway Industrial Estate
- 10 NORTHSHORE
- 11 Central Park
- 12 St Hilda's

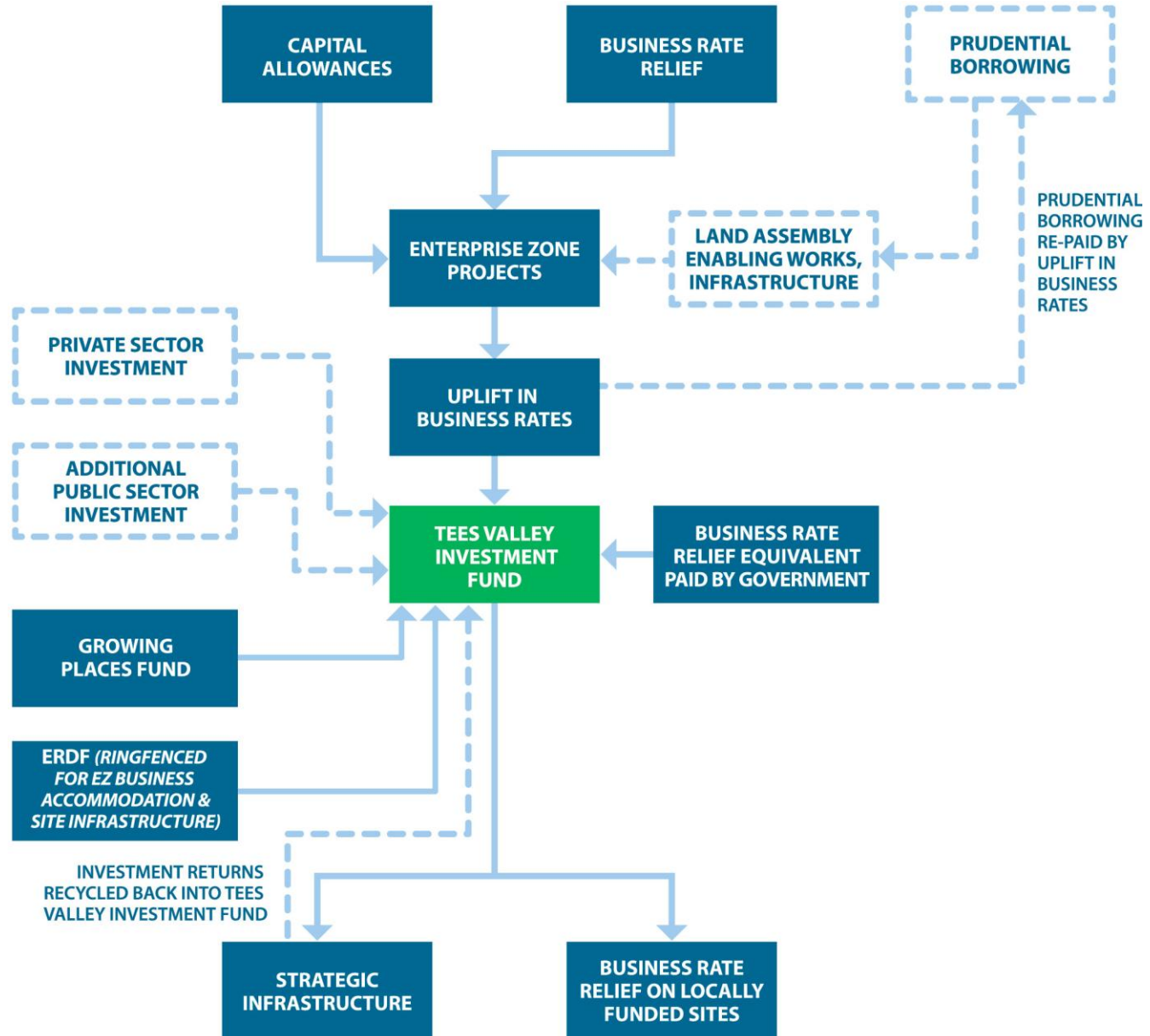
# Reasons for Success

- Strong leadership
- A proven track record
- 'Getting things done'
- Partnership working – Memoranda of Understanding
- Collaboration that adds value – not just where it is a requirement
- World class industries based in Tees Valley

# Enabling Future Growth

- Strategic infrastructure
- European Structural Funds 2014 – 20
- Employment and skills – local not national / integration
- The way we work together:
  - certainty over funding
  - devolution of funding and control
  - trust /less bureaucracy
  - relationships
  - achievement

# Tees Valley Investment Fund Model



# Looking forward

- TVU looks forward with confidence to a more prosperous future
- Despite tough times, the basis for such confidence lies in the composition, innovation and skill base of the world class industries in the Tees Valley
- TVU will continue to seize opportunities as they arise to help deliver greater economic prosperity through private sector investment and growth



**Rachel Ford**

**Economic Strategy & Intelligence Manager, TVU**

**Tel: 01642 524414**

**[rachel.ford@teesvalleyunlimited.gov.uk](mailto:rachel.ford@teesvalleyunlimited.gov.uk)**

**[www.teesvalleyunlimited.gov.uk](http://www.teesvalleyunlimited.gov.uk)**

The logo features the words "Lees Valley" in a green, italicized sans-serif font. A blue swoosh underline starts under the 'L', passes under the 'V', and ends under the 'y'.

*Lees Valley*

*unlimited*