

# Internationalising Parana, the role of universities: UFPR's Experience

**ZAKI AKEL-SOBRINHO, Rector, UFPR**

WG 2: Building internationally competitive regions:  
universities' role?

OECD Conference *Higher Education in Regional and City Development: For  
Fairer, Stronger and Cleaner regions*  
Seville, 10-11 February 2011

## PARANA IN THE WORLD

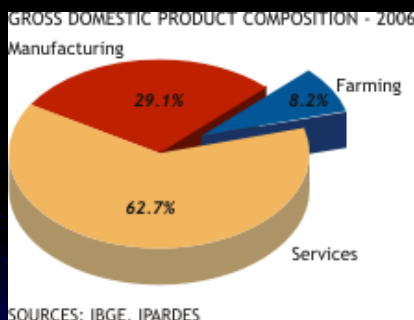


Capital City	CURITIBA (about 2 million inhabitants in Metropolitan area)
Area	(2/3) Italy
Paraná's Population (2007)	10,3 million (5.6% of Brazil)
Urban Population (2006)	84.5 %
GDP per capita	US\$ 7,378 (BR= US\$ 7,108)
GDP	US\$ (million) 77,387
SOURCES: SEMA-PR, IPARDES, IBGE, Human Development Atlas, Banco Central	

OECD/IMHE Higher Education in Regional and  
City Development, Seville February 2011

2

## PARANA'S GDP COMPOSITION - 2006



SOURCE: www.ipardes.gov.br

- Around 6% Brazilian GDP
- Metropolitan Curitiba
  - (35% Parana's GDP)
  - (53% Parana's Manufacturing GDP)
- Manufacturing
  - food and beverages; oil refinery; manufacturing and assembly of vehicles, **54%**
- Farming
  - poultry, pigs
  - sugar cane, corn, soybean, wheat

OECD/IMHE Higher Education in Regional and City Development, Seville February 2011

3

## PARANA 2008 HIGHER EDUCATION FIGURES

	Institutions		Undergraduate Enrolment	
<b>PARANA</b>		178	<b>329.741</b>	
<b>Public</b>	<b>12%</b>	<b>22</b>	<b>111.498</b>	<b>36%</b>
Federal		2 (+ 2 new)	33.470	
State		17	74.970	
City		3	3.058	
<b>Private</b>	<b>88%</b>	<b>156</b>	<b>218.243</b>	<b>64%</b>
Particular		127	172.353	
Community or Philanthropic		29	45.890	

Source: Higher Education Census, INEP/MEC

OECD/IMHE Higher Education in Regional and City Development, Seville February 2011

4

- **Increasing participation in the World Economy**

- Agribusiness
  - International Standards
- Metropolitan-Industrial
  - High Technology Sectors
- Increasing Demand
  - Qualified Human Resources

- **HEI's Reaction**

- Since the seventies
  - Internationalisation linked to graduate programs
  - Public Universities
- Last 10 years increasing efforts
  - Creation of specific branch for international affairs
    - UFPR 2003
  - Mobility program for undergraduate students

OECD/IMHE Higher Education in Regional and  
City Development, Seville February 2011

5

## **UFPR - International Cooperation Management for Mobility**

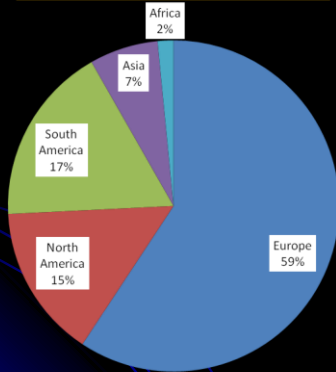
- Graduate (complementary to national agencies:, Capes, CNPq)
  - International research project with joint supervision
  - International research group creation
- Undergraduate
  - Financial support for outstanding students
    - From UFPR's budget
  - Double and joint degrees programs
- Support for UNILA (Latin America Integration University)
  - New Federal University in Foz do Iguaçu created in 2010
  - Target = 50% teachers and students from Latin America

OECD/IMHE Higher Education in Regional and  
City Development, Seville February 2011

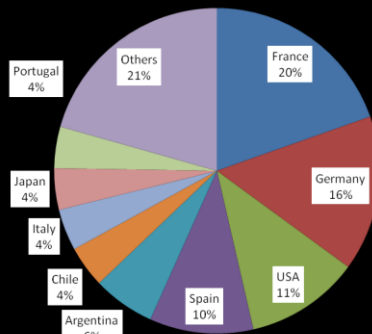
6

# UFPR's International Agreements

UFPR International Agreements by Continent (194)



UFPR International Agreements by Country



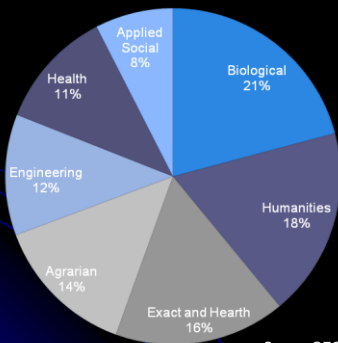
Source: UFPR International Affairs Office

OECD/IMHE Higher Education in Regional and City Development, Seville February 2011

7

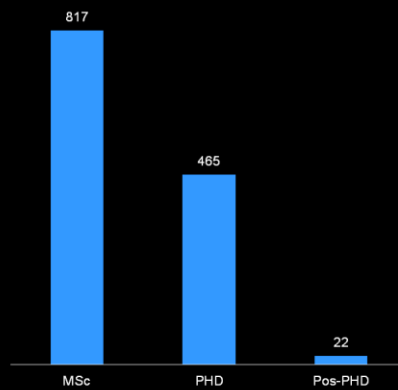
# Fellowships from CAPES UFPR 2009

By Areas



Source: GEOCAPES

Number by Level



OECD/IMHE Higher Education in Regional and City Development, Seville February 2011

8

## UFPR - Number of undergraduate students on the mobility program in 2010

- **Number of UFPR Students under mobility: 200**
  - 40 UFPR own budget ( around US\$330,000)
- **Number of foreign students at UFPR: 100**
- **Type of mobility:** regular exchange program, Erasmus Mundus, Santander Scholarship, Double-Degree, BRAFITEC, BRAFAGRI, UNIBRAL, FIPSE, COFECUB.

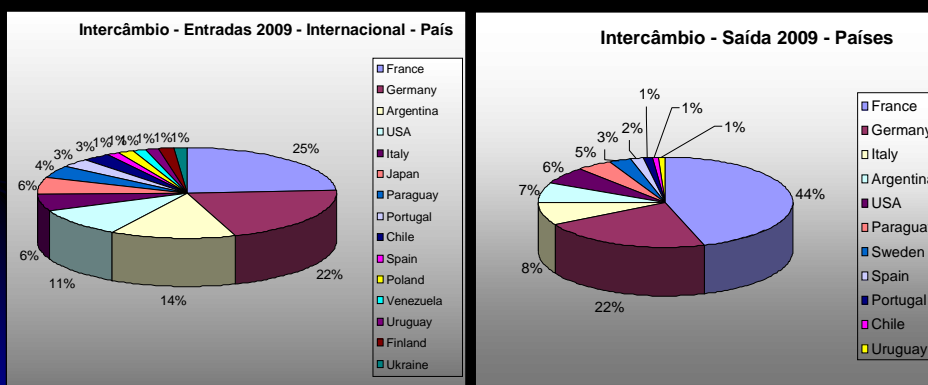
OECD/IMHE Higher Education in Regional and City Development, Seville February 2011

9

## UFPR – Mobility by country Undergraduate 2009/2010

Students received from

Students sent to



Source: UFPR International Affairs Office

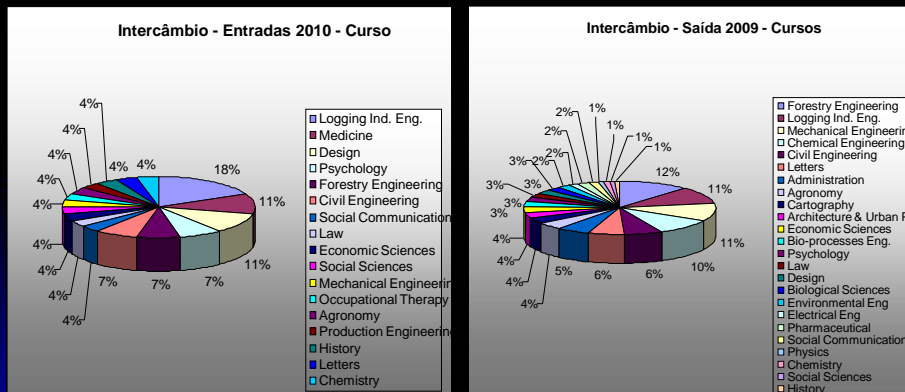
OECD/IMHE Higher Education in Regional and City Development, Seville February 2011

10

## UFPR – Mobility by area Undergraduate 2009/2010

### Students received from

### Students sent to



Source: UFPR International Affairs Office  
OECD/IMHE Higher Education in Regional and  
City Development, Seville February 2011

11

## Universities creating Universities or Tutoring UNILA

- **UN**iversity for **I**ntegration of **L**atin America
  - Foz do Iguassu
  - Brazil-Paraguay-Argentina border
  - Bilingual to foster integration
- Latin America and the Caribbean
  - 500 faculty members
  - 10.000 alumni
  - Half brazilian and half other latin americans

## Tutoring **UNILA** Undergraduate Degrees

- Antropology
- Agricultural Development and Nutrition Safety
- Biology
- Economics
- Engineering of Infrastructure
- Engineering of Renewable Energy
- Human Geography
- History
- International Relations and Integration
- Language
- Natural Sciences
- Political Science and Sociology