

# The Multi-Dimensional Integration Index (MDI)

*16 January 2018*



# RATIONALE FOR DEVELOPING THE TOOL

HALL.



76% of Afghans have had an experience of displacement.  
1 in 4 Afghans has had an experience of international migration.

(Re)Integration is the objective of many programming efforts, in Afghanistan and elsewhere. But what is integration?



*“A process that should result in the **disappearance of differences in local rights and duties** between returnees and their compatriots, and equal access to services, productive assets and networks.”*

How to measure progress towards achieving integration?



A standardized framework to understand and map integration processes of displaced and returnee populations, and an attempt at a consolidated data collection system.

# A STANDARDIZED FRAMEWORK, AN INTER-AGENCY APPROACH

HALL.

- No harmonized standard to measure how the displaced fare after the emergency phase of displacement. Partners (RWG) recommended to:
  - Consider standards at national and international levels
  - Make more efforts to combine indicators
  - Take
- Goal: Baseline data on the integration of displaced and returnee groups to inform and measure the impact of programming - **Applied with global (IASC) and academic standards!**
- The first attempt at a consolidated data collection system on integration / reintegration. Responds to donor requests for scientific, standardized data. A global push for using index-based programming.
- Inter-agency collaboration: The Government, the United Nations and NGOs agreeing on a standardized tool.
- COLLECTIVE data collection mechanism, allowing for an integrated and systematic approach to understanding integration in Afghanistan.

# MDI DIMENSIONS AND INDICATORS

HALL.

Economic dimension	Social dimension	Safety / security dimension
Refrigerator ownership	Tazkera possession	Possible sources of financial assistance
Car ownership	Possible sources of financial assistance	Last occasion of reduced food intake
Bank account	Literacy	Migration intentions and expectations
Electricity	Distance to healthcare	Perceived safety in daily life
Piped water	Social activities	Perceived tenure security
Remittances	Psychological state	Existence of a support network
Income from agriculture	Perceived safety in daily life	Self-perceived access to employment
Income from trade	Perceived tenure security	Earners redundancy
Income from aid	Political participation	
Debt to spending ratio	Existence of a support network	
Self-assessment of relative economic situation	Domestic conflict	
Possible sources of financial assistance		
Last occasion of reduced food intake		
Professional skills		
Self-perceived access to employment		
Earners redundancy		

Does your household currently hold more debt than it spends in a month?

Does at least one member of your household have a tazkera or a birth certificate?

I feel secure that my household can remain in this dwelling for as long as we wish

Does any member of your household have a bank account?

Someone in the household could get a job if he/she wanted one ...

If you needed financial help, which of the following sources of credit (if any) could you turn to?

If there is a conflict or I am threatened, I can go to the police or the courts for help

# SUBJECTIVE AND OBJECTIVE INDICATORS

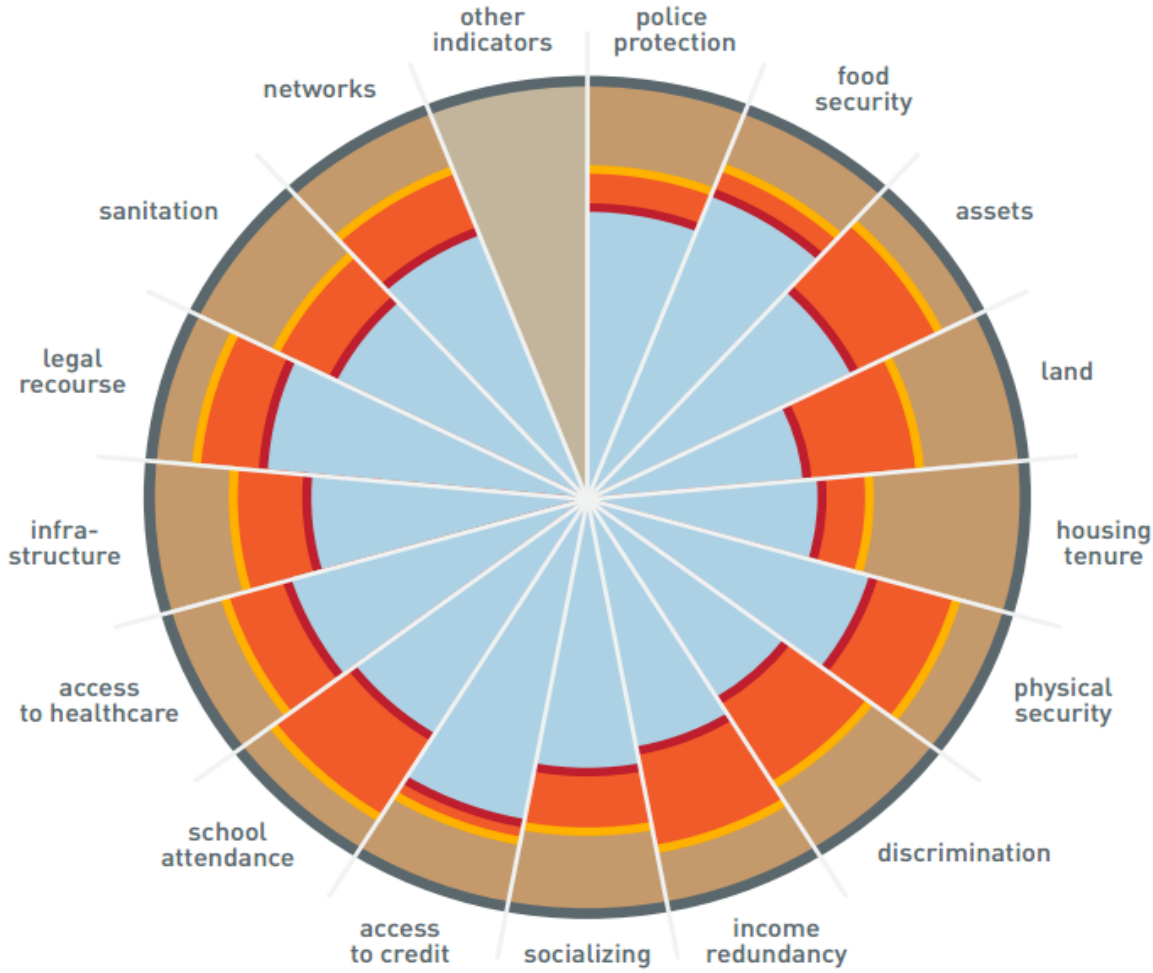
Reintegration is also a question of perception:

*How does the household situate itself within the community?*

- Economic dimension
  - ✓ Perceived economic situation compared to others
  - ✓ Could someone in this household find a job ?
  
- Social dimension
  - ✓ Symptoms of trauma and stress
  - ✓ Domestic conflict
  
- Safety / security dimension
  - ✓ Perceived safety at home and outside
  - ✓ Perceived tenure security



# HOW ARE WE MEASURING?



**Blue** arcs represent the best possible conditions for a given indicator.

The **yellow** arcs: the conditions of the host community at large.

The **brown** area: the shortfall of the entire community.

The **orange** areas: migrant-specific deprivation. The MDI provides a measure of these deprivations.

# THE TARGET POPULATION

HALL.



For the baseline, in each location,

- 100 host households
- 300 displaced households (refugees, returnees, IDPs, economic migrants...)

For follow-up assessments, displaced households only.

Households are randomly sampled in a given **community**.

The community must be defined through access to services, social and economic habits rather than just physical location.



**Contextual knowledge is key!**



# SAMPLING

HALL.

**Two different sampling strategies** were tested:

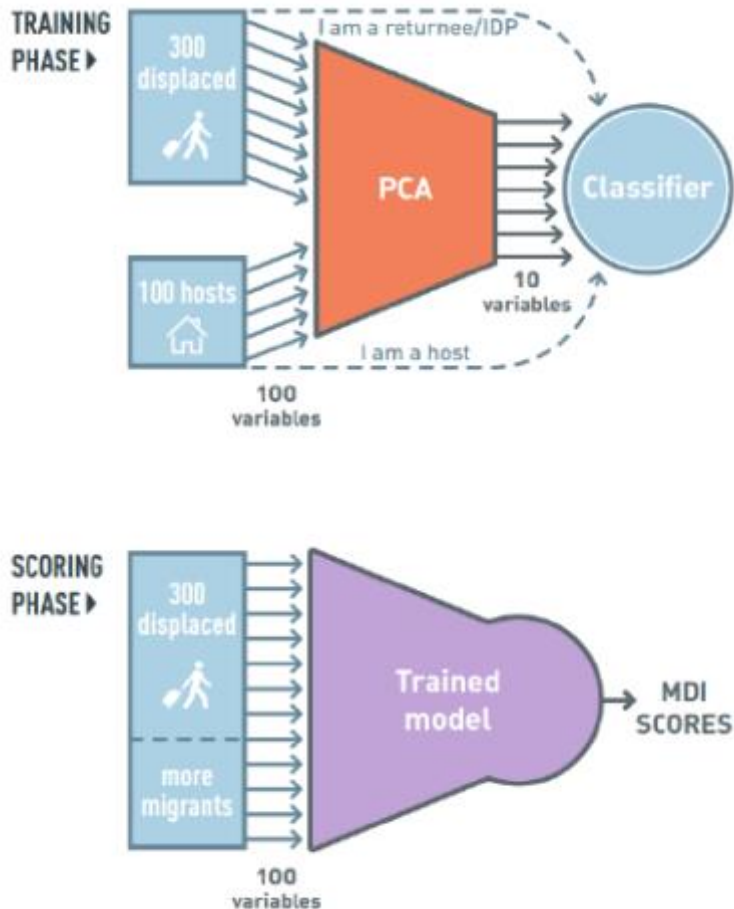
- 1. Separate settings:** In Kabul, returnees were interviewed in neighbourhoods largely inhabited by returnees while hosts were interviewed in locations with a large share on non-displaced residents.
- 2. Identical settings:** In the second and third pilots, locations mostly inhabited by returnees were selected, and resident returnees as well as host respondents were sought out for the survey.

**Lesson learned: The second approach mutes differences between host and returnee populations.**



# CALCULATION OF INTEGRATION SCORES

HALL.



1. Principal Component Analysis is used to reduce the number of variables by selecting an optimal set of components consisting of weighted sums of the original variables.
2. These principal components are then used to compute a logistic regression classifier to estimate the similarity between displaced households and the host archetype.
3. The resulting parametrized model can then be used to score additional displaced households within the same community

The resulting scores are numbers between 0 and 1, reflecting the degree of similarity between the individual respondent households and the host archetype in their community of residence.



## FAQ

HALL.

Can comparative conclusions be drawn between locations?



*Yes. PCA is a standardized computation.*

Can the question set still be amended?



*Yes, and it should be. Changes should be incremental.*

Can different types of displaced populations be compared?



*Yes. In the training phase, the model only compares hosts to non-hosts. The resulting baseline can be used for all types of displacement.*

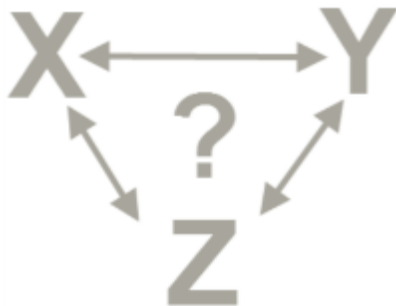
# WHAT DRIVES INTEGRATION?

HALL.

## Proposed prioritization criteria

- 1) Beneficiary categories (refugee returnees, undocumented returnees, group returns, host communities);
- 2) Vulnerability criteria, re-integration levels;
- 3) Geographic location (high-return area, urban versus rural, areas with high vulnerability, areas of high out-migration);
- 4) Years in exile, year of return.

Draft Afghanistan Unified Action Plan (2015 – 2020) - Solution Strategy for Afghan Refugees (SSAR) and Comprehensive Voluntary Repatriation and Reintegration Strategy (CVRRS), 12 July 2016

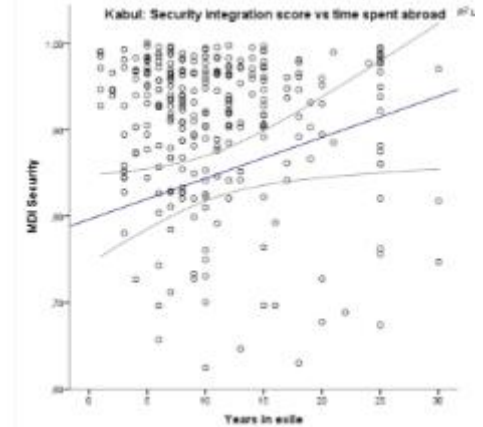
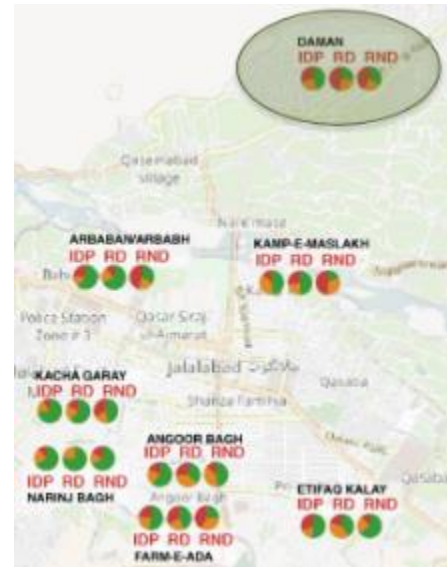
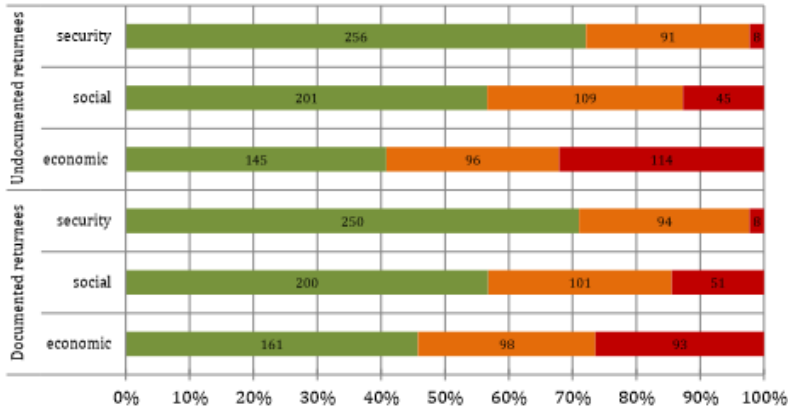


# WHAT DO THE RESULTS LOOK LIKE?

HALL.

	Pilot 1 (SH)		Pilot 2 (NRC)			Pilot 3 (DRC)		
	Kabul	Urban	Herat	Jalalabad	Kandahar	Abade	Babali	Monarar
Number of displaced	150	165	286	279	286	153	289	143
Number of hosts	52	51	111	104	104	87	95	68
MDI economic mean	0.681	0.836	0.911	0.890	0.906	0.836	0.884	0.733
MDI social mean	0.771	0.779	0.842	0.826	0.904	0.835	0.816	0.765
MDI security mean	0.868	0.827	0.860	0.886	0.879	0.901	0.685	0.774
MDI average mean	0.773	0.814	0.871	0.867	0.897	0.857	0.795	0.758

	Pilot 4 (AKF)			Pilot 5 (NRC)					
	Baghlan		Takhar	Jalalabad					
	Doshi	Puli Khumri	Dasti-e-Qala	Taloqan	Urban	Peri-Urban	Returnee	IDP	
Number of displaced	206	279	102	152	280	314	197	393	173
Number of hosts	92	79	88	95	144			237	
MDI economic mean	0.899	0.829	0.859	0.807	0.928	0.833	0.872	0.860	0.878
MDI social mean	0.912	0.787	0.914	0.923	0.912	0.891	0.92	0.895	0.916
MDI security mean	0.902	0.799	0.910	0.909	0.919	0.915	0.926	0.916	0.917
MDI average Mean	0.904	0.805	0.890	0.880	0.920	0.879	0.906	0.890	0.903



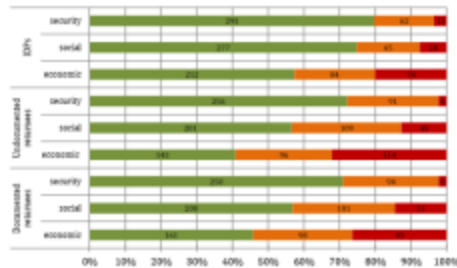
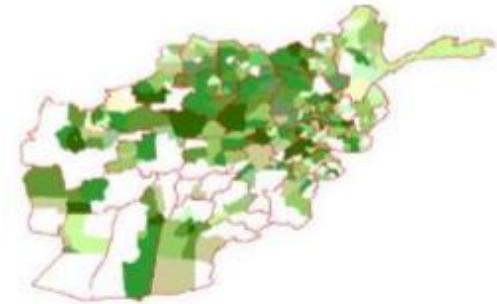


# WHAT DID WE LEARN?

HALL.

## ✓ Geographic disparities

The needs of the displaced are not identical across locations → blanket targeting is not a solution.



## ✓ Disparities in terms of beneficiary categories

Deportees fare worst. The impact of voluntary returns packages was significant in Kandahar and Herat, but negligible in a context of massive recent returns to Jalalabad.

## ✓ Disparities between rural, urban and peri-urban areas

Economic integration tends to be higher in the cities, safety integration tends to be higher in the outskirts.





## WHAT ELSE DID WE LEARN?

HALL.

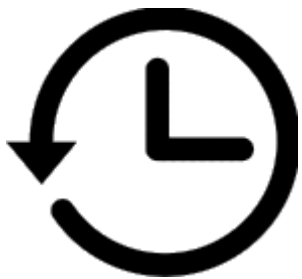


### ✓ Home sweet home

Returning to one's place of origin has a significant positive impact, particularly in the social and security dimensions.

### ✓ Vulnerability

Vulnerable returnee and IDP households in Jalalabad exhibit significantly lower integration scores, particularly in the social and security domains.



### ✓ Years in exile, years since return

The effect differs between locations. Security scores in Kabul tend to rise with time spent abroad, while those in Herat tend to drop. Social integration is positively correlated with time since return in Kabul.

# APPLICATIONS OF THE MDI:

HALL.

## Programming

- Linking the MDI to tailored geographic interventions
- Using the MDI to design packages
- Examine the relative importance of indicators on integration



## Monitoring

Verify to which degree organizations's programming has impacted integration of beneficiaries in their local communities.



## Policy making

- Collecting comparative evidence, improving coordination
- Confirming assumptions, supporting advocacy



# NEXT STEPS: A COLLECTIVE EFFORT



- Data collection by partners on the ground, with UNHCR at the forefront of roll-out across ten locations in 2018



- Establishing comparable baselines across Afghanistan



- Data and MDI scores uploaded to the centralized database to be shared with the partners



- Results published on a dedicated website



- Visuals to map different migrant / displaced communities. By zooming in on locations, viewers will be able to see scores mapped against drivers of interest.

**Synergies instead of duplication of efforts!**

**Easily accessible data for all**

**Value for money**



# THANK YOU

HALL.

Stefanie BARRATT  
[Stefanie.barratt@samuelhall.org](mailto:Stefanie.barratt@samuelhall.org)

