

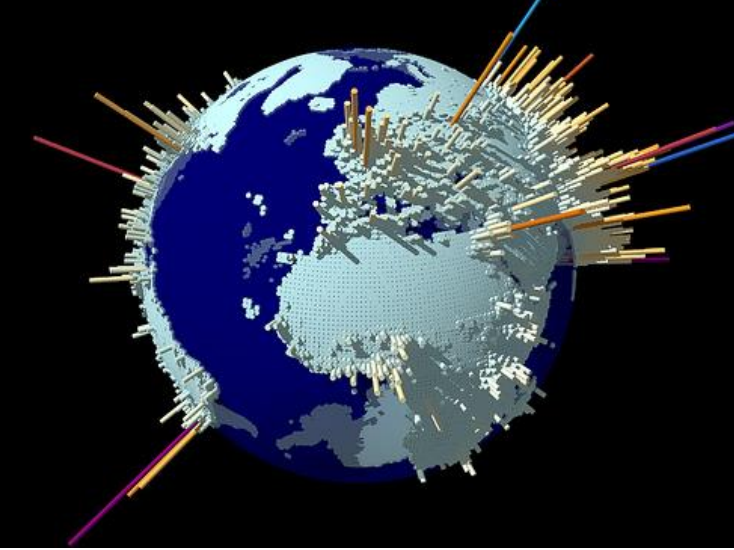


Migration in Population Statistics and Forecasts – Challenges and Uncertainties

Rainer Muenz
EPSC

Knomad Session
Improving Migration, Remittances and diaspora data

Paris, January 16, 2018



The Data Situation



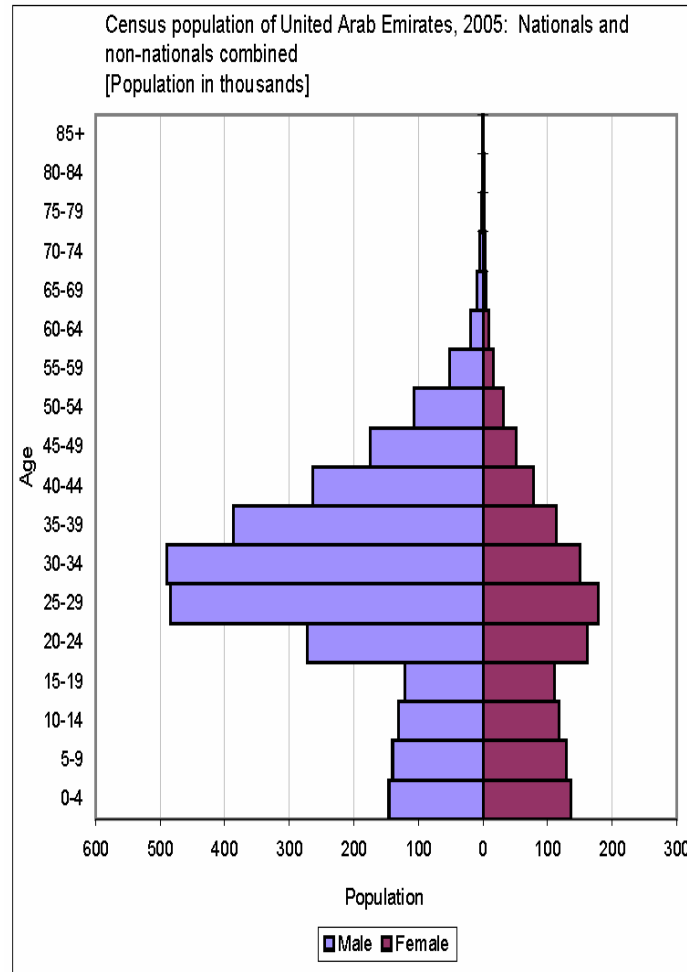
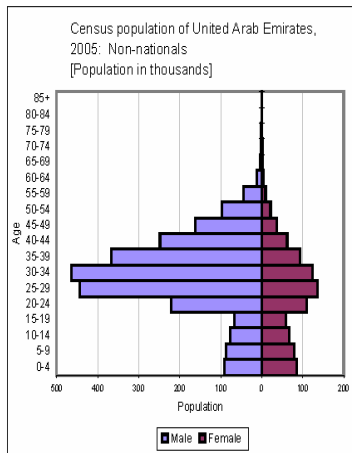
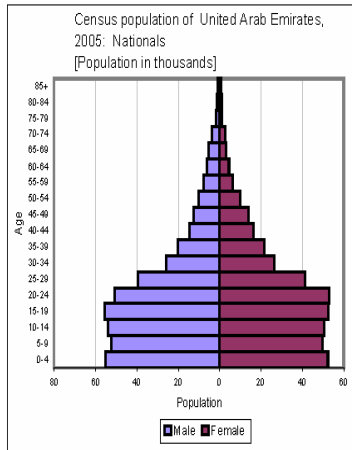
What migration data do countries produce and provide?

- **No data**
- **Residual data (= net migration calculated via a residual method)**
- **Partial information; only immigration data (w. details); asylum claims; residence permits**
- **Gross migration data (immigration + emigration); absolute numbers; ideally by age and gender**

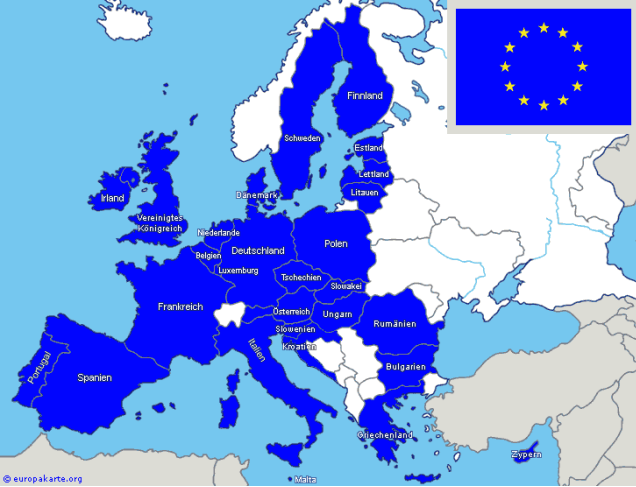
Demographers then have to rely on data published by

- **UN Pop Div,**
- **OECD**
- **US Census Bureau**

Why it makes sense to have good data on immigrants (or emigrants): an extreme case



- ## United Arab Emirates:
- Native population
 - Labor migrants
 - Total population



Even within the EU data on migration are not collected and processed in a uniform way

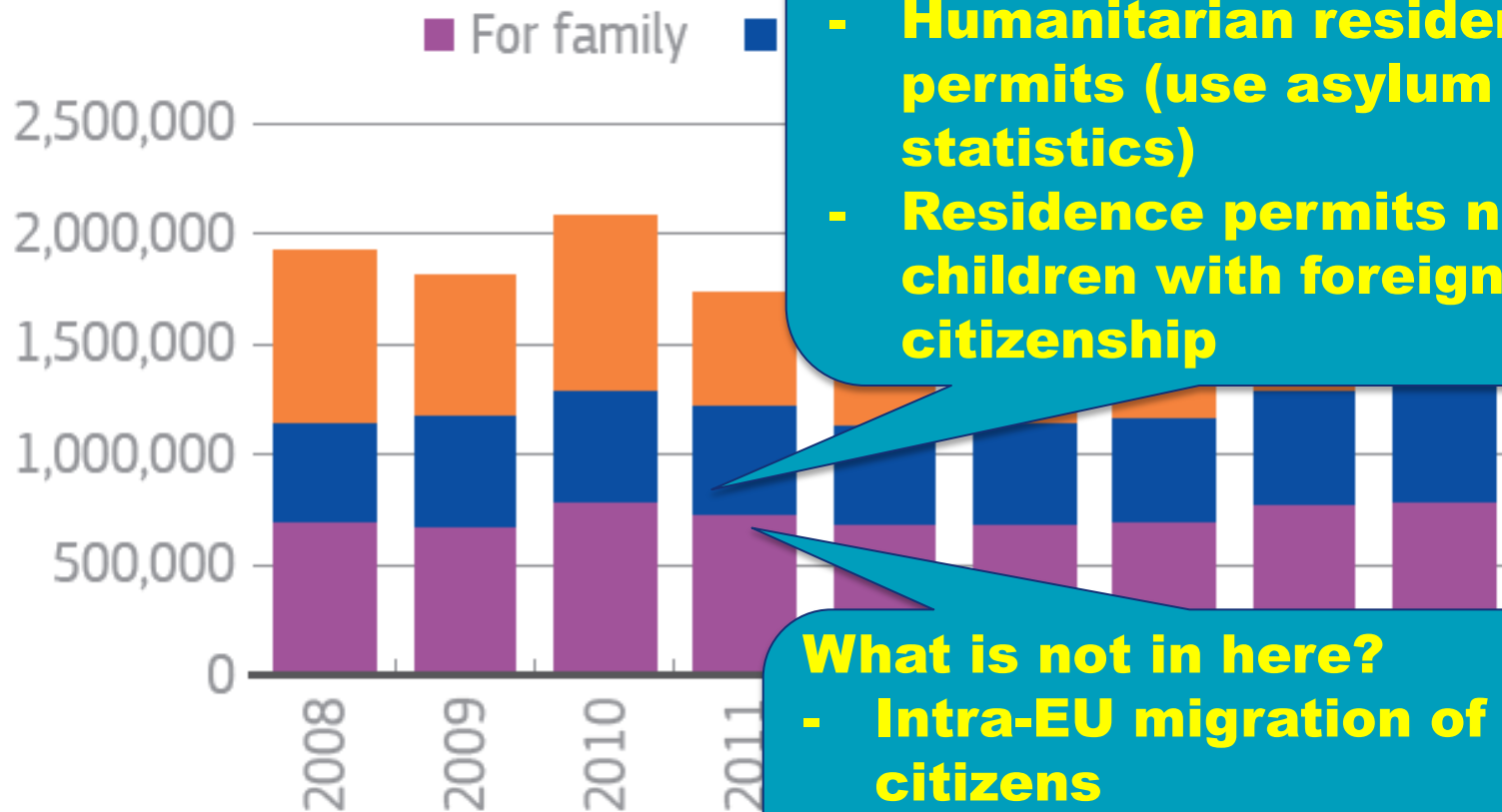
- **Population register / electronic census**
- **Systematic individual registration system / door-to-door census**
- **Incomplete registration**
- **No register / registration**

Even for the past: size and direction of flows unclear

European countries with the largest positive and negative net migration balances 2005-2009

| Rank | Country | EUROSTAT | USCB | UNPD | WiC |
|------|----------------|-----------|-----------|-----------|-----------|
| 1 | Romania | -904,615 | -32,058 | -46,342 | -100,000 |
| 2 | Lithuania | -145,981 | -12,801 | -166,978 | -36,000 |
| 3 | Belarus | -145,678 | 32,671 | 52,266 | -51,000 |
| 4 | Poland | -85,558 | -88,979 | -60,268 | 55,000 |
| 5 | Latvia | -84,549 | -25,675 | -89,138 | -10,000 |
| 6 | Bulgaria | -53,329 | -135,993 | -80,423 | -50,000 |
| 7 | Armenia | -31,776 | -92,399 | -139,099 | -75,000 |
| 8 | Albania | -28,818 | -145,067 | -170,893 | -48,000 |
| 9 | Estonia | -17,556 | -21,187 | -13,612 | 0 |
| 10 | Moldova | -14,854 | -196,149 | -183,069 | -172,000 |
| 10 | Czech Republic | 232,025 | 255,036 | 297,005 | 240,000 |
| 9 | Sweden | 249,653 | 250,997 | 263,075 | 265,000 |
| 8 | Belgium | 288,023 | 63,487 | 342,395 | 200,000 |
| 7 | Switzerland | 301,164 | 224,792 | 338,020 | 182,000 |
| 6 | Turkey | 361,867 | 224,053 | -79,266 | -49,000 |
| 5 | France | 490,483 | 415,630 | 593,334 | 500,000 |
| 4 | Russian Fed. | 1,055,101 | 1,479,888 | 2,471,475 | 1,135,000 |
| 3 | Italy | 1,364,695 | 1,747,460 | 1,993,177 | 1,999,000 |
| 2 | United Kingdom | 1,369,091 | 961,339 | 928,982 | 1,021,000 |
| 1 | Spain | 2,645,920 | 2,496,953 | 2,416,659 | 2,250,000 |

Estimated annual gross immigration to EU28 based on first residence permits by reason of entry, 2008-2016, absolute numbers



What to leave out:

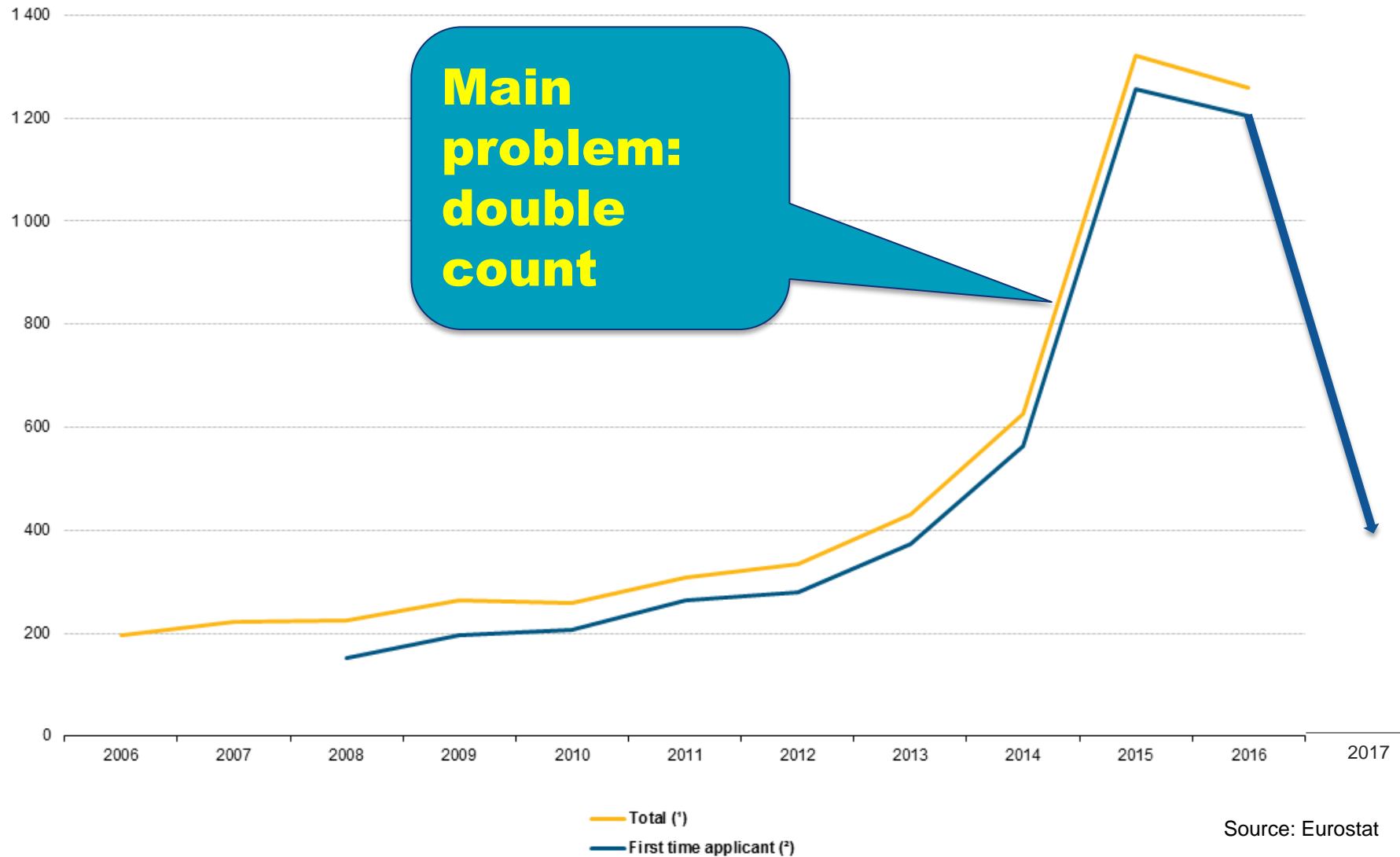
- Humanitarian residence permits (use asylum statistics)
- Residence permits newborn children with foreign citizenship

What is not in here?

- Intra-EU migration of EU citizens
- Privileged immigration/return migration of EU citizens (e.g. German Aussiedler)

Asylum in Europe

Asylum applications in the EU 28, 2006-2016

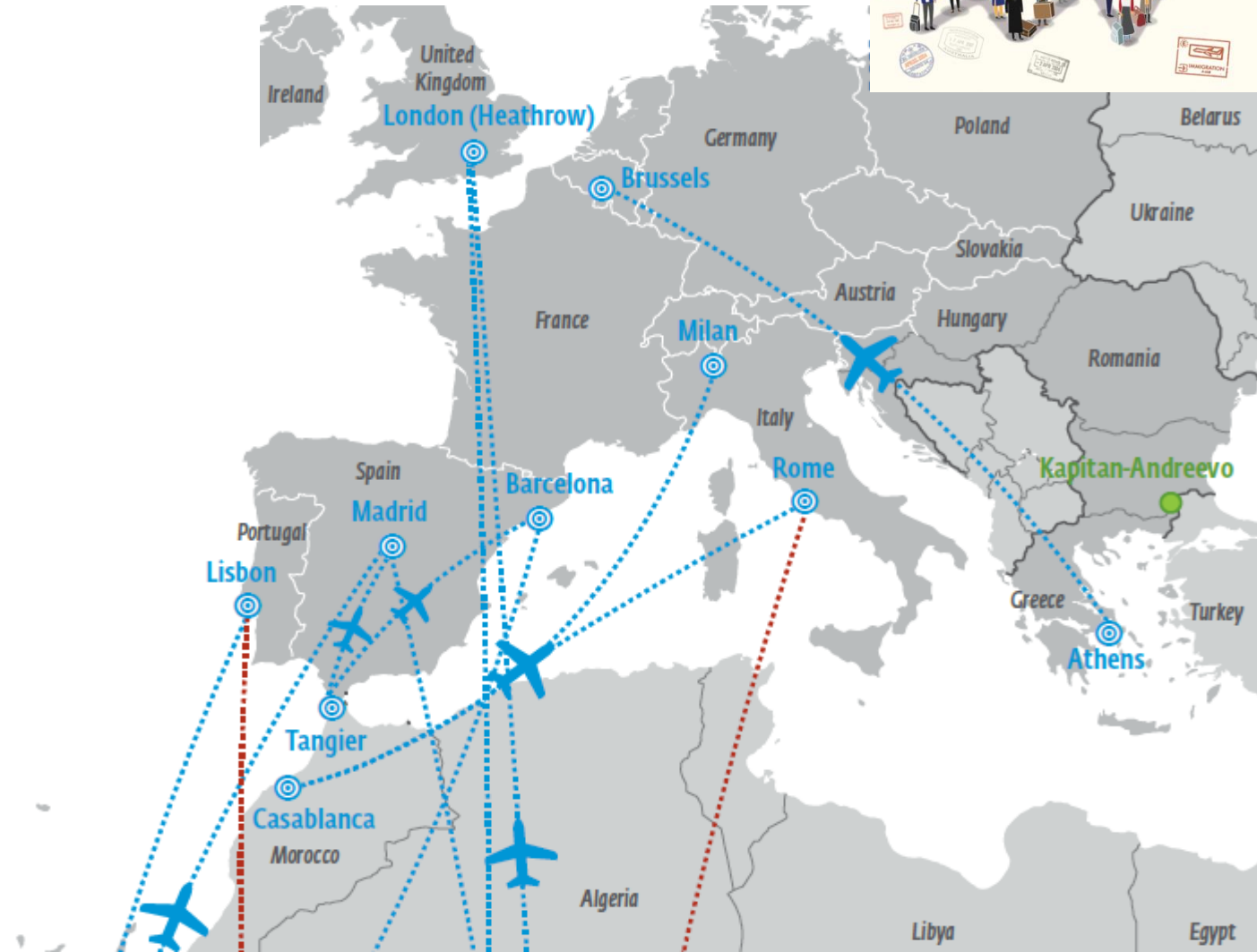


Alternative source: Irregular migrants and refugees disembarked in Italy, Greece, Spain and Cyprus, 2017



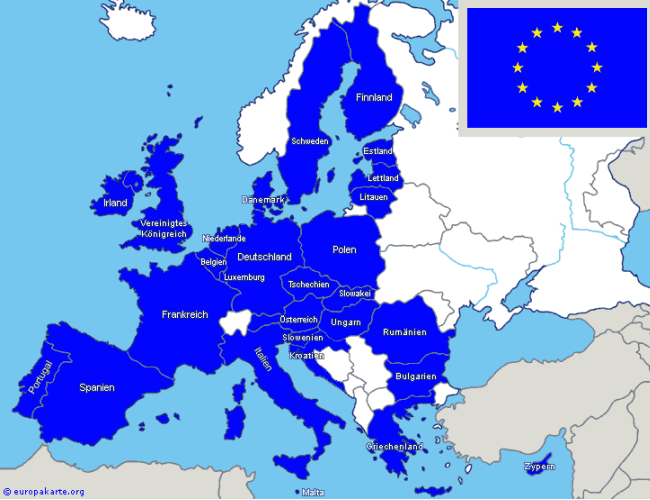
Source: Frontex, UNHCR, DG Home

A big unknown: „normal“ irregular immigration to Europe by „overstayers“ The example of Western Africa



$$12(34 + 56 - 78) / 9 =$$

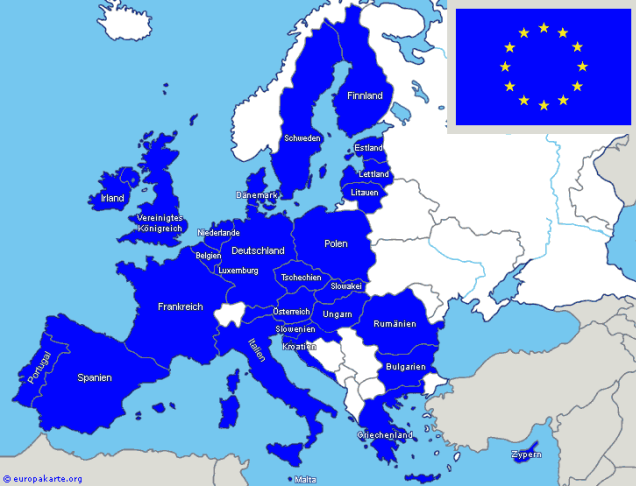
Tricky Realities



- **Immigration better documented than emigration**
- **Political interests to downplay emigration and to oversell immigration**
- **Legal / registration / tax status of people with more than one residence badly reflected in statistics on population and migration**



Agenda



- **Better migration data**
- **“Hybrid” data via systematic linking of different sources**
- **Getting rid of net migration as a convenient “work around”**
- **Improving population forecasts by giving more emphasis to the modelling of migration**



Core question:

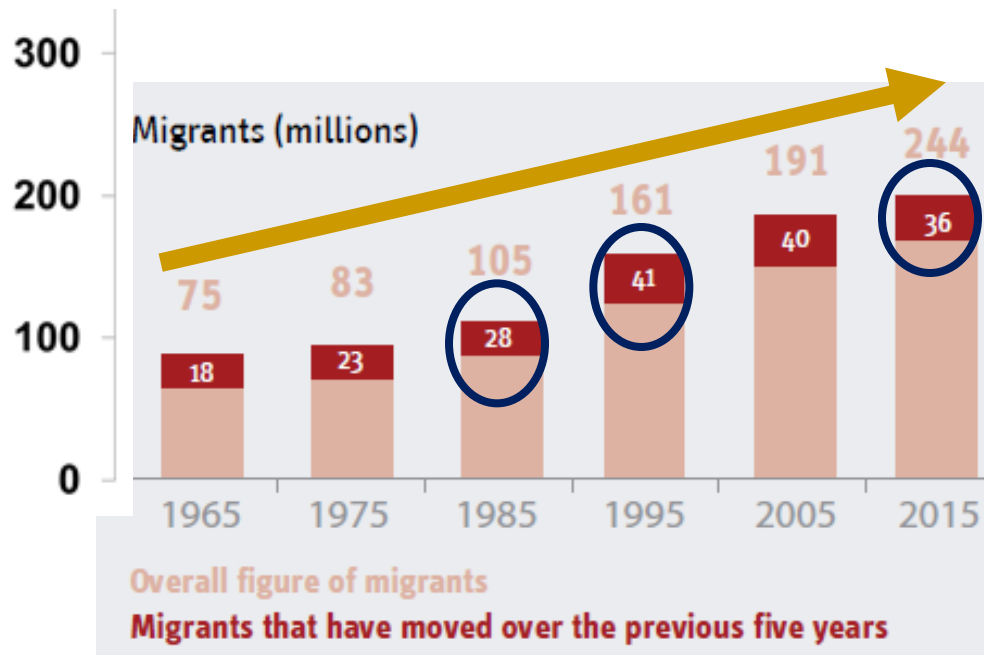
**What future levels of
international migration are
to be expected?**

Same, more, less?

Direction?

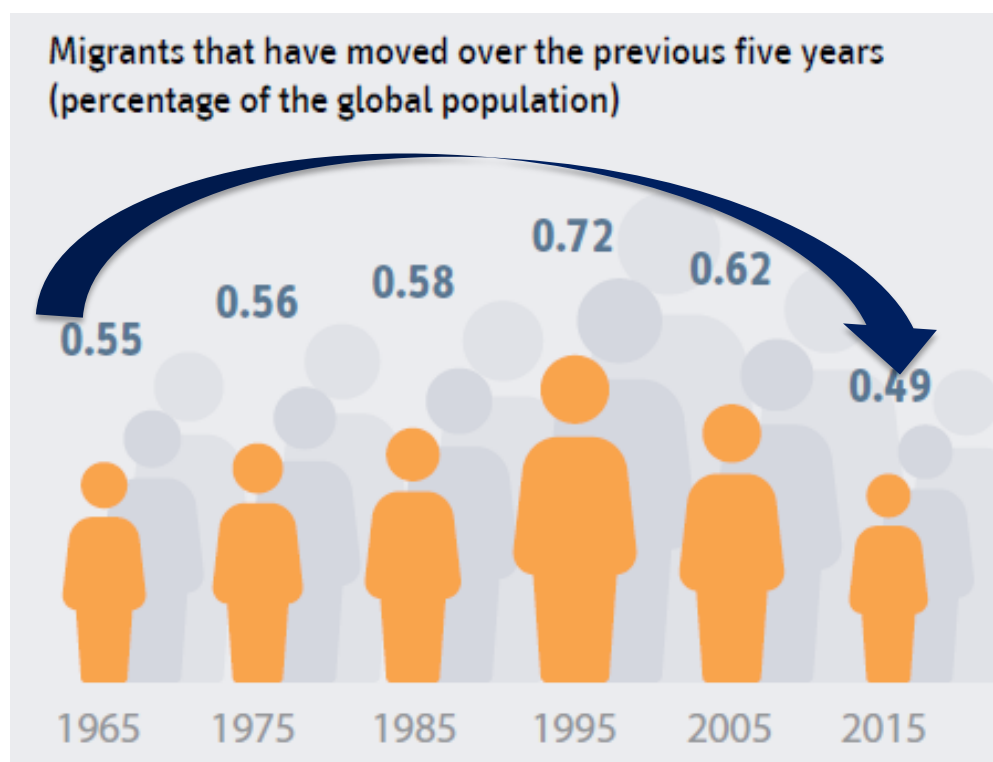
The number of people living outside their country of birth (migrant stock) is growing, the flow of migrants is not growing

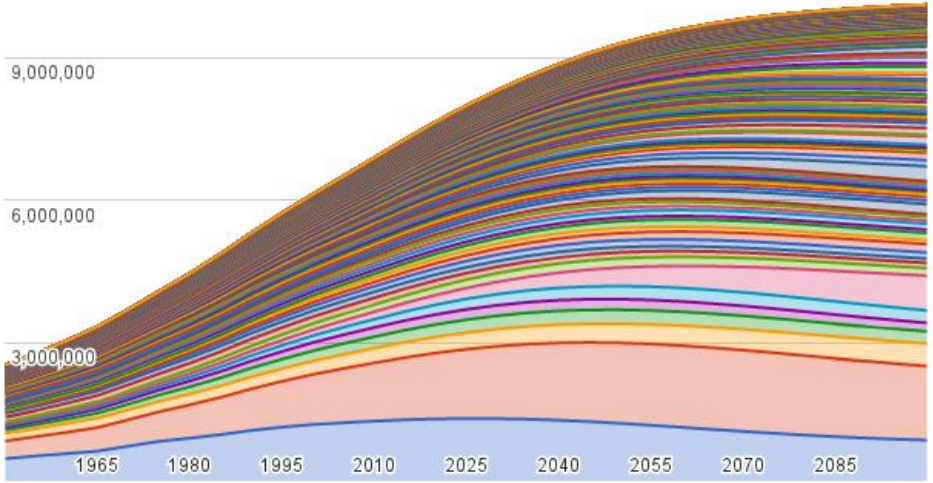
Absolute numbers of foreign-born people and number of those who have moved over the previous 5 years, 1965-2015



The likelihood of moving across borders is declining since the 1990s

Share of recent migrants in global population, 1965-2015, in %





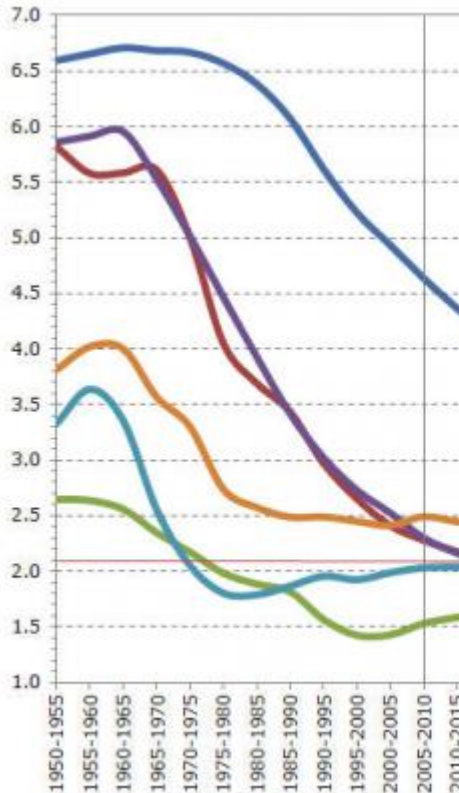
**UN Pop. Div.
US CB
WiC**

Major Global Projections

**Global net
migration
needs to be
zero**

Basic assumption: Global convergence

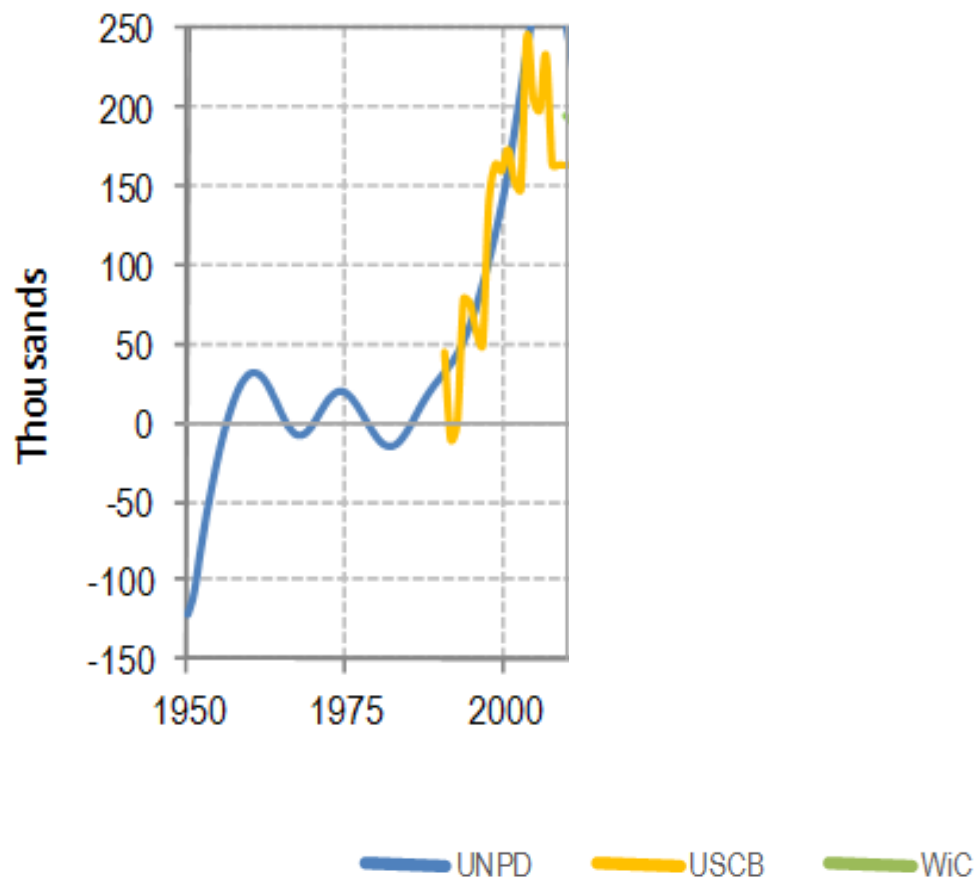
Total fertility (period TFR)/number of children per woman
1950-2015 (actual), 2015-2100 (projection)



The same convergence logic is applied to international migration

United Kingdom

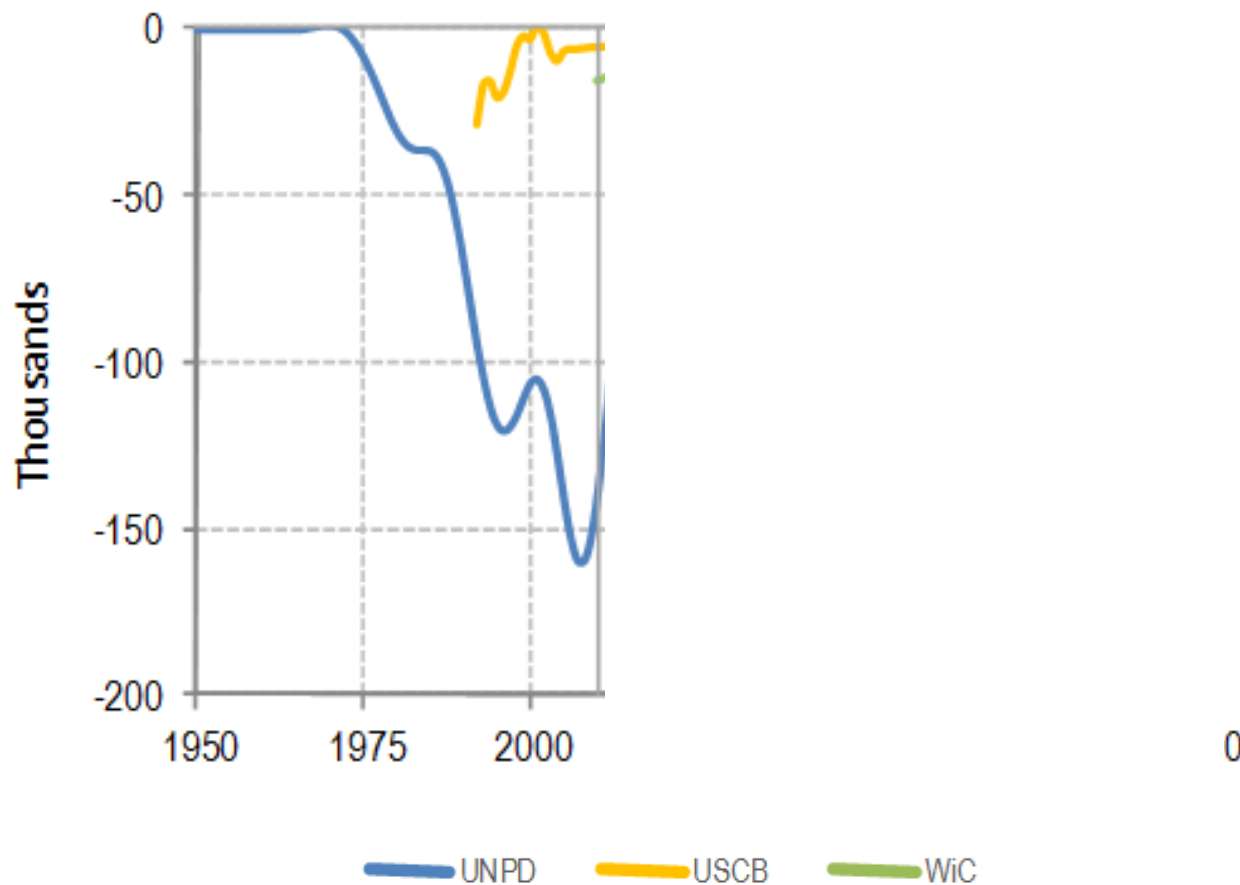
Annual number of international migrants (flow), 1950-2015 (actual), 2015-2100 (projection)



Source: Buettner and Muenz, UNPop Div, USCB, WiC

Romania

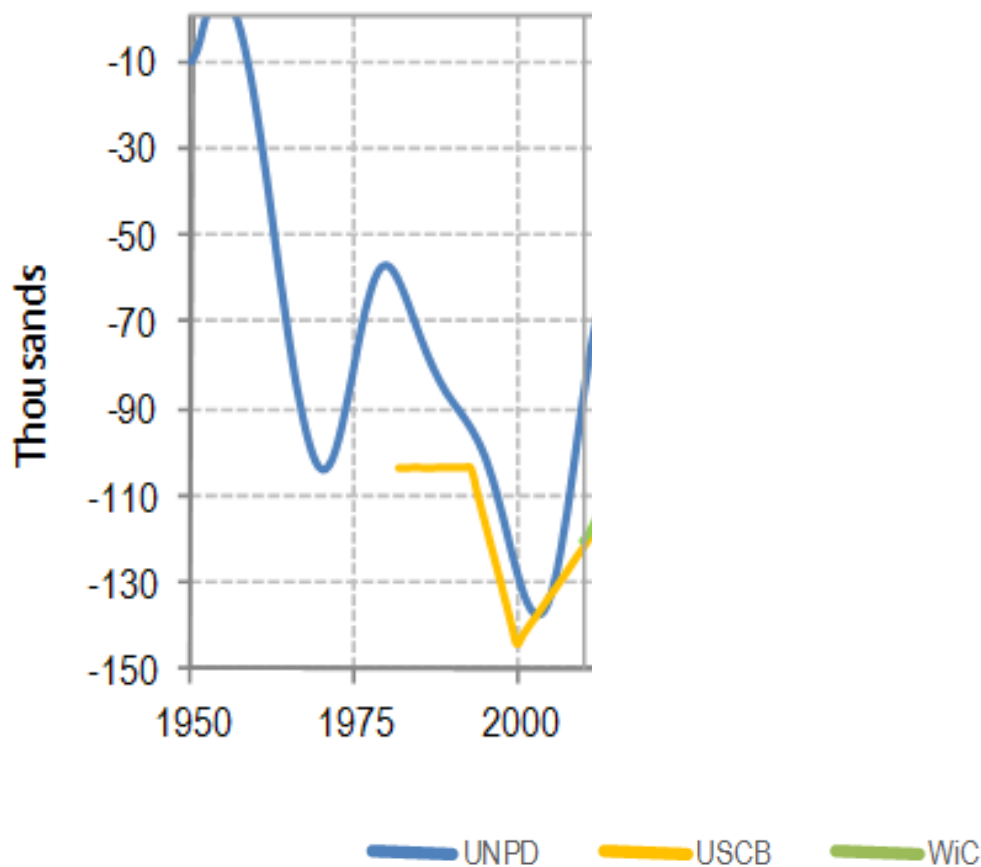
Annual number of international migrants (flow), 1950-2015 (actual), 2015-2100 (projection)



Source: Buettner and Muenz, UNPop Div, USCB, WiC

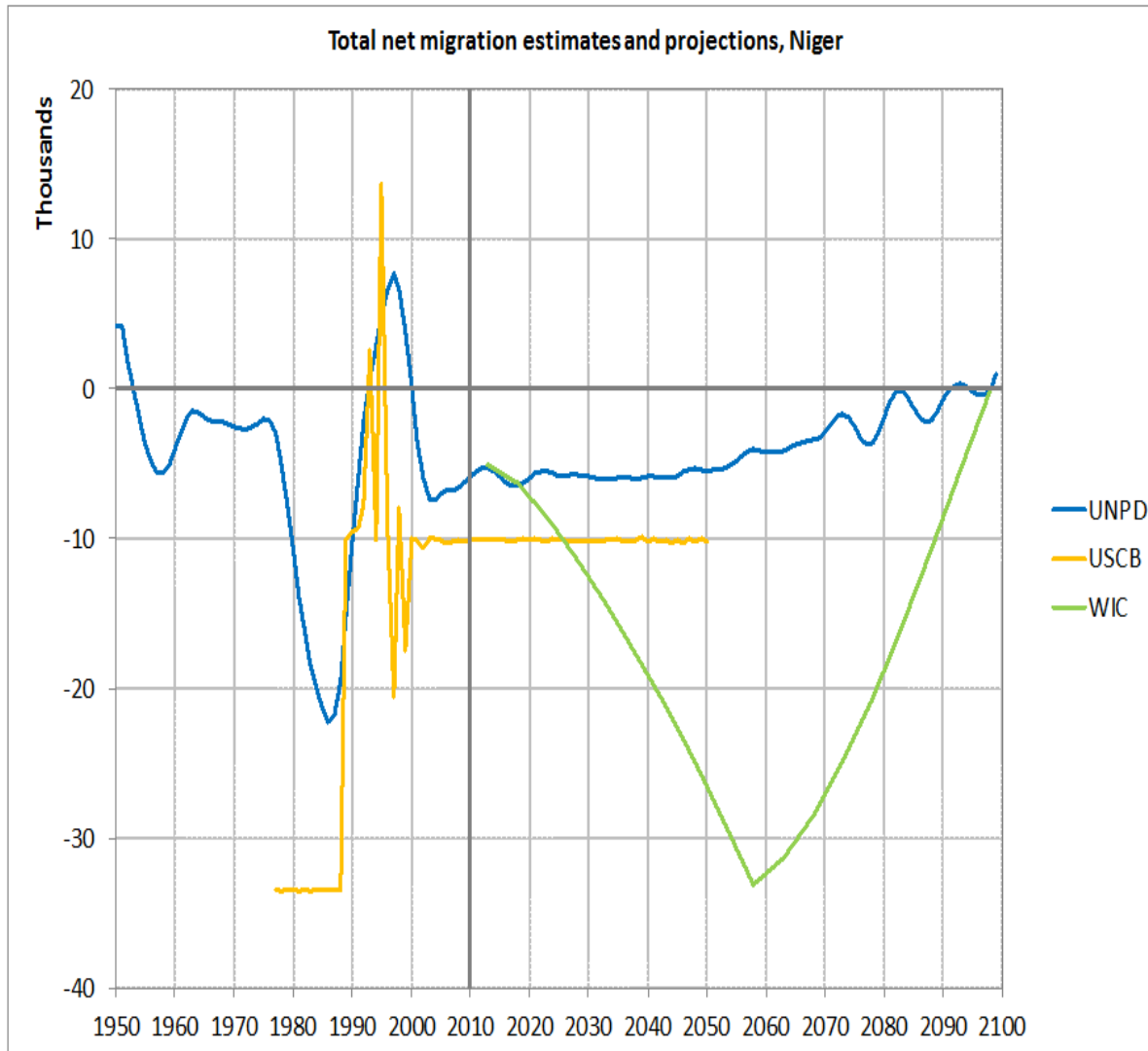
Morocco

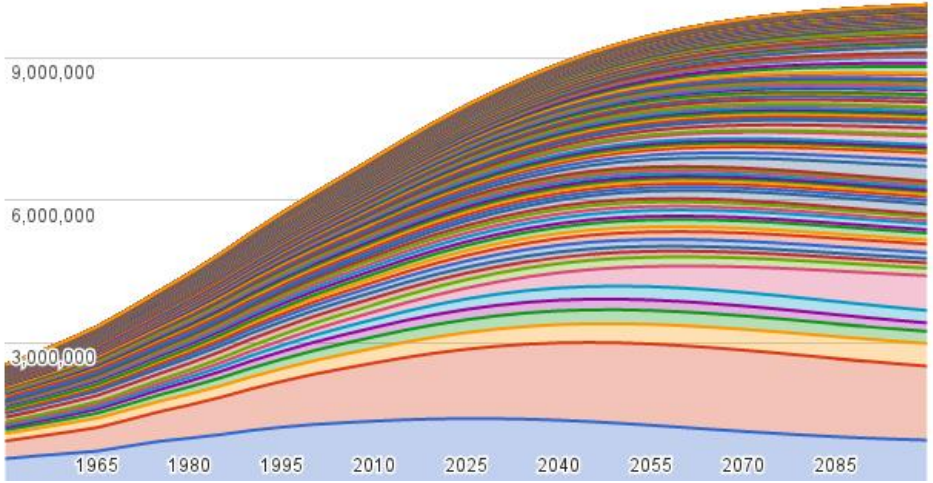
Annual number of international migrants (flow), 1950-2015 (actual), 2015-2100 (projection)



Source: Buettner and Muenz, UNPop Div, USCB, WIC

Migration flows: Uncertain past, uncertain future – Niger

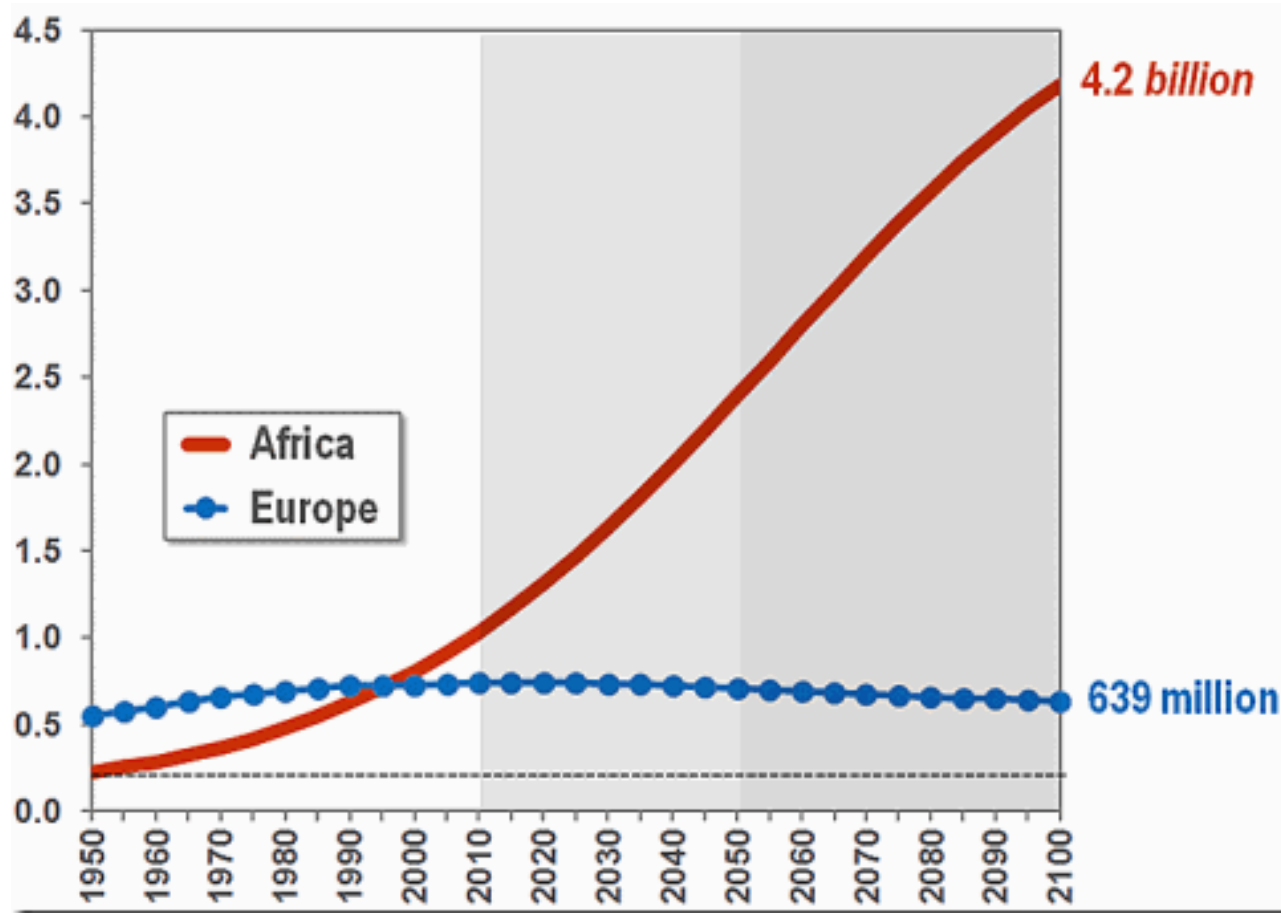


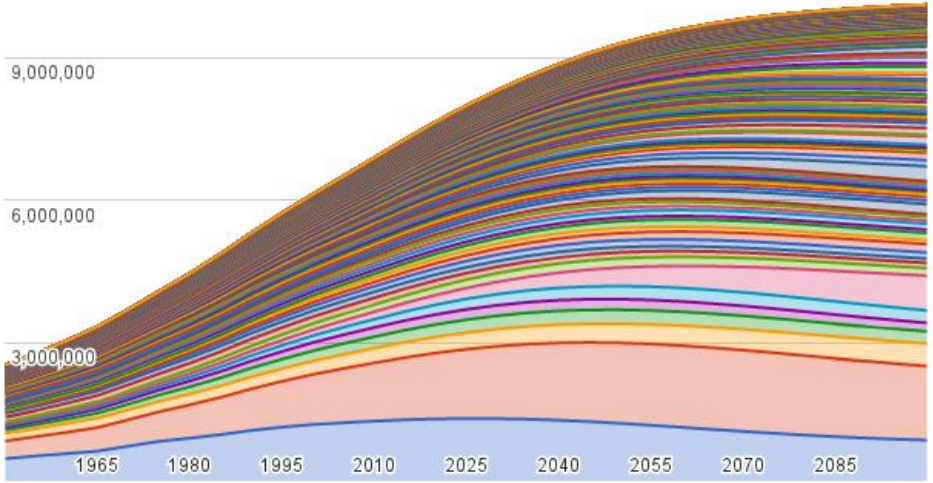


Easy to predict

Africa vs. Europe

Population 1950-2100





Less easy to predict

MIGRATION FOR DEVELOPMENT



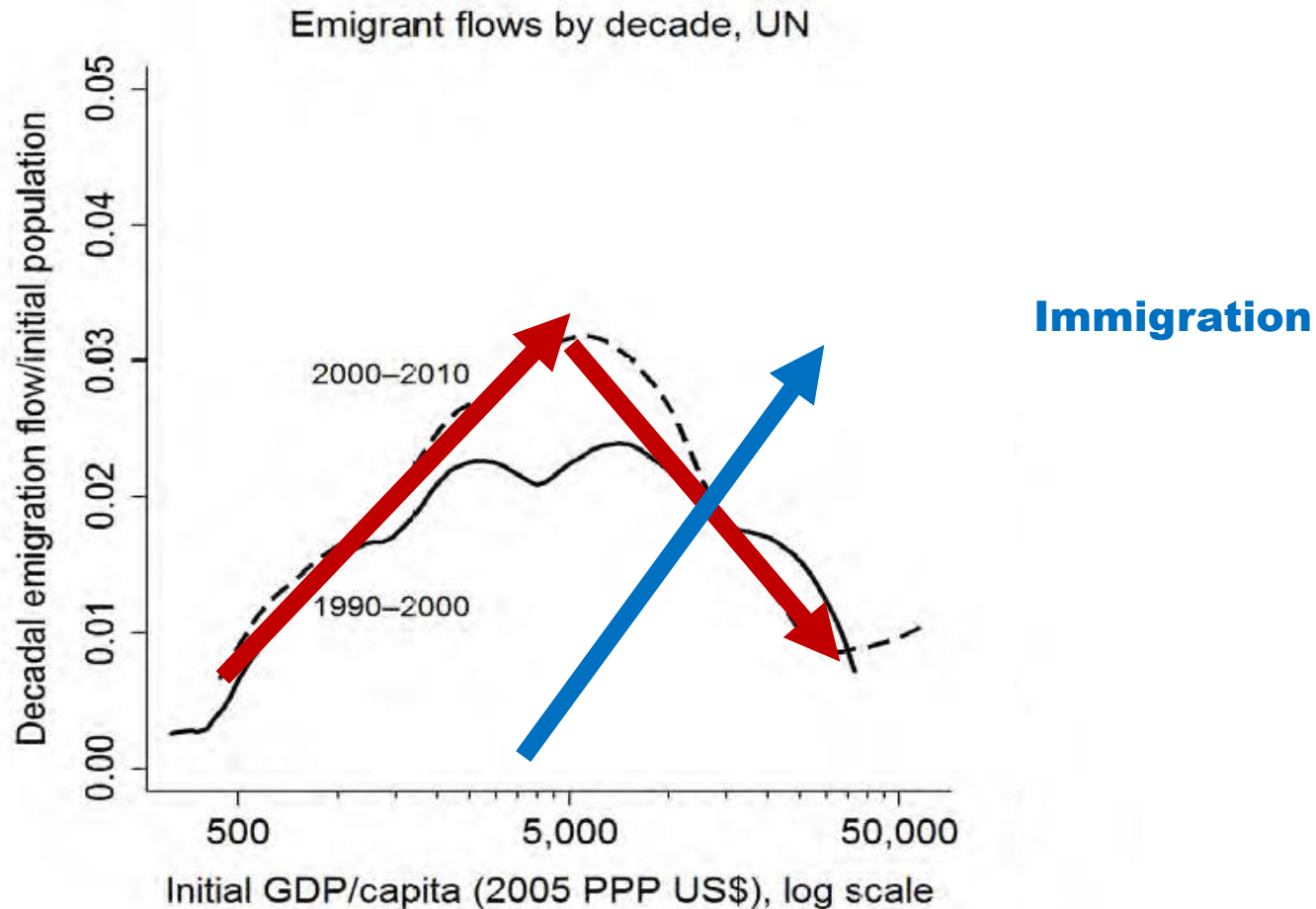
Migration & Development Nexus



Differences to fertility:

- **Relationship between development and migration is not linear, but hump shaped**
- **Global net migration needs to be zero at any given year**

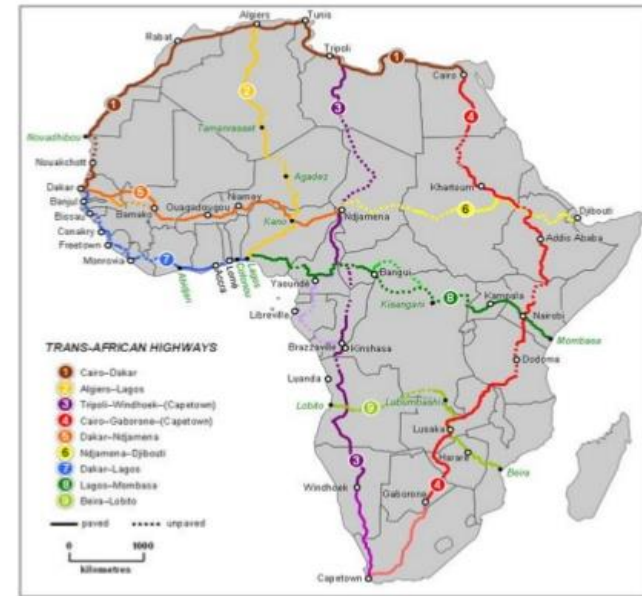
Average emigration rate of sending countries per decade (1960-2000)







AFRICAN CORRIDORS





TRAINING, SEEDS & LIVESTOCK



THRIVING COOPERATIVES



YEAR 1

CONSUMABLE & MARKETABLE FOOD

INCOME

YEAR 2

& REVENUE

No need to emigrate

SCHOOL FEES FOR CHILDREN

YEAR 3

CHILDREN BECOME TEACHERS, DOCTORS & FARMERS

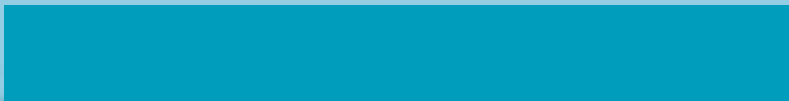
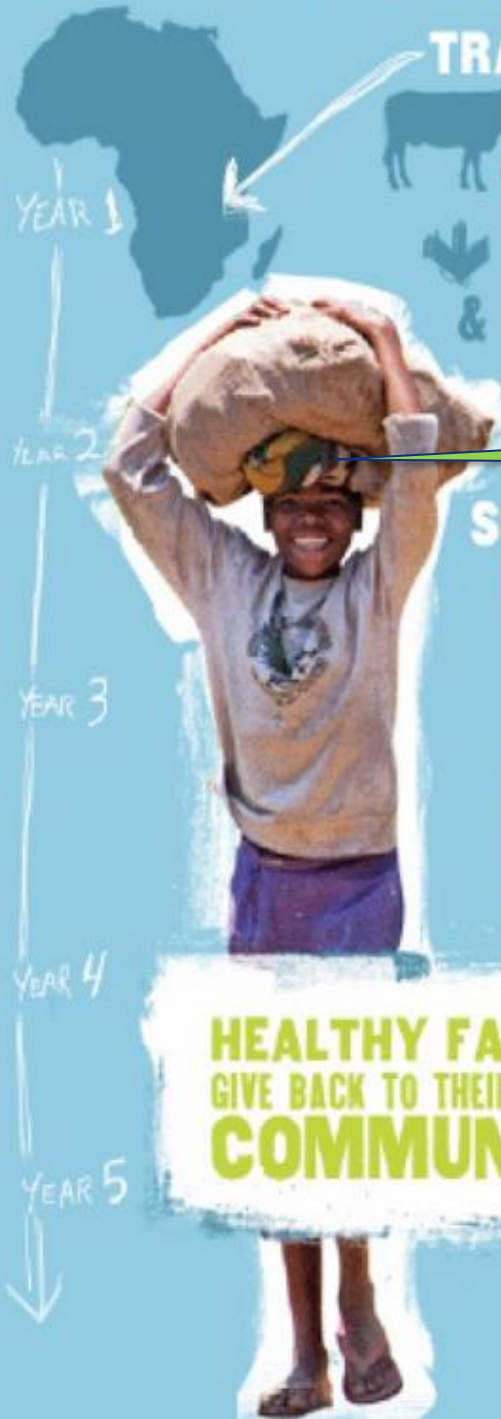
ACCESS TO EDUCATION

YEAR 4

HEALTHY FAMILIES GIVE BACK TO THEIR COMMUNITIES

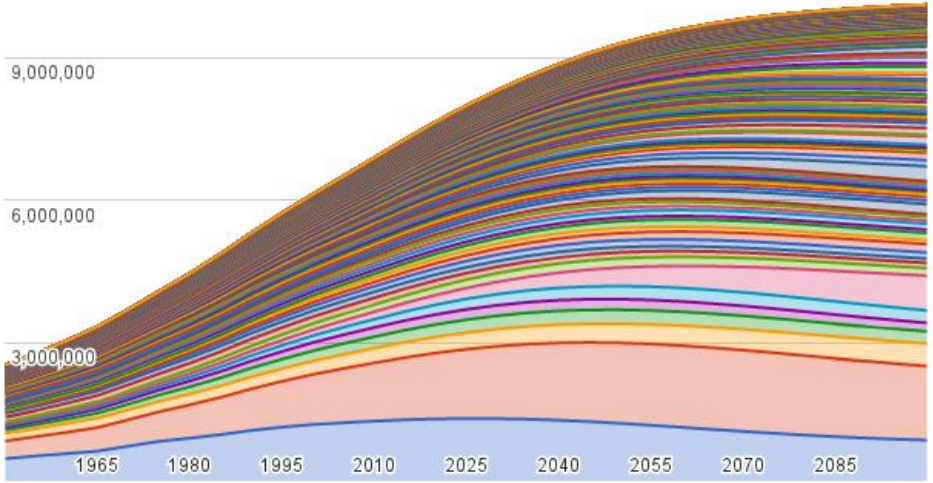
HEALTHY ADULTS RAISE HEALTHY FAMILIES

YEAR 5





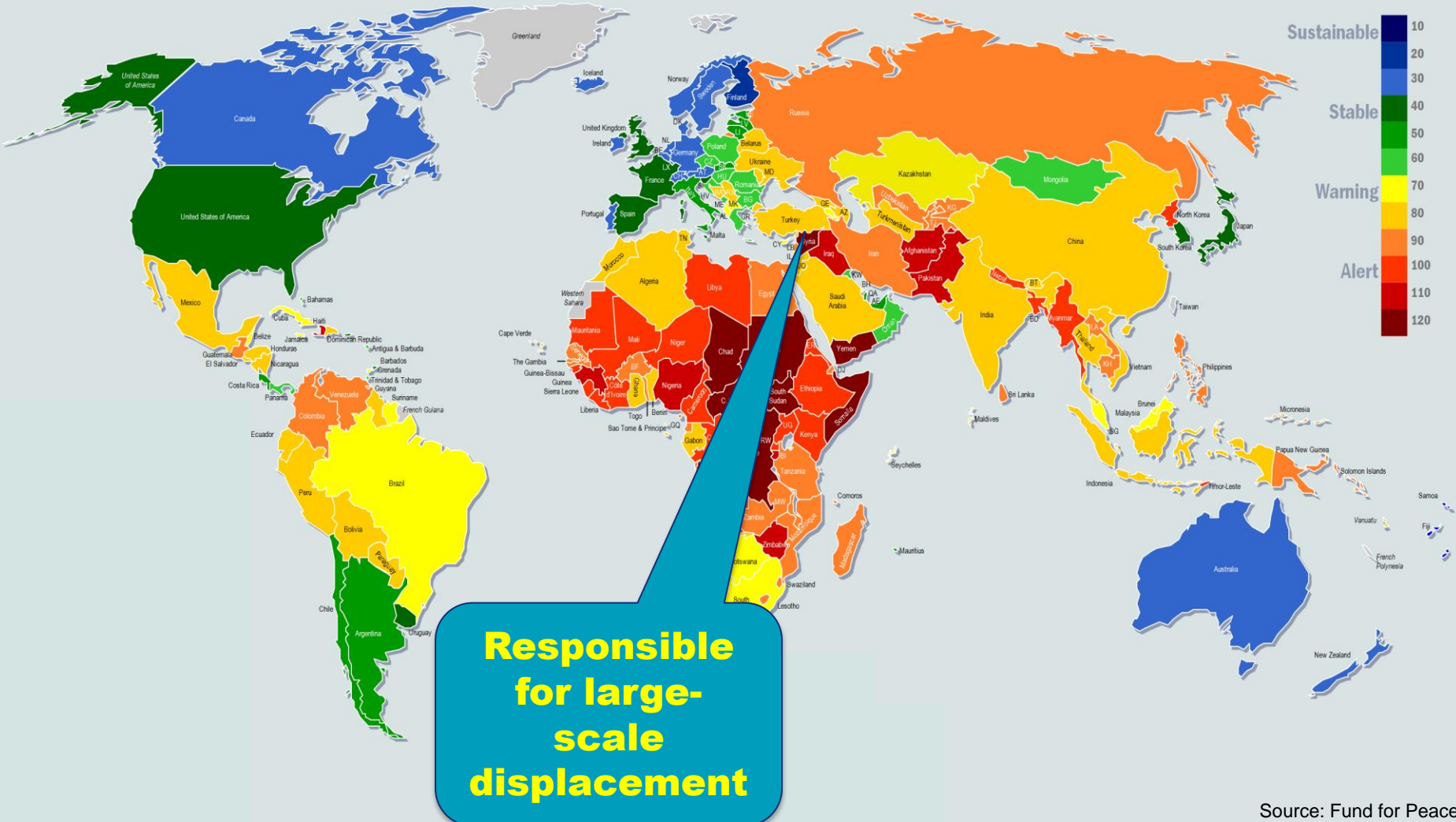
**Is this going to happen
during our life times?**



Hard to predict

Political Instability

Political fragility index 2016



Source: Fund for Peace







European **Political**
Strategy Centre |

Thank you!

rainer.munz@ec.europa.eu

