

Migration traceability

Introduction

IFSM/ OCDE- Paris 2018

dana.diminescu@telecom-paristech.fr
@diminescu

Traces of migration

Fragments of life coming from the sea in Lampedusa

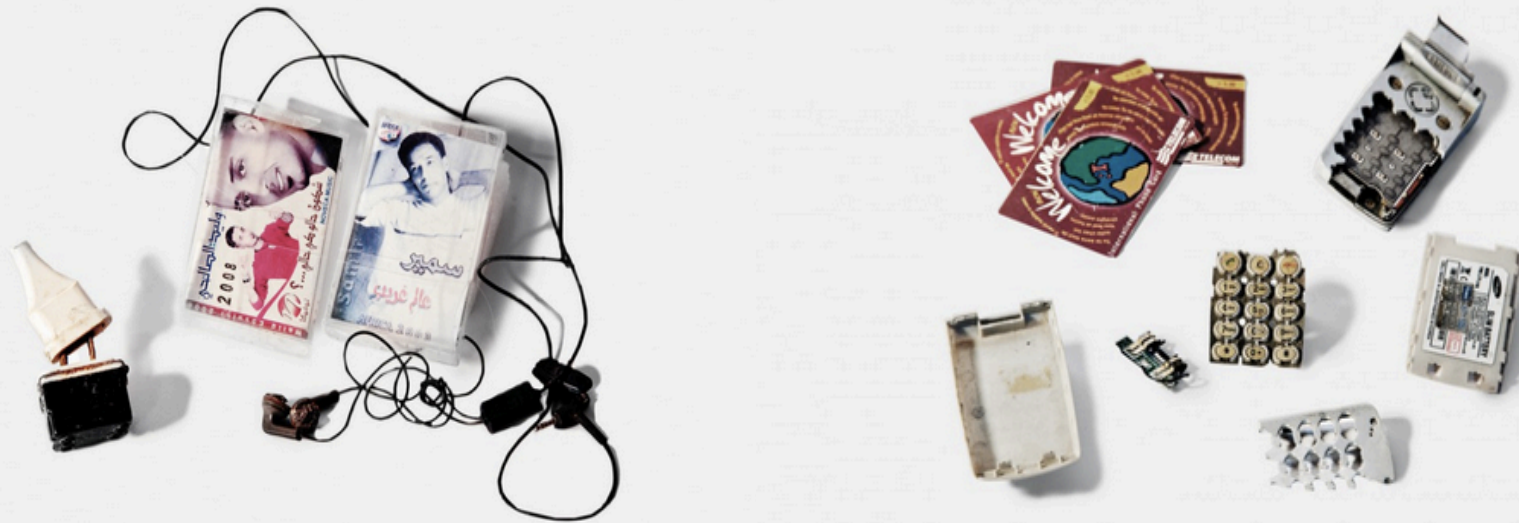
/1/ Material evidences

/2/ Digital traces



photos Marion Badagliacca

The activists of Askavusa have already collected 800 potentially **connected objects**



<http://tempsreel.nouvelobs.com/societe/20150420.OBS7554/adieu-mes-parents-ces-fragments-de-vie-a-la-mer.html>

My habitèle

my material support of my networks of belonging and connections

Smartphone, passport, bank card, navigo,
ID card, badge of access to the office, the
social-security card etc

Digital trace of migration & dispersion



Charles Heller /Lorenzo Pezzani

ITALY SEARCH AND RESCUE AREA

NMM GIUSEPPE GARIBALDI
Italian Navy
Aircraft Carrier 120/130 Nm

NMM BORDINI
Italian Navy
Patrol Boat 37 Nm

MALTA SEARCH AND RESCUE AREA

ESPS MENDEZ NUMEZ
Spanish Navy
Frigate 24 Nm

NMM ETNA
Italian Navy
Auxiliary Vessel 155 Nm

LEGEND:

- "LEFT-TO-DIE" BOAT TRAJECTORY
- MIGRATION ROUTES
- COMMERCIAL VESSEL POSITIONS (AIS)
- MAIN FISHING AREAS
- FRONTX OPERATIONAL AREAS
- SEARCH AND RESCUE ZONES
- AIRSTRIKES
- NATO SURVEILLANCE AREA
- MILITARY SHIPS
- DISTANCE OF KNOWN MILITARY SHIPS
- SATELLITE IMAGERY
- SIGNALS CIRCULATION
- GPS LOCATION
- SIGNALS COVERAGE

0 35 70 140 210 KM

17:59

siamo stati in grado di mappare la traiettoria della loro barca

HD

INTERVIEW WITH DAN HAILE GEBRE, FORENSIC OCEANOGRAPHY, 21.12.2011

Tracce Liquide – Il Caso della “Left-to-Die Boat”

D'autres vidéos de charles heller

Les migrations fin du XX^e siècle



- Samedi 19
- Dimanche 20
- Lundi 21
- Mardi 22
- Mercredi 23
- Jeudi 24
- Vendredi 25
- Samedi 26
- Dimanche 27
- Lundi 28
- Mardi 29
- Mercredi 30
- Jeudi 1^{er} oct.
- ... et depuis ?



Qui sont ils ?

Dimanche 20

Inch Allah tout ira bien

Mön
 La page de l'atlas ne fait pas apparaître les îles grecques et la Turquie. Mimoty, tu peux m'en renvoyer une où on verra Chios et Kos ?
 14 h 15



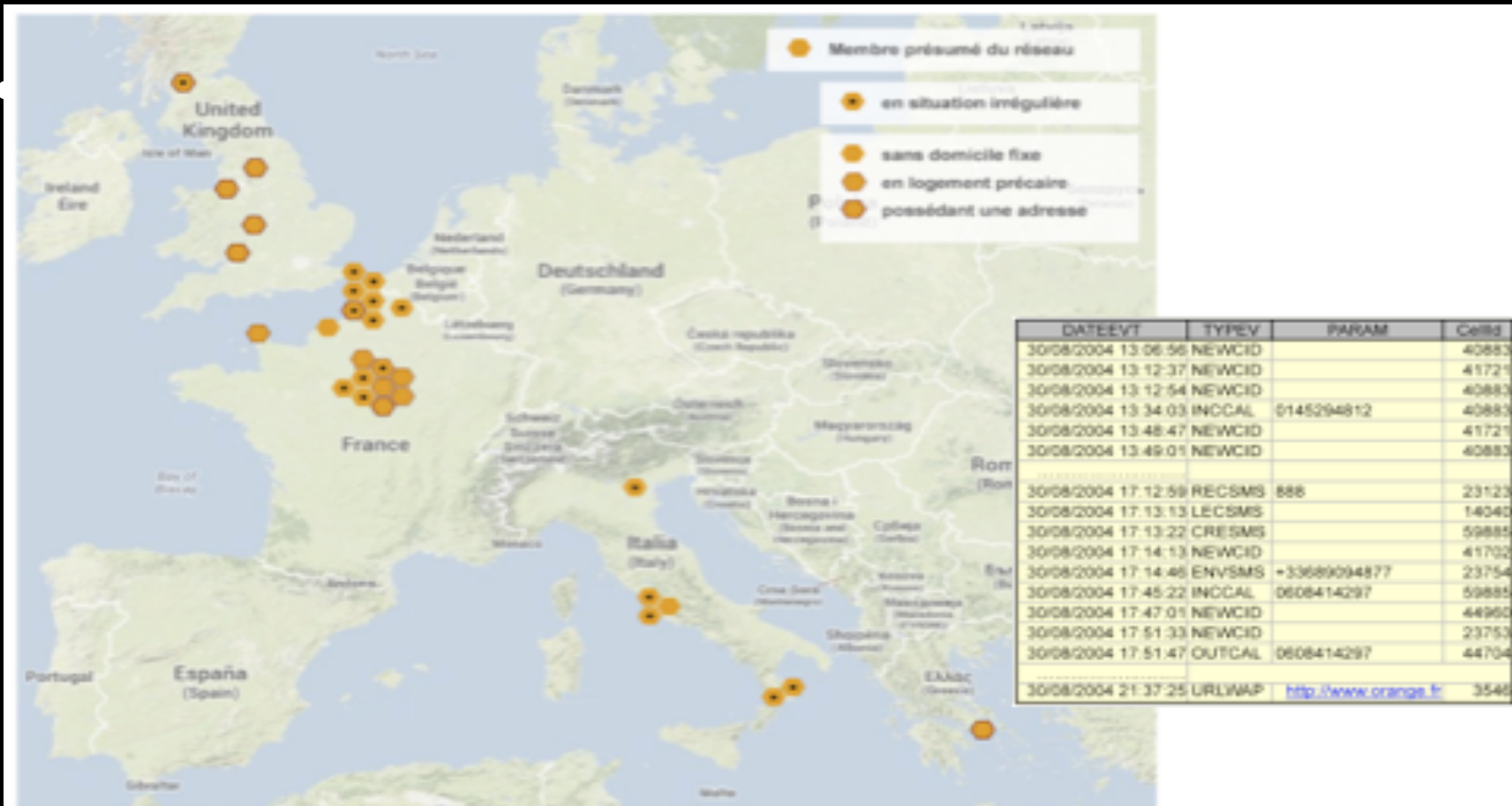
Making of



- Source http://www.lemonde.fr/international/visuel/2015/12/18/dans-le-telephone-d-une-migrante-syrienne_4834834_3210.html#/:

Traces of cell phones and money transfert of a network of smugglers

Source Anouch Knout

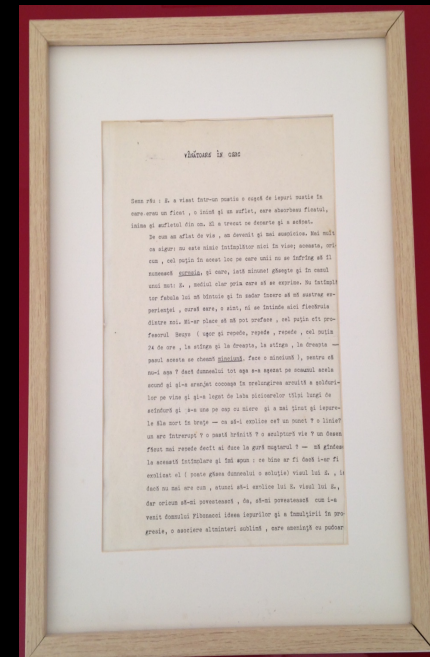


DATE/EVT	TYPE/V	PARAM	Cellid
30/08/2004 13:06:56	NEWCID		40883
30/08/2004 13:12:37	NEWCID		41721
30/08/2004 13:12:54	NEWCID		40883
30/08/2004 13:34:03	INCCAL	0145294812	40883
30/08/2004 13:48:47	NEWCID		41721
30/08/2004 13:49:01	NEWCID		40883
30/08/2004 17:12:59	REC5MS	888	23123
30/08/2004 17:13:13	LEC5MS		14040
30/08/2004 17:13:22	CRE5MS		59885
30/08/2004 17:14:13	NEWCID		41702
30/08/2004 17:14:46	ENV5MS	+33689094877	23754
30/08/2004 17:45:22	INCCAL	0608414297	59885
30/08/2004 17:47:01	NEWCID		44960
30/08/2004 17:51:33	NEWCID		23753
30/08/2004 17:51:47	OUTCAL	0608414297	44704
30/08/2004 21:37:25	URLWAP	http://www.orange.fr	3546

deb	fin	duree (sec)	cellid	X	Y	Ville	NomDuSite	Adresse
30/08/2004 09:09:40	30/08/2004 16:27:29	26269	41721	600680	2425340	PARIS	BARRAULT	55, rue Vergniaud
30/08/2004 18:46:07	30/08/2004 18:46:55	48	44448	598850	2430681	PARIS	HAUSSMANN	89, bd Haussman
30/08/2004 18:46:55	30/08/2004 18:48:46	111	44489	598880	2431008	PARIS	ST AUGUSTIN	38/42, rue du Rocher
30/08/2004 18:48:46	30/08/2004 18:51:34	168	49603	598829	2431764	PARIS	ROME	7, rue Mariotte
30/08/2004 18:51:34	30/08/2004 18:52:55	81	3546	599158	2432186	PARIS	LA FOURCHE	70b, av de clichy
30/08/2004 18:52:55	30/08/2004 18:53:08	13	15988	599158	2431808	PARIS	LA FOURCHE	27, rue Lécuse
30/08/2004 18:53:08	30/08/2004 23:44:46	21098	3546	599158	2432186	PARIS	LA FOURCHE	70b, av de Clichy

Carlo Ginzburg 'evidential paradigm'

A historiographical method inspired by human experience of hunting and divination



- Ginzburg tells us that ***'this knowledge is characterized by the ability to construct from apparently insignificant experimental data a complex reality that could not be experienced directly'***.
- Such a 'conjectural' or 'semiotic' approach is an alternative to Galileian science taken as the quantification and repetition of phenomena, and thus favours an ***effort towards reconstruction of interactions through the interpretation of traces, rather than a description and the search for regularities.***

(Ginzburg, C. (1989), 'Clues. Roots of an evidential paradigm', in *Clues, Myths, and the Historical Method*, Baltimore, MD: Johns Hopkins University Press, pp. 96-125.103, 106,)

- *migration traceability* is the chief organizing principles of my theoretical reflection and “fiction” on “**connected migrant**”

migration traceability is a trajectory of migration, written like a logbook or a diary, the outcome of the digital traces which the migrant leaves at different points en route when using a digitalised environment.

It is the outcome of the correlating of this data recorded by various digitalised sensors. These data are summarised in the form of codes, collected and stocked on various computer storage media.

Migration traceability is a story told by compiling a multitude of contextual sources and flows of personal information which require an ever higher degree of automatic processing

THE POLISH PEASANT
IN EUROPE *and* AMERICA
MONOGRAPH OF AN IMMIGRANT GROUP

By
WILLIAM I. THOMAS
and
FLORIAN ZNANIECKI

VOLUME I
PRIMARY-GROUP ORGANIZATION



182392.

11.7.23

BOSTON
RICHARD G. BADGER
THE GORHAM PRESS

<https://diasporaslab.hypotheses.org/dana-diminescu>
<http://www.e-diasporas.fr>

dana.diminescu@telecom-paristech.fr
@diminescu