

Experiences in the Cooperation between Mekong countries , 26 April 2010.

By Hoang Viet Khang, Deputy Director
General



Scope

- Overview of the GMS Program
- Viet Nam in the GMS



The Greater Mekong Subregion (GMS)

Myanmar

Land area: 677 thou sq km
Population: 54.8 M
GDP per capita: US\$255

Thailand

Land area: 513 thou sq km
Population: 65.3 M
GDP per capita: US\$2,727

The GMS in 2005

Land area: 2.6 M sq km
Population: 316 M
Popn Density: 121/ sq km
GDP per capita: US\$1,102

People's Republic of China

Land area: 633 thou sq km
Population: 93.8 M
GDP per capita: US\$1,032
(figures for Yunnan and Guangxi only)

Viet Nam

Land area: 332 thou sq km
Population: 83.1 M
Popn Density: 250/ sq km
GDP per capita: US\$622

Lao PDR

Land area: 237 thou sq km
Population: 5.6 M
GDP per capita: US\$491

Cambodia

Land area: 181 thou sq km
Population: 13.8 M
GDP per capita: US\$393



The GMS Program

- Started in 1992 by all 6 countries
- Pragmatic, flexible, and results-oriented
- Maximizes synergies with national development efforts
- Promotes mutual trust and goodwill
- Multifaceted role of the ADB



GMS Priority Sectors

- Transport
- Telecoms
- Energy
- Environment
- Tourism
- Trade facilitation
- Investment
- Human resource development
- Agriculture



The GMS Vision: A Mekong subregion that is more integrated, prosperous and harmonious

Connectivity
Competitiveness
Community } **3 Cs**



Improving Competitiveness

- Transport and trade facilitation
- Promotion of the GMS as a single tourist destination
- Regional power interconnection and trade
- Expansion of cross-border agricultural trade
- Building capacity for development management



Cross-Border Transport Facilitation in the GMS

Coverage

- Facilitation of Frontier-Crossing Formalities
- Exchange of Traffic Rights

Components

- Framework Agreement
- Annexes and Protocols (A&P)
- MOUs for Pilot Implementation



CBTA ROAD MAP

1999-2003

CBTA Framework Agreement – Signed & Ratified

Signing of CBTA

LAO – Nov. 1999
 THA – Nov. 1999
 VIE – Nov. 1999
 CAM – Nov. 2001
 PRC – Nov. 2002
 MYA – Sept. 2003

Ratification of CBTA by December 2003

2003-2005

20 Annexes & Protocols (A&P) - Negotiation

Signing of 20 A&P

16 A&P signed
 4 to be signed in 2006

Ratification of 20 A&P by 2005/2008

CAM – None
 PRC – None
 LAO – 8 ratified
 MYA – None
 THA – None
 VIE – 12 ratified

2005-2008

CBTA (Interim) Implementation Arrangements

GMS Transit System

- Road Transit Permit
- Customs Transit Documents for Goods, Vehicles, and Containers
- Establishment of the GMS Transit Guaranteeing System

Initial Implementation at 7 Key Border Crossing Points

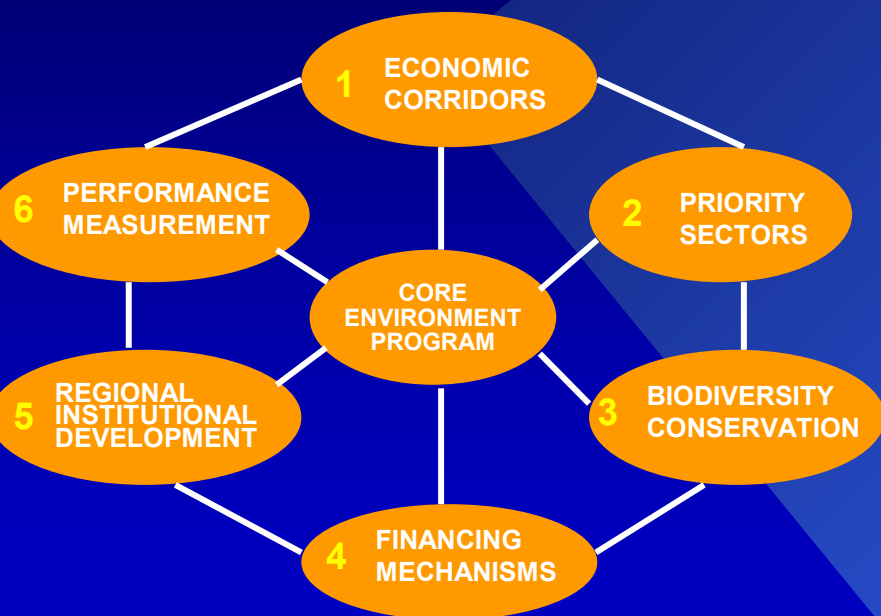
- 4 of the 7 MOUs already signed
 - Lao Bao-Dansavanh commenced
- 3 others will commence by Dec. 2006
- 3 MOUs will be signed by Sept. 2006

2009

CBTA Full Implementation



GMS Core Environment Program

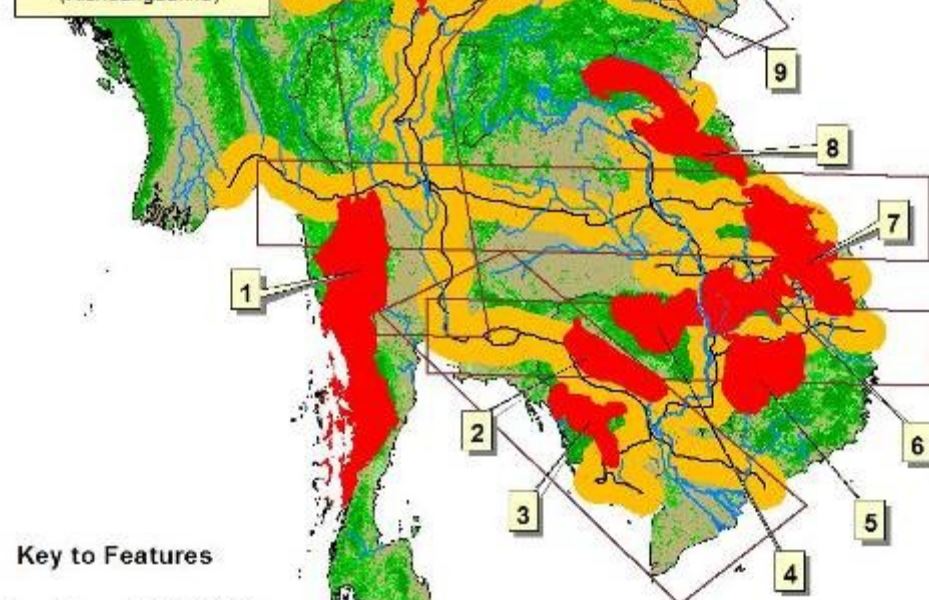


Potential Biodiversity Corridors

0 150 300 Kilometers

Map Source and Design:
UNEP RRCAP &
ADB Consultants

1. Western Forest Complex
2. Tonle Sap Inundation Zone
3. Cardamom & Elephant Mountains
4. Northern Plains Dry Forests
5. Eastern Plains Dry Forests
6. Tri-Border Forests
7. Central Annamites
8. Northern Annamites
9. Mekong Headwaters (Xishuangbanna)



Key to Features

Land Cover (FAO, 2001)

- Closed Forest
- Open & Fragm. Forest
- Other Wooden Land
- Other Land Cover

— Major Rivers

— Major Waterbodies

 GMS Country Boundaries

— Priority Corridors

 Economic Corridors

— Transboundary GMSEC Roads

— 50km Buffer along All Major Roads

GMS Knowledge Products

- Journal of GMS Development Studies
- GMS development matrix
- Mid-term review of the GMS Strategic Framework
- Sector/strategy studies: transport, energy, tourism, agriculture, trade facilitation
- Development study for the North-South Economic Corridor (NSEC)
- GMS webpage and e-newsletter
- Country Brochures on the GMS
- Mekong Region Economic Overview



Viet Nam in the GMS

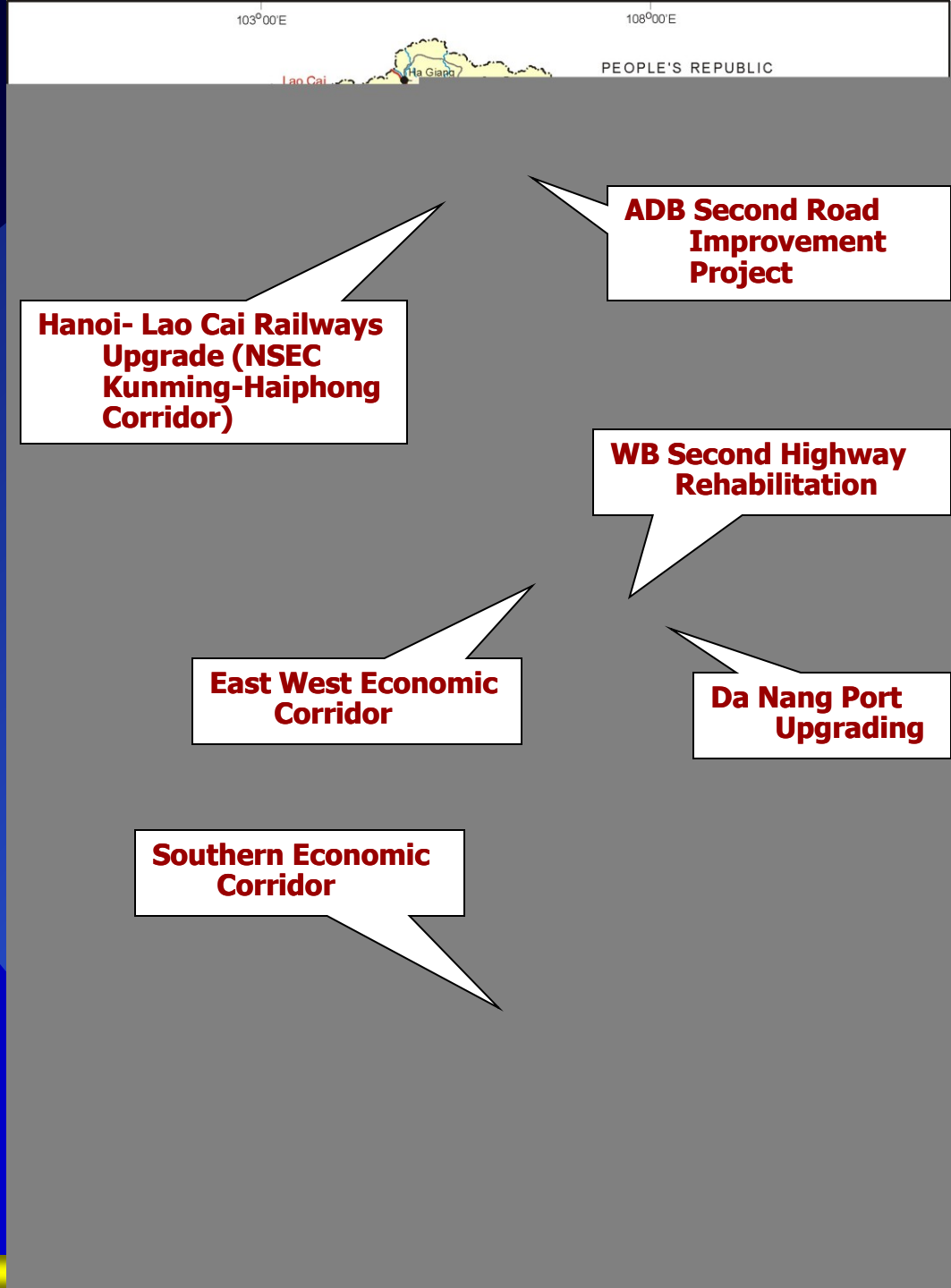


Viet Nam in the GMS

- Greater synergy between SEDP and the GMS Program
- Viet Nam's role in the 3Cs
 - Active in economic corridor development
 - Key player in future power trade
 - GMS core environment program linked to national environment program



Ongoing/ Completed GMS Projects - Transport



**Hanoi- Lao Cai Railways
Upgrade (NSEC
Kunming-Haiphong
Corridor)**

**ADB Second Road
Improvement
Project**

**WB Second Highway
Rehabilitation**

**East West Economic
Corridor**

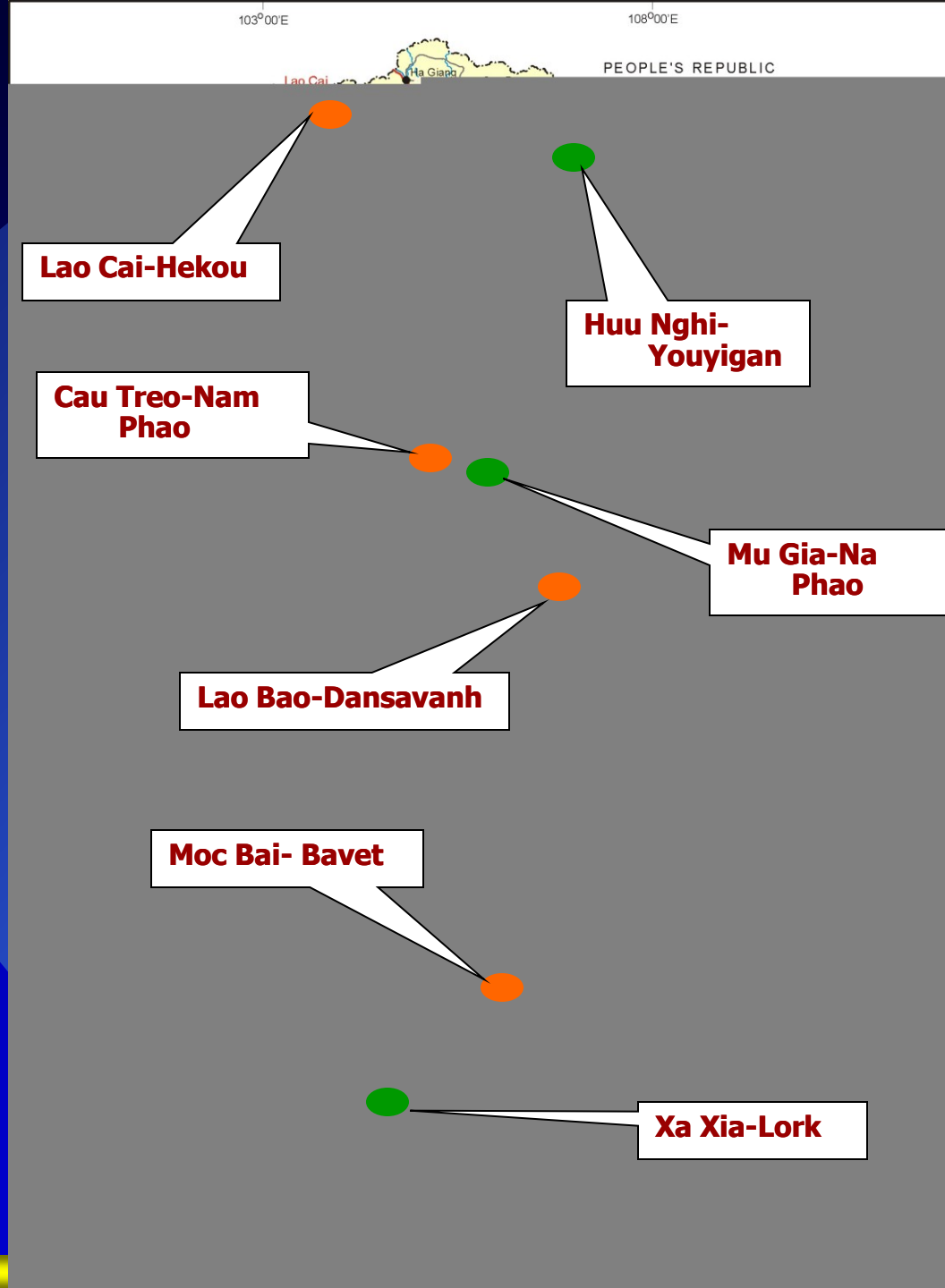
**Da Nang Port
Upgrading**

**Southern Economic
Corridor**

CBTA: Coverage in Viet Nam

Identified CBTA
Border Crossings

Potential New
Border Crossings



Ongoing GMS Projects

- Tourism:

GMS Mekong Tourism Development



- Environment

Biodiversity Conservation Corridor Initiative

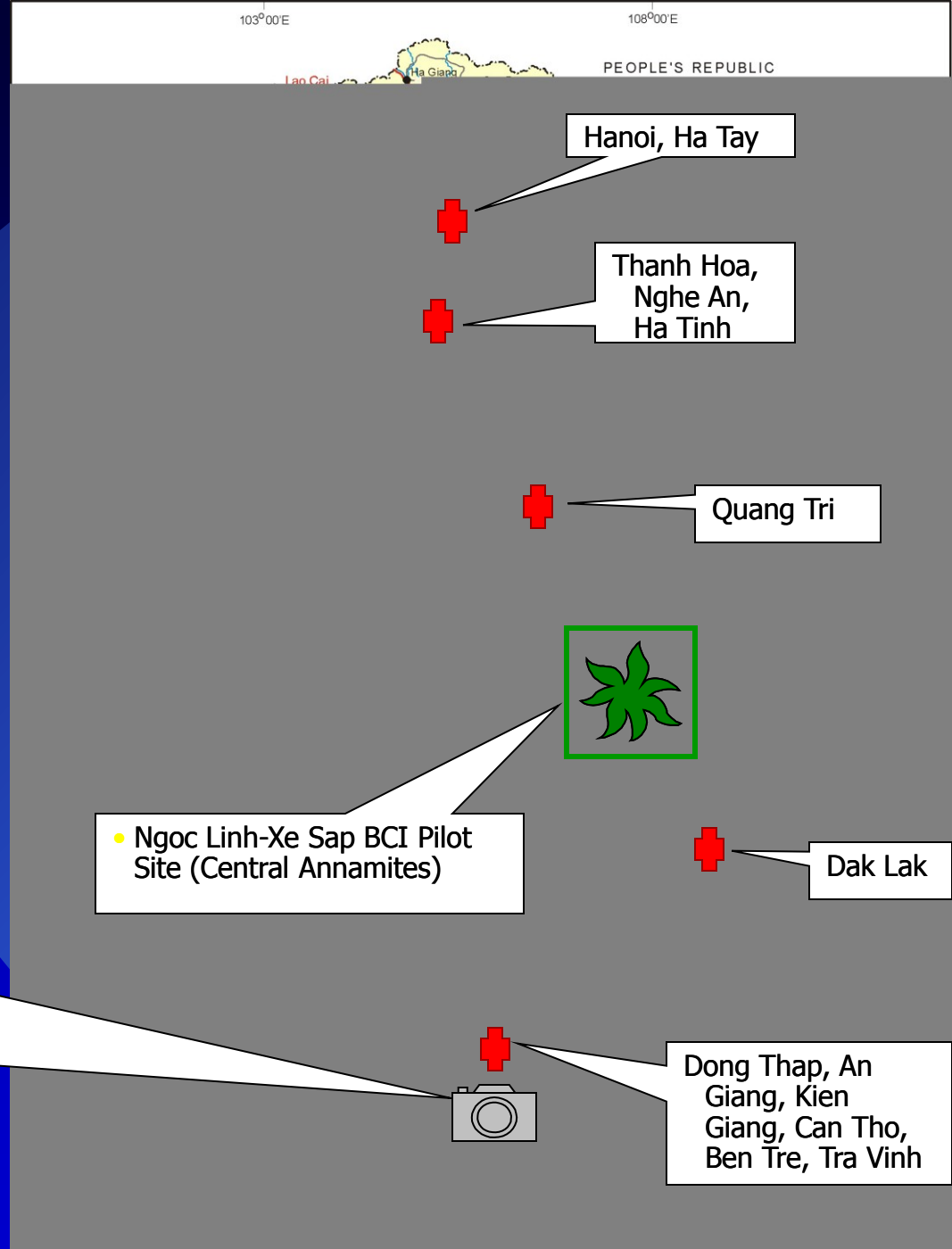


- Health

Regional Communicable Diseases Control

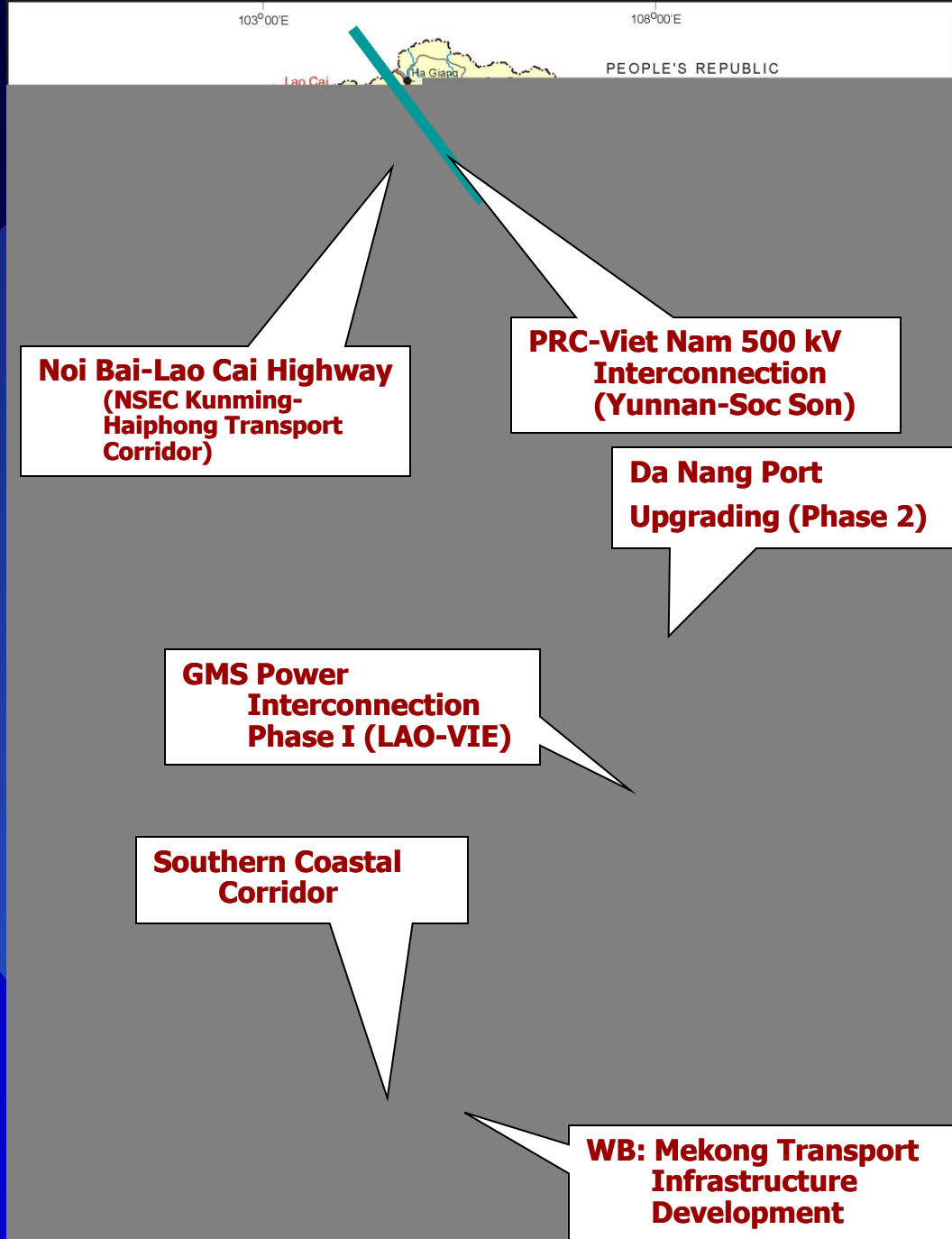


- Sam Mountain Environmental Improvement
- An Giang Tourist River Piers Improvement
- My Tho Tourist River Pier Improvement
- Tien Giang Environmental Improvement



Proposed GMS Projects

- Transport
- Energy

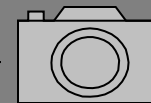


Proposed GMS Projects

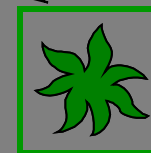
- Tourism
- Environment
- Health



**GMS Sustainable Tourism
Development Project**



**GMS Flood Management
and Mitigation**



**GMS Capacity
Building for
HIV/ AIDS
Prevention**

103°00'E

108°00'E

Lao Cai

Ha Giang

PEOPLE'S REPUBLIC

Experiences from Viet Nam

- Think regionally but invest by country.
- Give priority to regional projects
- Successfully combine domestic and donor resources to invest in large scale projects.



- Emphasise on building transnational corridors
- Focus efforts to implement the annexes and protocols that Viet Nam has signed.
- Involvement of central ministries and local authorities to realise priority projects and programs.
- Strengthen coordination unit to coordinate among central and local agencies.

