

OECD, Paris, 29 November, 2011

National and Regional Traceability and Certification Initiatives Contribution towards the implementation of specific elements of due diligence

Paul Mabolia Yenga (Promines DRC),
Uwe Näher & Bali Barume (BGR),



République Démocratique du Congo



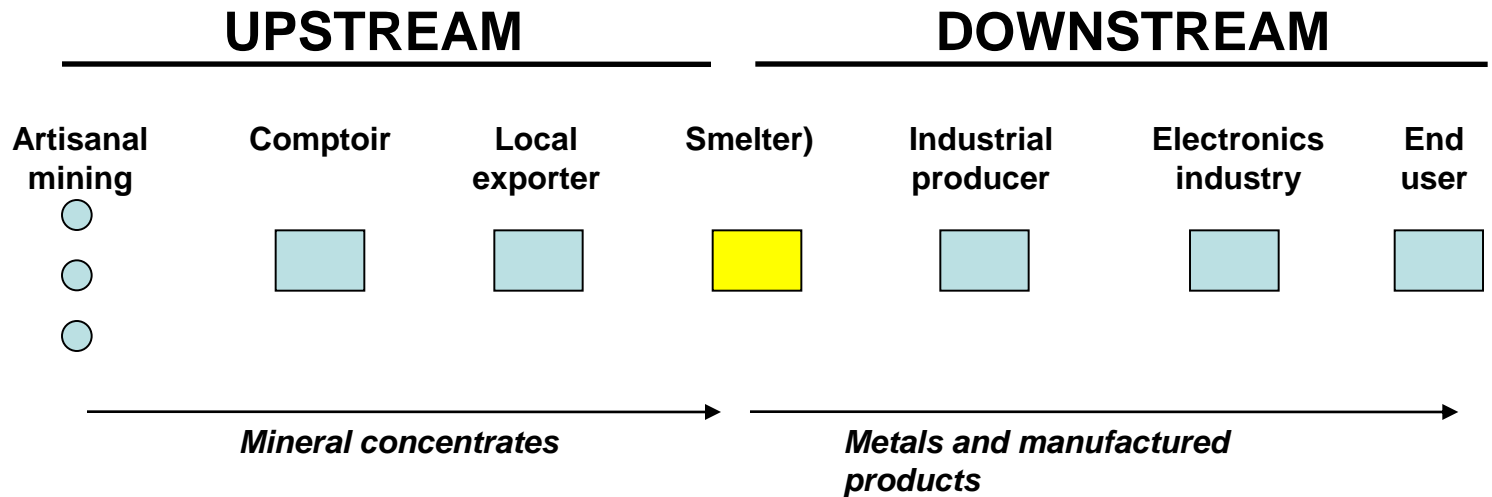
MINISTRE DES MINES



Bundesanstalt für
Geowissenschaften
und Rohstoffe

GEOZENTRUM HANNOVER

Supply Chain Initiatives



Due Diligence & Certification Initiatives (International)

CTC & AFP (BGR)	← ———— * ———— →
ICGLR (BGR & GIZ)	← ———— ← ———— * ————
OECD Due Diligence	← ———— * ———— ← ————

Due Diligence & Traceability Initiatives (Industry)

iTSCi (ITRI)	← ———— →
CFS (EICC/GeSI)	← ———— * ———— →

Certification - DR Congo

Milestones 2011

1. Development of Certification System:

- **Two Manuals produced (3T & Au), included in DRC Legislation since June 2011 per Ministerial Decree;**

2. Implementation:

- **First Baseline Audit completed in September**

3. Institutional Capacity Building:

ongoing; Seminars on certification, traceability & legislation, Spectrometer use etc

4. Stakeholder Dialogue:

Harmonization WS in Kinshasa, Cooperation with EITI, Roundtable Mukungwe



République Démocratique du Congo



MINISTRE DES MINES



Bundesanstalt für
Geowissenschaften
und Rohstoffe

GEOZENTRUM HANNOVER



Bundesanstalt für
Geowissenschaften
und Rohstoffe

GEOZENTRUM HANNOVER

Centre de Negoce Project - DR Congo

Joint Mine Qualification Missions in North & South Kivu

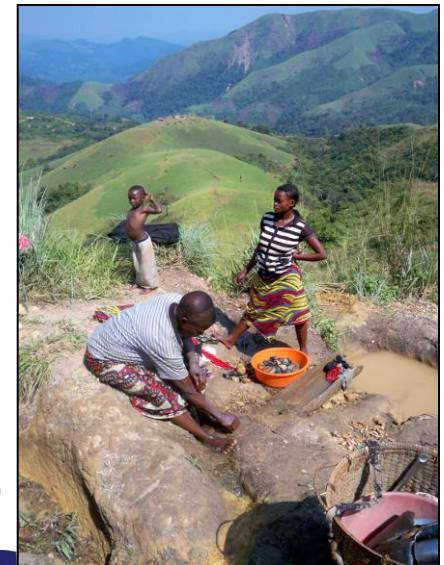


- Participation of Government, Industry, Civil Society
- Inspection of 35 sites in North and South Kivu (CdN Mugogo & Rubaya)

Standards and Criteria for Mine Site Qualification:

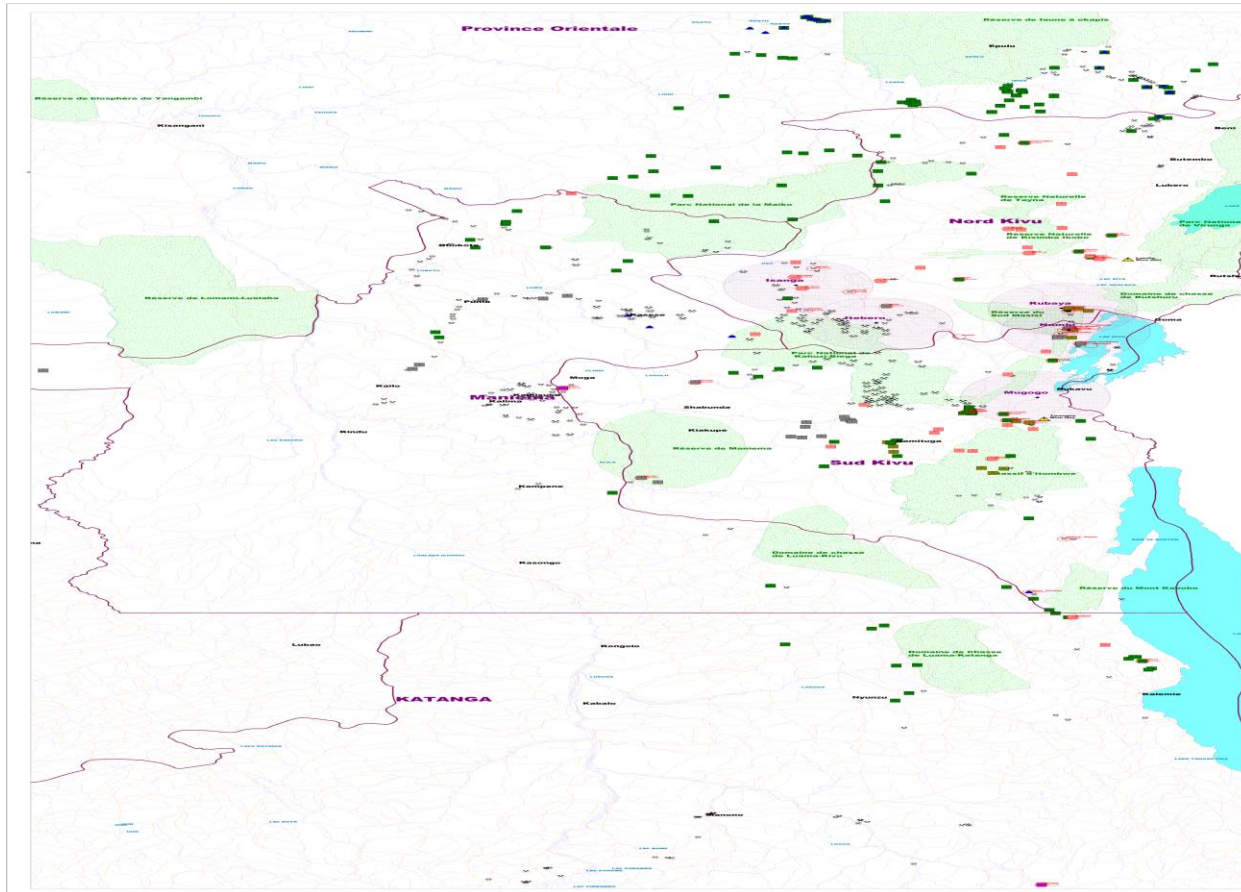
In accordance to OECD/UN Due Diligence and the ICGLR RINR

- Check for Presence or Involvement of Armed Groups or Congolese Military in Mine Operations (Conflict free)
- Check for Presence of Children in Mine Area (No Child Labour)
- Examination of Situation of Women in Mine Area (Gender Issues)



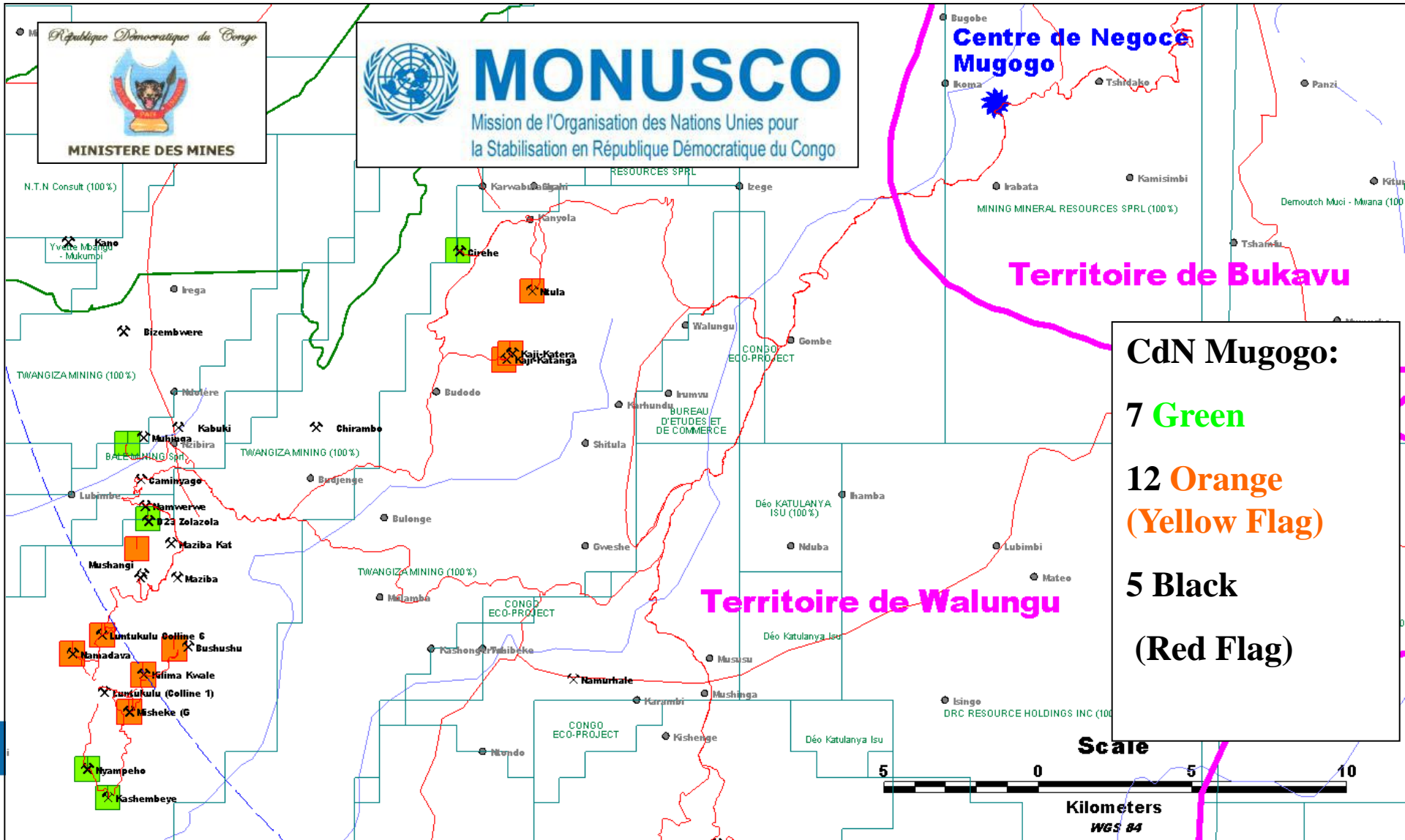
Bundesanstalt für
Geowissenschaften
und Rohstoffe

GEOZENTRUM HANNOVER



Centre de Negoce Project - DR Congo

Joint Mine Qualifying Missions in Nord and Sud Kivu



Mine Site Qualification - DR Congo

Main Findings:

According to the ToR's list of qualified mines to be published by Nat Min based on result of Joint Mission.

- 18 green flag,
- 12 yellow flag
- 5 red flag

Results are to be used by upstream companies for their risk assessment under OECD guidance according to Ministerial Note in DRC



Bundesanstalt für
Geowissenschaften
und Rohstoffe

GEOZENTRUM HANNOVER

Mine Site Qualification - DR Congo

Lessons Learned:

- Good, quick and efficient way to assess mine sites
- High Credibility of team through participation of all stakeholders (Govt., Civil Society, Industry, Monusco, ICGLR and ID (BGR, USAID));
- Security and logistics provided by MONUSCO, technical expertise by BGR
- Opportunities for mine site sampling (AFP), mapping and inventory



Bundesanstalt für
Geowissenschaften
und Rohstoffe

GEOZENTRUM HANNOVER

Mine Site Qualification - DR Congo

Recommendations:

- ToR need to be updated to allow general mine site qualification joint missions;
- Validation and mapping to include also transportation routes;
- Expansion of qualification missions needed (Pr. Orientale, Maniema & Katanga);
- Support of MONUSCO needed to secure access to mines;
- More financing and support from industry and donors is needed (last mission was funded by MONUSCO, BGR and USAID);
- Validation and qualification does actually not address the issue of

legalization.

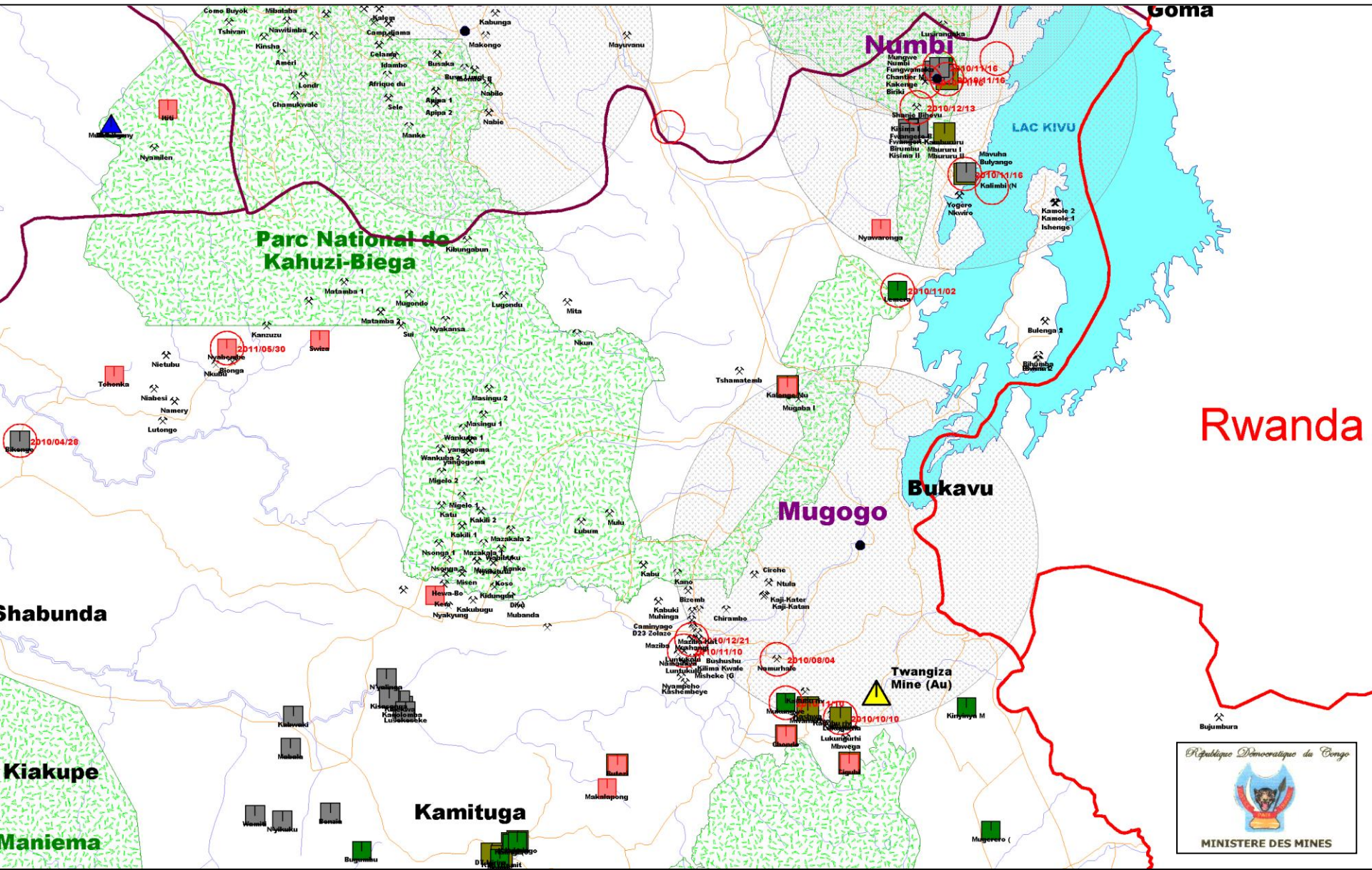


Bundesanstalt für
Geowissenschaften
und Rohstoffe

GEOZENTRUM HANNOVER

Certification - DR Congo

Support of Mapping of the Militarized Mining Areas:



Certification - DR Congo

Mapping of the Militarized Mining Areas:

918 sites identified:

FARDC (155)

FARDC/CNDP (45)

PNC (34)

FDLR (104)

Mayi Mayi (56)

APCLS (7)

ADF (2)

FRF (2)

482 sites not mentioned

LEGENDE:

FARDC (Forces Armees de la RD Congo)



FARDC (ex CNDP) Forces Armees qui ont ete integre dans la FARDC



Mayi Mayi (Groupes Armes Rebelles Congolais)



PNC (Police Nationale de la RD Congo)



FDLR (Forces Democratiques de la Liberation de Rwanda, Interahamwe)



APCLS (Alliance des Patriotes pour le Congo libre et souverain)



Mines non occupees, elles sont sous la controle de L'Administration des Mines



Mines Industrielles



Activitees Militaire et Date: Durant la periode de 06/2010 - 02/2011 incidents mititaires intervenu durant cette periode enregistre par le MONUSCO



Centres de Negoce: Ce sont le places de vente formalise ainsi que toutes les sites miniers situes dans du rayon de 30 km.



Frontieres Provincielles



Routes



Bundesanstalt für
Geowissenschaften
und Rohstoffe

GEOZENTRUM HANNOVER



Thank You

